

For Research Use Only

S100A13 Polyclonal antibody

Catalog Number: 14987-1-AP

Featured Product

3 Publications



Basic Information

Catalog Number:

14987-1-AP

Size:

150ul, Concentration: 500 ug/ml by Nanodrop and 287 ug/ml by Bradford method using BSA as the standard;

Source:

Rabbit

Isotype:

IgG

Immunogen Catalog Number:

AG6971

GenBank Accession Number:

BC000632

GeneID (NCBI):

6284

UNIPROT ID:

Q99584

Full Name:

S100 calcium binding protein A13

Calculated MW:

11 kDa

Observed MW:

11 kDa

Purification Method:

Antigen affinity purification

Recommended Dilutions:

WB 1:200-1:1000

IHC 1:20-1:200

IF/ICC 1:50-1:500

Applications

Tested Applications:

WB, IHC, IF/ICC, ELISA

Cited Applications:

WB, IHC

Species Specificity:

human, mouse, rat

Cited Species:

human

Note-IHC: suggested antigen retrieval with TE buffer pH 9.0; (*) Alternatively, antigen retrieval may be performed with citrate buffer pH 6.0

Positive Controls:

WB : MCF-7 cells,

IHC : human thyroid cancer tissue, human brain tissue, human heart tissue, human kidney tissue, human lung tissue, human ovary tissue, human placenta tissue, human skin tissue, human spleen tissue, human testis tissue, human thyroid tissue

IF/ICC : MCF-7 cells,

Notable Publications

Author	Pubmed ID	Journal	Application
Ruicen Li	34358353	J Oral Pathol Med	IHC, WB
Mingjun Sun	37995868	Gastroenterology	IHC
Wanpeng Wang	36793711	Front Immunol	WB, IHC

Storage

Storage:

Store at -20°C. Stable for one year after shipment.

Storage Buffer:

PBS with 0.02% sodium azide and 50% glycerol pH 7.3.

Aliquoting is unnecessary for -20°C storage

*** 20ul sizes contain 0.1% BSA

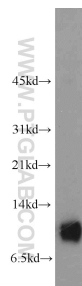
For technical support and original validation data for this product please contact:

T: 1 (888) 4PTGLAB (1-888-478-4522) (toll free in USA), or 1(312) 455-8498 (outside USA)

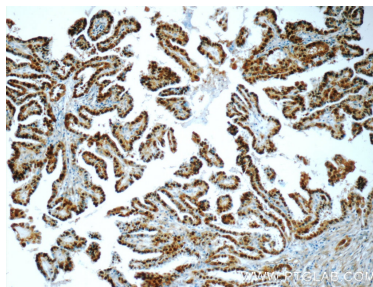
E: proteintech@ptglab.com
W: ptglab.com

This product is exclusively available under Proteintech Group brand and is not available to purchase from any other manufacturer.

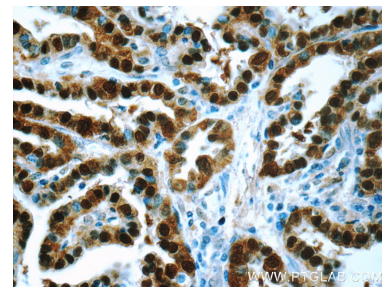
Selected Validation Data



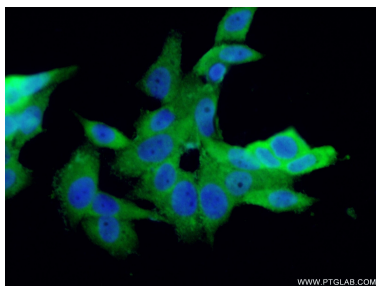
MCF-7 cells were subjected to SDS PAGE followed by western blot with 14987-1-AP (S100A13 Antibody) at dilution of 1:300 incubated at room temperature for 1.5 hours.



Immunohistochemical analysis of paraffin-embedded human thyroid cancer tissue slide using 14987-1-AP (S100A13 Antibody) at dilution of 1:50 (under 10x lens).



Immunohistochemical analysis of paraffin-embedded human thyroid cancer tissue slide using 14987-1-AP (S100A13 Antibody) at dilution of 1:50 (under 40x lens).



Immunofluorescent analysis of (-20°C Ethanol) fixed MCF-7 cells using 14987-1-AP (S100A13 antibody) at dilution of 1:50 and Alexa Fluor 488-conjugated Goat Anti-Rabbit IgG(H+L).