

For Research Use Only

# RPL14 Polyclonal antibody

Catalog Number: 14991-1-AP

4 Publications



## Basic Information

### Catalog Number:

14991-1-AP

### Size:

150ul, Concentration: 450 ug/ml by Nanodrop;

### Source:

Rabbit

### Isotype:

IgG

### Immunogen Catalog Number:

AG6976

### GenBank Accession Number:

BC000606

### GeneID (NCBI):

9045

### UNIPROT ID:

P50914

### Full Name:

ribosomal protein L14

### Calculated MW:

23 kDa

### Observed MW:

25-30 kDa

### Purification Method:

Antigen affinity purification

### Recommended Dilutions:

WB 1:5000-1:50000

IP 0.5-4.0 ug for 1.0-3.0 mg of total protein lysate

IHC 1:20-1:200

IF/ICC 1:20-1:200

## Applications

### Tested Applications:

WB, IHC, IF/ICC, IP, ELISA

### Cited Applications:

WB, ColP, IF

### Species Specificity:

human, mouse, rat

### Cited Species:

human, mouse

**Note-IHC: suggested antigen retrieval with TE buffer pH 9.0; (\*) Alternatively, antigen retrieval may be performed with citrate buffer pH 6.0**

### Positive Controls:

**WB** : HEK-293 cells, HepG2 cells, HeLa cells, MCF-7 cells, mouse liver tissue, rat liver tissue

**IP** : mouse liver tissue,

**IHC** : human colon cancer tissue,

**IF/ICC** : HepG2 cells,

## Background Information

RPL14 is a component of the large ribosomal subunit. The protein belongs to the L14E family of ribosomal proteins. It contains a basic region-leucine zipper (bZIP)-like domain.

## Notable Publications

Author	Pubmed ID	Journal	Application
Kai Ma	35637200	Cell Discov	WB,IF
Xiaochen Gai	34980897	Cell Res	IF
Duo Wu	37789001	Cell Discov	ColP,WB

## Storage

### Storage:

Store at -20°C. Stable for one year after shipment.

### Storage Buffer:

PBS with 0.02% sodium azide and 50% glycerol pH 7.3.

Aliquoting is unnecessary for -20°C storage

\*\*\* 20ul sizes contain 0.1% BSA

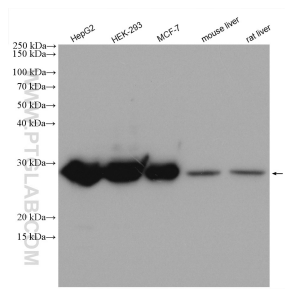
For technical support and original validation data for this product please contact:

T: 1 (888) 4PTGLAB (1-888-478-4522) (toll free in USA), or 1(312) 455-8498 (outside USA)

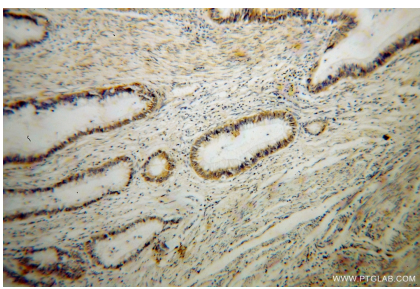
E: [proteintech@ptglab.com](mailto:proteintech@ptglab.com)  
W: [ptglab.com](http://ptglab.com)

This product is exclusively available under Proteintech Group brand and is not available to purchase from any other manufacturer.

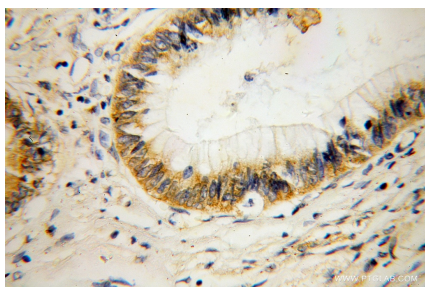
Selected Validation Data



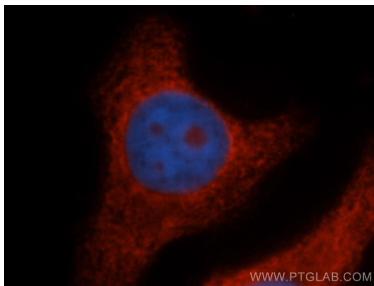
Various lysates were subjected to SDS PAGE followed by western blot with 14991-1-AP (RPL14 antibody) at dilution of 1:3000 incubated at room temperature for 1.5 hours.



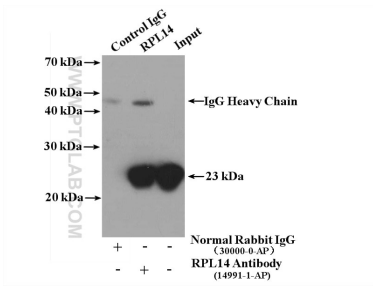
Immunohistochemical analysis of paraffin-embedded human colon cancer using 14991-1-AP (RPL14 antibody) at dilution of 1:100 (under 10x lens).



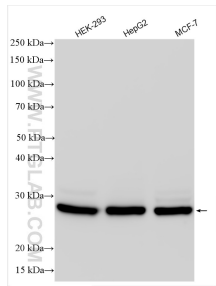
Immunohistochemical analysis of paraffin-embedded human colon cancer using 14991-1-AP (RPL14 antibody) at dilution of 1:100 (under 40x lens).



Immunofluorescent analysis of HepG2 cells, using RPL14 antibody 14991-1-AP at 1:50 dilution and Rhodamine-labeled goat anti-rabbit IgG (red). Blue pseudocolor = DAPI (fluorescent DNA dye).



IP result of anti-RPL14 (IP:14991-1-AP, 4ug; Detection:14991-1-AP 1:1000) with mouse liver tissue lysate 6800ug.



Various lysates were subjected to SDS PAGE followed by western blot with 14991-1-AP (RPL14 antibody) at dilution of 1:10000 incubated at room temperature for 1.5 hours.