

For Research Use Only

PCOLCE Polyclonal antibody, PBS Only

Catalog Number: 14993-1-PBS



Basic Information

Catalog Number:

14993-1-PBS

Size:

100ug, Concentration: 1 mg/ml by Nanodrop;

Source:

Rabbit

Isotype:

IgG

Immunogen Catalog Number:

AG6979

GenBank Accession Number:

BC000574

GeneID (NCBI):

5118

UNIPROT ID:

Q15113

Full Name:

procollagen C-endopeptidase enhancer

Calculated MW:

48 kDa

Observed MW:

48-50 kDa

Purification Method:

Antigen affinity purification

Applications

Tested Applications:

WB, IHC, Indirect ELISA

Species Specificity:

human

Background Information

PCOLCE (Procollagen C-endopeptidase enhancer 1), also named as PCPE1, is a secreted glycoprotein that functions as a positive regulator of procollagen processing. PCOLCE binds to the C-terminal propeptide of type I procollagen and enhances procollagen C-proteinase activity. Procollagen C-proteinases have important roles in developmental processes and assembly of the extracellular matrix.

Storage

Storage:

Store at -80°C.

Storage Buffer:

PBS only, pH7.3

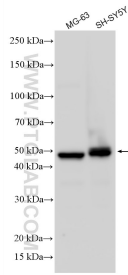
For technical support and original validation data for this product please contact:

T: 1 (888) 4PTGLAB (1-888-478-4522) (toll free in USA), or 1(312) 455-8498 (outside USA)

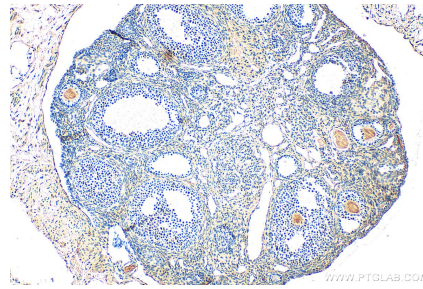
E: proteintech@ptglab.com
W: ptglab.com

This product is exclusively available under Proteintech Group brand and is not available to purchase from any other manufacturer.

Selected Validation Data



Various lysates were subjected to SDS PAGE followed by western blot with 14993-1-AP (PCOLCE antibody) at dilution of 1:3000 incubated at room temperature for 1.5 hours. This data was developed using the same antibody clone with 14993-1-PBS in a different storage buffer formulation.



Immunohistochemical analysis of paraffin-embedded mouse ovary tissue slide using 14993-1-AP (PCOLCE antibody) at dilution of 1:400 (under 10x lens). Heat mediated antigen retrieval with Tris-EDTA buffer (pH 9.0). This data was developed using the same antibody clone with 14993-1-PBS in a different storage buffer formulation.