

For Research Use Only

PDCL3 Polyclonal antibody

Catalog Number: 14997-1-AP



Basic Information

Catalog Number: 14997-1-AP	GenBank Accession Number: BC001021	Purification Method: Antigen affinity purification
Size: 150ul , Concentration: 200 µg/ml by Nanodrop and 133 µg/ml by Bradford method using BSA as the standard;	GeneID (NCBI): 79031	Recommended Dilutions: WB 1:500-1:3000 IF 1:10-1:100
Source: Rabbit	Full Name: phosducin-like 3	
Isotype: IgG	Calculated MW: 28 kDa	
Immunogen Catalog Number: AG6983	Observed MW: 35 kDa	

Applications

Tested Applications: IF, WB, ELISA	Positive Controls:
Species Specificity: human, mouse	WB : A2780 cells, COLO 320 cells, MCF-7 cells IF : HepG2 cells, MCF-7 cells, HeLa cells

Background Information

Storage

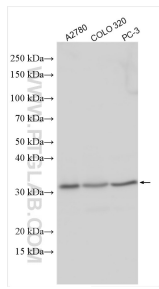
Storage:
Store at -20°C. Stable for one year after shipment.
Storage Buffer:
PBS with 0.02% sodium azide and 50% glycerol pH 7.3.
Aliquoting is unnecessary for -20°C storage

*** 20ul sizes contain 0.1% BSA

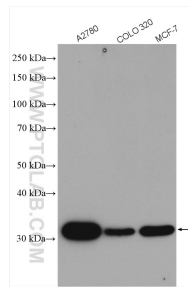
For technical support and original validation data for this product please contact:
T: 1 (888) 4PTGLAB (1-888-478-4522) (toll free in USA), or 1(312) 455-8498 (outside USA)
E: proteintech@ptglab.com
W: ptglab.com

This product is exclusively available under Proteintech Group brand and is not available to purchase from any other manufacturer.

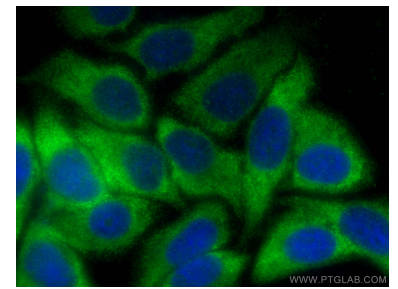
Selected Validation Data



Various lysates were subjected to SDS PAGE followed by western blot with 14997-1-AP (PDCL3 antibody) at dilution of 1:3000 incubated at room temperature for 1.5 hours.



Various lysates were subjected to SDS PAGE followed by western blot with 14997-1-AP (PDCL3 antibody) at dilution of 1:1500 incubated at room temperature for 1.5 hours.



Immunofluorescent analysis of (-20°C Ethanol) fixed HepG2 cells using PDCL3 antibody (14997-1-AP) at dilution of 1:400 and CoraLite®488-Conjugated AffiniPure Goat Anti-Rabbit IgG(H+L).



Immunofluorescent analysis of HepG2 cells, using PDCL3 antibody 14997-1-AP at 1:25 dilution and Rhodamine-labeled goat anti-rabbit IgG (red).