

For Research Use Only

PRSS2 Polyclonal antibody

Catalog Number: 15005-1-AP **4 Publications**



Basic Information

Catalog Number: 15005-1-AP	GenBank Accession Number: BC030260	Purification Method: Antigen affinity purification
Size: 150ul , Concentration: 500 µg/ml by Nanodrop and 267 µg/ml by Bradford method using BSA as the standard;	GeneID (NCBI): 5645	Recommended Dilutions: WB 1:500-1:3000 IHC 1:200-1:800
Source: Rabbit	Full Name: protease, serine, 2 (trypsin 2)	
Isotype: IgG	Calculated MW: 26 kDa	
Immunogen Catalog Number: AG6461	Observed MW: 26 kDa, 35 kDa	

Applications

Tested Applications: IHC, WB, ELISA	Positive Controls: WB : Raji cells, HepG2 cells, mouse thymus tissue IHC : human small intestine tissue,
Cited Applications: IHC, WB	
Species Specificity: human, mouse, rat	
Cited Species: human, mouse	
Note-IHC: suggested antigen retrieval with TE buffer pH 9.0; (*) Alternatively, antigen retrieval may be performed with citrate buffer pH 6.0	

Background Information

The human pancreas produces three isoforms of trypsinogen encoded by separate genes, the PRSS1 (protease, serine 1), PRSS2, and PRSS3 genes. PRSS2 is also named as TRY2(trypsin-2), TRYP2. In the ileum, it may be involved in defensin processing, including DEFA5. The preproprotein comprises 247 amino acids, including a 15-amino acid signal peptide and an 8-amino acid activation peptide.

Notable Publications

Author	Pubmed ID	Journal	Application
Yu Chen	36240716	Tissue Cell	WB, IHC
Tomoyuki Araki	36375250	Biochem Biophys Res Commun	IHC
Timothy L Hostelley	34125181	Biol Open	WB

Storage

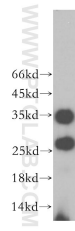
Storage:
Store at -20°C. Stable for one year after shipment.
Storage Buffer:
PBS with 0.02% sodium azide and 50% glycerol pH 7.3.
Aliquoting is unnecessary for -20°C storage

*** 20ul sizes contain 0.1% BSA

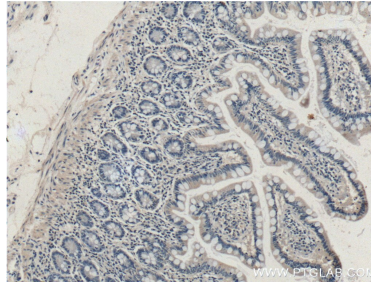
For technical support and original validation data for this product please contact:
T: 1 (888) 4PTGLAB (1-888-478-4522) (toll free in USA), or 1(312) 455-8498 (outside USA)
E: proteintech@ptglab.com
W: ptglab.com

This product is exclusively available under Proteintech Group brand and is not available to purchase from any other manufacturer.

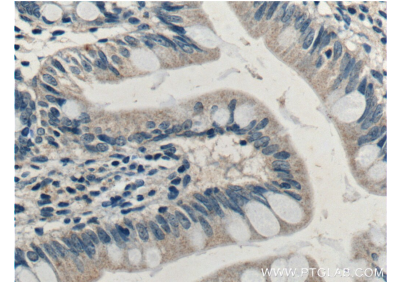
Selected Validation Data



Raji cells were subjected to SDS PAGE followed by western blot with 15005-1-AP (PRSS2 antibody) at dilution of 1:400 incubated at room temperature for 1.5 hours.



Immunohistochemical analysis of paraffin-embedded human small intestine tissue slide using 15005-1-AP (PRSS2 Antibody) at dilution of 1:400 (under 10x lens).



Immunohistochemical analysis of paraffin-embedded human small intestine tissue slide using 15005-1-AP (PRSS2 Antibody) at dilution of 1:400 (under 40x lens).