

For Research Use Only

# ARIH2 Polyclonal antibody, PBS Only

Catalog Number: 15006-1-PBS

Featured Product



## Basic Information

Catalog Number:

15006-1-PBS

Size:

100ug, Concentration: 1 mg/ml by Nanodrop;

Source:

Rabbit

Isotype:

IgG

Immunogen Catalog Number:

AG6507

GenBank Accession Number:

BC000422

GeneID (NCBI):

10425

UNIPROT ID:

O95376

Full Name:

ariadne homolog 2 (Drosophila)

Calculated MW:

58 kDa

Observed MW:

59 kDa

Purification Method:

Antigen affinity purification

## Applications

Tested Applications:

WB, IF/ICC, IP, Indirect ELISA

Species Specificity:

human, mouse, rat

## Background Information

ARIH2 (Protein ariadne-2 homolog) is also named as ARI2, TRIAD1 and belongs to the RBR family and ariadne subfamily. It mediates 'Lys-48'- and 'Lys-63'-linked polyubiquitination and subsequent proteasomal degradation of modified proteins.

## Storage

Storage:

Store at -80°C.

Storage Buffer:

PBS only, pH7.3

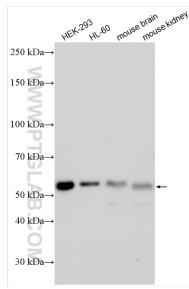
For technical support and original validation data for this product please contact:

T: 1 (888) 4PTGLAB (1-888-478-4522) (toll free in USA), or 1(312) 455-8498 (outside USA)

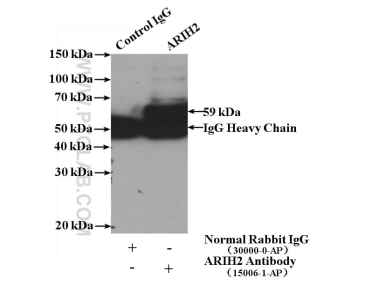
E: [proteintech@ptglab.com](mailto:proteintech@ptglab.com)  
W: [ptglab.com](http://ptglab.com)

This product is exclusively available under Proteintech Group brand and is not available to purchase from any other manufacturer.

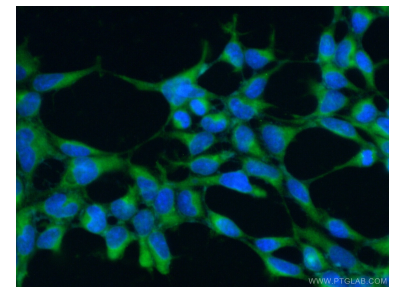
## Selected Validation Data



Various lysates were subjected to SDS PAGE followed by western blot with 15006-1-AP (ARIH2 antibody) at dilution of 1:2000 incubated at room temperature for 1.5 hours. This data was developed using the same antibody clone with 15006-1-PBS in a different storage buffer formulation.



IP result of anti-ARIH2 (IP:15006-1-AP, 4ug; Detection:15006-1-AP 1:500) with HeLa cells lysate 1200ug. This data was developed using the same antibody clone with 15006-1-PBS in a different storage buffer formulation.



Immunofluorescent analysis of (-20°C Ethanol) fixed HEK-293 cells using 15006-1-AP (ARIH2 antibody) at dilution of 1:50 and Alexa Fluor 488-conjugated AffiniPure Goat Anti-Rabbit IgG(H+L). This data was developed using the same antibody clone with 15006-1-PBS in a different storage buffer formulation.