

For Research Use Only

ENC1 Polyclonal antibody

Catalog Number: 15007-1-AP

Featured Product

2 Publications



Basic Information

Catalog Number:

15007-1-AP

Size:

150ul, Concentration: 550 ug/ml by Nanodrop and 260 ug/ml by Bradford method using BSA as the standard;

Source:

Rabbit

Isotype:

IgG

Immunogen Catalog Number:

AG6607

GenBank Accession Number:

BC000418

GeneID (NCBI):

8507

UNIPROT ID:

O14682

Full Name:

ectodermal-neural cortex (with BTB-like domain)

Calculated MW:

66 kDa

Observed MW:

67 kDa, 57 kDa

Purification Method:

Antigen affinity purification

Recommended Dilutions:

WB 1:1000-1:4000

IP 0.5-4.0 ug for 1.0-3.0 mg of total protein lysate

IHC 1:20-1:200

Applications

Tested Applications:

WB, IP, IHC, ELISA

Cited Applications:

WB, IHC, CoIP

Species Specificity:

human, mouse

Cited Species:

human

Note-IHC: suggested antigen retrieval with TE buffer pH 9.0; (*) Alternatively, antigen retrieval may be performed with citrate buffer pH 6.0

Positive Controls:

WB : SH-SY5Y cells, Neuro-2a cells, MCF-7 cells, mouse brain tissue, human lung tissue

IP : mouse brain tissue,

IHC : human pancreas tissue,

Notable Publications

Author	Pubmed ID	Journal	Application
Marianna Naki	35563580	Int J Mol Sci	CoIP
Ying Cui	33816464	Front Cell Dev Biol	WB, IHC

Storage

Storage:

Store at -20°C. Stable for one year after shipment.

Storage Buffer:

PBS with 0.02% sodium azide and 50% glycerol pH 7.3.

Aliquoting is unnecessary for -20°C storage

*** 20ul sizes contain 0.1% BSA

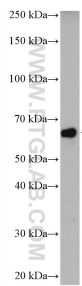
For technical support and original validation data for this product please contact:

T: 1 (888) 4PTGLAB (1-888-478-4522) (toll free in USA), or 1(312) 455-8498 (outside USA)

E: proteintech@ptglab.com
W: ptglab.com

This product is exclusively available under Proteintech Group brand and is not available to purchase from any other manufacturer.

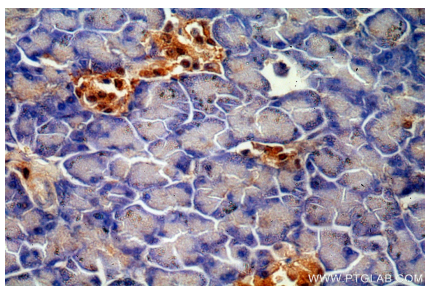
Selected Validation Data



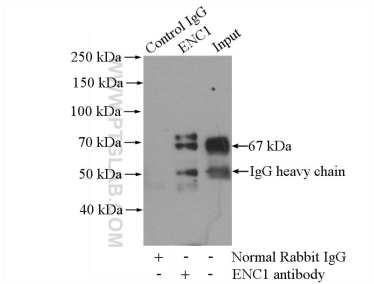
SH-SY5Y cells were subjected to SDS PAGE followed by western blot with 15007-1-AP (ENC1 antibody) at dilution of 1:2000 incubated at room temperature for 1.5 hours.



Immunohistochemical analysis of paraffin-embedded human pancreas using 15007-1-AP (ENC1 antibody) at dilution of 1:50 (under 10x lens).



Immunohistochemical analysis of paraffin-embedded human pancreas using 15007-1-AP (ENC1 antibody) at dilution of 1:50 (under 40x lens).



IP result of anti-ENC1 (IP:15007-1-AP, 4ug; Detection:15007-1-AP 1:1000) with mouse brain tissue lysate 2640ug.