

For Research Use Only

SKP2 Polyclonal antibody

Catalog Number: 15010-1-AP

Featured Product

54 Publications



Basic Information

Catalog Number:

15010-1-AP

Size:

150ul, Concentration: 600 ug/ml by Nanodrop;

Source:

Rabbit

Isotype:

IgG

Immunogen Catalog Number:

AG6826

GenBank Accession Number:

BC001441

GeneID (NCBI):

6502

UNIPROT ID:

Q13309

Full Name:

S-phase kinase-associated protein 2 (p45)

Calculated MW:

48 kDa

Observed MW:

46-48 kDa

Purification Method:

Antigen affinity purification

Recommended Dilutions:

WB 1:1000-1:5000

IP 0.5-4.0 ug for 1.0-3.0 mg of total protein lysate

IHC 1:50-1:500

IF/ICC 1:200-1:800

Applications

Tested Applications:

WB, IHC, IF/ICC, IP, ELISA

Cited Applications:

WB, IHC, IF, IP, CoIP

Species Specificity:

human

Cited Species:

human, mouse, rat

Note-IHC: suggested antigen retrieval with TE buffer pH 9.0; (*) Alternatively, antigen retrieval may be performed with citrate buffer pH 6.0

Positive Controls:

WB : HEK-293 cells, Jurkat cells

IP : HEK-293 cells,

IHC : human lung cancer tissue, human breast cancer tissue

IF/ICC : HepG2 cells,

Background Information

SKP2(S-phase kinase-associated protein 2) is also named as FBXL1 and belongs to the F-box family. It regulates cellular proliferation by targeting several cell cycle-regulated proteins for ubiquitination and degradation, including cyclin-dependent kinase inhibitor CDKN1B(PMID:22200179). The acetylation of SKP2 in the nuclear localization signal (NLS) can promote its cytoplasmic retention, and cytoplasmic SKP2 enhances cellular migration through ubiquitination and destruction of CDH. This protein has 3 isoforms produced by alternative splicing (PMID:26497688, PMID:16902410).

Notable Publications

Author	Pubmed ID	Journal	Application
Yong-Li Zhang	34679694	Antioxidants (Basel)	WB
Xiaohong Xia	34599966	J Biol Chem	IF
Dian Bao	34803506	Int J Biol Sci	WB,IF

Storage

Storage:

Store at -20°C. Stable for one year after shipment.

Storage Buffer:

PBS with 0.02% sodium azide and 50% glycerol pH 7.3.

Aliquoting is unnecessary for -20°C storage

*** 20ul sizes contain 0.1% BSA

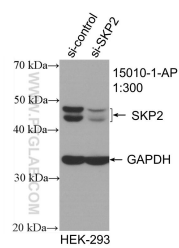
For technical support and original validation data for this product please contact:

T: 1 (888) 4PTGLAB (1-888-478-4522) (toll free in USA), or 1(312) 455-8498 (outside USA)

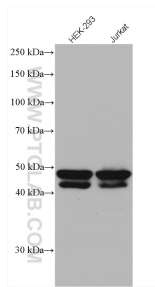
E: proteintech@ptglab.com
W: ptglab.com

This product is exclusively available under Proteintech Group brand and is not available to purchase from any other manufacturer.

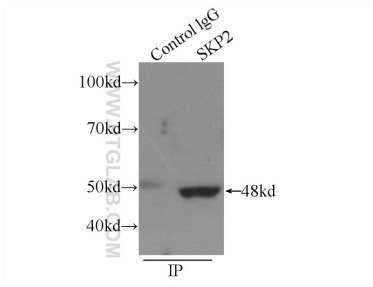
Selected Validation Data



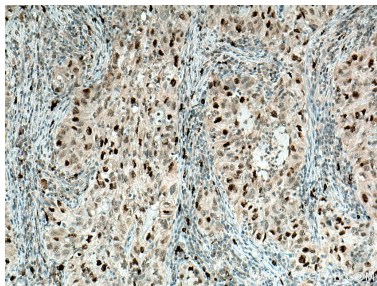
WB result of SKP2 antibody (15010-1-AP; 1:300; incubated at room temperature for 1.5 hours) with sh-Control and sh-SKP2 transfected HEK-293 cells.



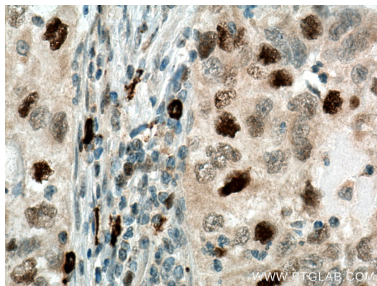
Various lysates were subjected to SDS PAGE followed by western blot with 15010-1-AP (SKP2 antibody) at dilution of 1:2500 incubated at room temperature for 1.5 hours.



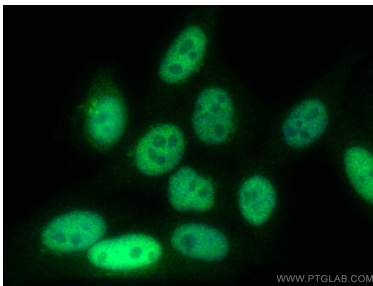
IP result of anti-SKP2 (IP:15010-1-AP, 4ug; Detection:15010-1-AP 1:300) with HEK-293 cells lysate 2440ug.



Immunohistochemical analysis of paraffin-embedded human lung cancer tissue slide using 15010-1-AP (SKP2 antibody) at dilution of 1:200 (under 10x lens). Heat mediated antigen retrieval with Tris-EDTA buffer (pH 9.0).



Immunohistochemical analysis of paraffin-embedded human lung cancer tissue slide using 15010-1-AP (SKP2 antibody) at dilution of 1:200 (under 40x lens). Heat mediated antigen retrieval with Tris-EDTA buffer (pH 9.0).



Immunofluorescent analysis of (4% PFA) fixed HepG2 cells using SKP2 antibody (15010-1-AP) at dilution of 1:400 and CoraLite®488-Conjugated Goat Anti-Rabbit IgG(H+L).