

For Research Use Only

IFT27 Polyclonal antibody

Catalog Number:15017-1-AP

Featured Product

3 Publications



Basic Information

Catalog Number: 15017-1-AP	GenBank Accession Number: BC000566	Purification Method: Antigen affinity purification
Size: 150ul , Concentration: 750 ug/ml by Nanodrop and 300 ug/ml by Bradford method using BSA as the standard;	GeneID (NCBI): 11020	Recommended Dilutions: WB 1:500-1:1000 IHC 1:20-1:200 IF/ICC 1:10-1:100
Source: Rabbit	UNIPROT ID: Q9BW83	
Isotype: IgG	Full Name: RAB, member of RAS oncogene family-like 4	
Immunogen Catalog Number: AG6967	Calculated MW: 20 kDa	
	Observed MW: 20 kDa	

Applications

Tested Applications: WB, IHC, IF/ICC, ELISA	Positive Controls: WB : human RPE cells, IHC : human brain tissue, human testis tissue IF/ICC : hTERT-RPE1 cells,
Cited Applications: WB	
Species Specificity: human	
Cited Species: human	

Note-IHC: suggested antigen retrieval with TE buffer pH 9.0; (*) Alternatively, antigen retrieval may be performed with citrate buffer pH 6.0

Background Information

RABL4, also named as IFT27, is a GTP-binding protein that is a core component of the intraflagellar transport complex B. It plays a role in the cargo loading of the retrograde transport machinery.

Notable Publications

Author	Pubmed ID	Journal	Application
Malavika Raman	26389662	Nat Cell Biol	WB
Zi Gao	36264766	Anal Chem	WB
Tina Beyer	29615496	Mol Cell Proteomics	WB

Storage

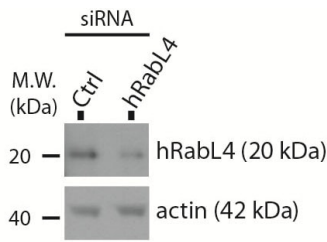
Storage:
Store at -20°C. Stable for one year after shipment.
Storage Buffer:
PBS with 0.02% sodium azide and 50% glycerol pH 7.3.
Aliquoting is unnecessary for -20°C storage

*** 20ul sizes contain 0.1% BSA

For technical support and original validation data for this product please contact:
T: 1 (888) 4PTGLAB (1-888-478-4522) (toll free in USA), or 1(312) 455-8498 (outside USA)
E: proteintech@ptglab.com
W: ptglab.com

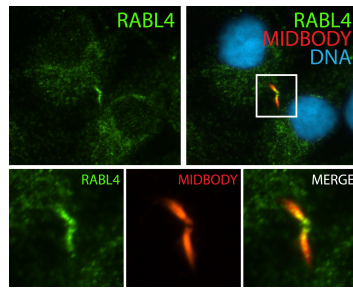
This product is exclusively available under Proteintech Group brand and is not available to purchase from any other manufacturer.

Selected Validation Data

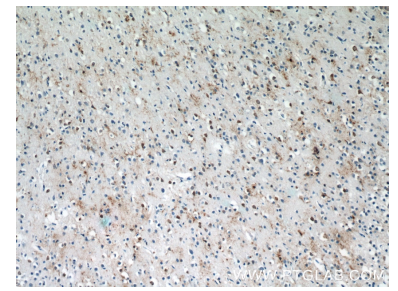


Human Retinal Pigment Epithelium (RPE) cells

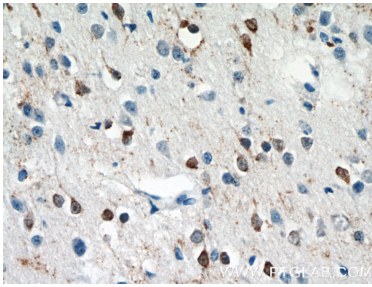
WB result of anti-RABL4 (15017-1-AP) with human RPE cells (siRNA and control) by Dr. Gerald Liew, Maxence Nachury's lab.



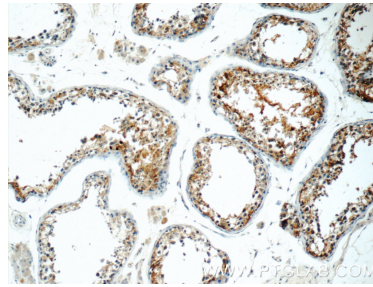
IF result (cytoplasm and the spindle midzone stain) of anti-RABL4 (IFT27, 15017-1-AP, 1:50) with telophase hTERT-RPE1 (MeOH fixed) by Dr. Moshe Kim.



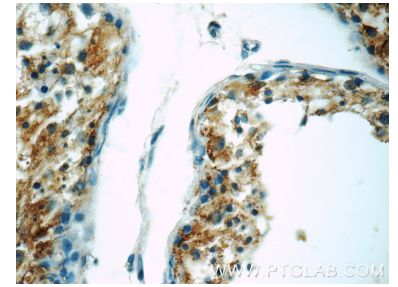
Immunohistochemical analysis of paraffin-embedded human brain tissue slide using 15017-1-AP (IFT27 antibody at dilution of 1:50) under 10x lens).



Immunohistochemical analysis of paraffin-embedded human brain tissue slide using 15017-1-AP (IFT27 antibody at dilution of 1:50) under 40x lens).



Immunohistochemical analysis of paraffin-embedded human testis tissue slide using 15017-1-AP (IFT27 antibody at dilution of 1:50) under 10x lens).



Immunohistochemical analysis of paraffin-embedded human testis tissue slide using 15017-1-AP (IFT27 antibody at dilution of 1:50) under 40x lens).