

For Research Use Only

CITED2 Polyclonal antibody, PBS Only

Catalog Number:15021-1-PBS



Basic Information

Catalog Number:

15021-1-PBS

Size:

100ug , Concentration: 1 mg/ml by Nanodrop;

Source:

Rabbit

Isotype:

IgG

Immunogen Catalog Number:

AG7078

GenBank Accession Number:

BC004377

GeneID (NCBI):

10370

UNIPROT ID:

Q99967

Full Name:

Cbp/p300-interacting transactivator, with Glu/Asp-rich carboxy-terminal domain, 2

Calculated MW:

28 kDa

Observed MW:

36 kDa, 27 kDa

Purification Method:

Antigen affinity purification

Applications

Tested Applications:

WB, IHC, IF/ICC, Indirect ELISA

Species Specificity:

human, mouse, rat

Background Information

CITED2, also named as P35srj, is a cAMP-responsive element-binding protein (CBP)/p300-transactivator, with an ED(Glu/Asp)-rich C-terminal domain that acts as an important modulator in the development of the heart [PMID:10552932]. There are two isoforms of CITED2 protein and the calculated molecular weight of them are 24kDa and 28 kDa. The 28 kDa isoform having modification site may migrate to 35 kDa and 24 kDa isoform having modification site may migrate to 27 kDa (PMID: 23082118). It is proposed to be a negative regulator of HIF-1 α through its competitive binding to the CH1 domain of CBP/p300, which mediated signaling and to a decrease in HIF-1-responsive genes such as VEGF [PMID:9887100]. In addition, it is also a co-activator of the transcriptional activity of the TFAP2 isoform, which is an extensively expressed nuclear protein with functions in embryogenesis, inflammation, and stress responses[PMID:22735262].

Storage

Storage:

Store at -80°C.

Storage Buffer:

PBS Only

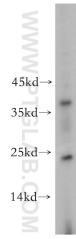
For technical support and original validation data for this product please contact:

T: 1 (888) 4PTGLAB (1-888-478-4522) (toll free in USA), or 1(312) 455-8498 (outside USA)

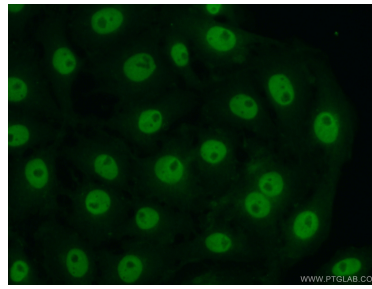
E: proteintech@ptglab.com
W: ptglab.com

This product is exclusively available under Proteintech Group brand and is not available to purchase from any other manufacturer.

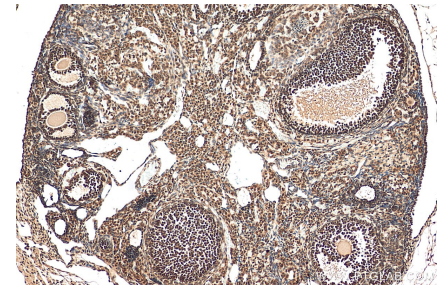
Selected Validation Data



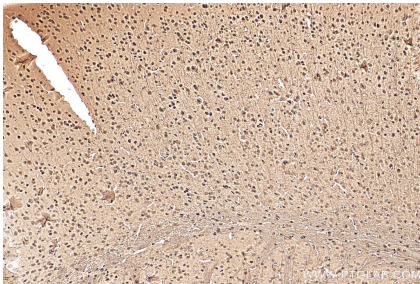
SH-SY5Y cells were subjected to SDS PAGE followed by western blot with 15021-1-AP (CITED2 antibody) at dilution of 1:400 incubated at room temperature for 1.5 hours. This data was developed using the same antibody clone with 15021-1-PBS in a different storage buffer formulation.



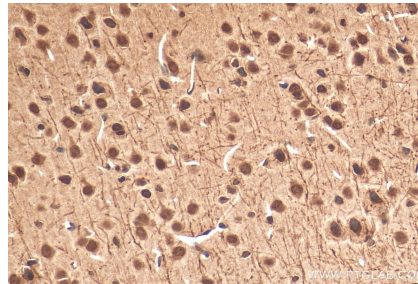
Immunofluorescent analysis of (10% Formaldehyde) fixed SH-SY5Y cells using 15021-1-AP (CITED2 antibody) at dilution of 1:50 and Alexa Fluor 488-conjugated AffiniPure Goat Anti-Rabbit IgG(H+L). This data was developed using the same antibody clone with 15021-1-PBS in a different storage buffer formulation.



Immunohistochemical analysis of paraffin-embedded mouse ovary tissue slide using 15021-1-AP (CITED2 antibody) at dilution of 1:200 (under 10x lens). Heat mediated antigen retrieval with Tris-EDTA buffer (pH 9.0). This data was developed using the same antibody clone with 15021-1-PBS in a different storage buffer formulation.



Immunohistochemical analysis of paraffin-embedded mouse brain tissue slide using 15021-1-AP (CITED2 antibody) at dilution of 1:200 (under 10x lens). Heat mediated antigen retrieval with Tris-EDTA buffer (pH 9.0). This data was developed using the same antibody clone with 15021-1-PBS in a different storage buffer formulation.



Immunohistochemical analysis of paraffin-embedded mouse brain tissue slide using 15021-1-AP (CITED2 antibody) at dilution of 1:200 (under 40x lens). Heat mediated antigen retrieval with Tris-EDTA buffer (pH 9.0). This data was developed using the same antibody clone with 15021-1-PBS in a different storage buffer formulation.