

For Research Use Only

POLR3E Polyclonal antibody

Catalog Number: 15022-1-AP



Basic Information

Catalog Number:

15022-1-AP

Size:

150ul , Concentration: 300 ug/ml by Nanodrop and 267 ug/ml by Bradford method using BSA as the standard;

Source:

Rabbit

Isotype:

IgG

Immunogen Catalog Number:

AG7098

GenBank Accession Number:

BC000285

GeneID (NCBI):

55718

UNIPROT ID:

Q9NVU0

Full Name:

polymerase (RNA) III (DNA directed)
polypeptide E (80kD)

Calculated MW:

80 kDa

Observed MW:

80 kDa

Purification Method:

Antigen affinity purification

Recommended Dilutions:

WB 1:500-1:1000

IP 0.5-4.0 ug for 1.0-3.0 mg of total protein lysate

Applications

Tested Applications:

WB, IP, ELISA

Species Specificity:

human, mouse, rat

Positive Controls:

WB : PC-3 cells,

IP : PC-3 cells,

Storage

Storage:

Store at -20°C. Stable for one year after shipment.

Storage Buffer:

PBS with 0.02% sodium azide and 50% glycerol pH 7.3.

Aliquoting is unnecessary for -20°C storage

*** 20ul sizes contain 0.1% BSA

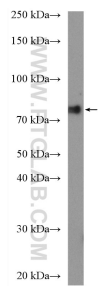
For technical support and original validation data for this product please contact:

T: 1 (888) 4PTGLAB (1-888-478-4522) (toll free
in USA), or 1(312) 455-8498 (outside USA)

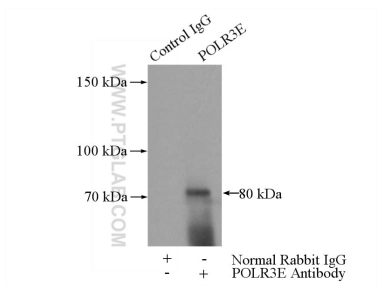
E: proteintech@ptglab.com
W: ptglab.com

This product is exclusively available under Proteintech Group brand and is not available to purchase from any other manufacturer.

Selected Validation Data



PC-3 cells were subjected to SDS PAGE followed by western blot with 15022-1-AP (POLR3E antibody) at dilution of 1:600 incubated at room temperature for 1.5 hours.



IP result of anti-POLR3E (IP:15022-1-AP, 5ug; Detection:15022-1-AP 1:300) with PC-3 cells lysate 3200ug.