

For Research Use Only

# CPSF4 Polyclonal antibody

Catalog Number: 15023-1-AP

Featured Product

13 Publications



## Basic Information

### Catalog Number:

15023-1-AP

### Size:

150ul, Concentration: 450 ug/ml by Nanodrop and 313 ug/ml by Bradford method using BSA as the standard;

### Source:

Rabbit

### Isotype:

IgG

### Immunogen Catalog Number:

AG7103

### GenBank Accession Number:

BC003101

### GeneID (NCBI):

10898

### UNIPROT ID:

O95639

### Full Name:

cleavage and polyadenylation specific factor 4, 30kDa

### Calculated MW:

30 kDa

### Observed MW:

27-30 kDa

### Purification Method:

Antigen affinity purification

### Recommended Dilutions:

WB 1:500-1:1000

IP 0.5-4.0 ug for 1.0-3.0 mg of total protein lysate

IHC 1:20-1:200

IF/ICC 1:20-1:200

## Applications

### Tested Applications:

WB, IHC, IF/ICC, IP, ELISA

### Cited Applications:

WB, IHC, IF, IP

### Species Specificity:

human, mouse

### Cited Species:

human, pig

**Note-IHC: suggested antigen retrieval with TE buffer pH 9.0; (\*) Alternatively, antigen retrieval may be performed with citrate buffer pH 6.0**

### Positive Controls:

WB: Jurkat cells, HepG2 cells, HeLa cells, HEK-293 cells

IP: HeLa cells,

IHC: human endometrial cancer tissue,

IF/ICC: HepG2 cells,

## Background Information

The mature 3-prime ends of cellular mRNAs are produced by endonucleolytic cleavage of the primary transcripts, followed by polyadenylation of the upstream cleavage products. The cleavage and polyadenylation specificity factor (CPSF) has an essential role in pre-mRNA 3-prime end processing in that it is required in both the cleavage step and subsequent poly(A) addition [PMID: 9651582]. CPSF4 is a component of the cleavage and polyadenylation specificity factor (CPSF) complex, whose other components are CPSF1, CPSF2, CPSF3 and FIP1L1.

## Notable Publications

Author	Pubmed ID	Journal	Application
Liutao Chen	36094741	EMBO Rep	WB
Zhipeng Tang	26628108	Mol Oncol	WB,IF
Sadaf Ashraf	30886197	Sci Rep	IHC,IF

## Storage

### Storage:

Store at -20°C. Stable for one year after shipment.

### Storage Buffer:

PBS with 0.02% sodium azide and 50% glycerol pH 7.3.

Aliquoting is unnecessary for -20°C storage

\*\*\* 20ul sizes contain 0.1% BSA

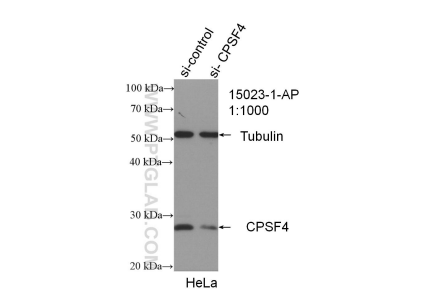
For technical support and original validation data for this product please contact:

T: 1 (888) 4PTGLAB (1-888-478-4522) (toll free in USA), or 1(312) 455-8498 (outside USA)

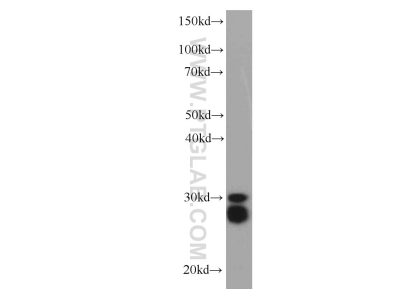
E: [proteintech@ptglab.com](mailto:proteintech@ptglab.com)  
W: [ptglab.com](http://ptglab.com)

This product is exclusively available under Proteintech Group brand and is not available to purchase from any other manufacturer.

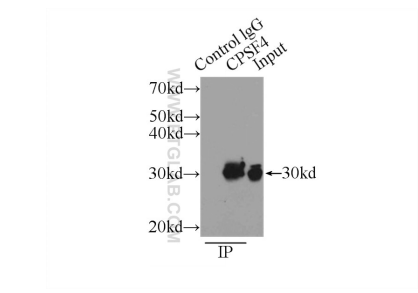
Selected Validation Data



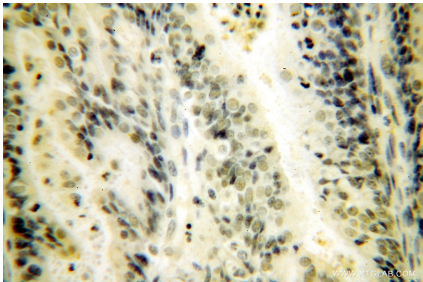
WB result of CPSF4 antibody (15023-1-AP; 1:1000; incubated at room temperature for 1.5 hours) with sh-Control and sh-CPSF4 transfected HEK-293 cells.



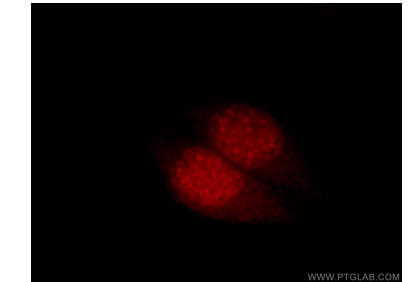
Jurkat cells were subjected to SDS PAGE followed by western blot with 15023-1-AP (CPSF4 antibody) at dilution of 1:300 incubated at room temperature for 1.5 hours.



IP result of anti-CPSF4 (IP:15023-1-AP, 3ug; Detection:15023-1-AP 1:400) with HeLa cells lysate 1000ug.



Immunohistochemical analysis of paraffin-embedded human endometrial cancer using 15023-1-AP (CPSF4 antibody) at dilution of 1:50 (under 40x lens).



Immunofluorescent analysis of HepG2 cells, using CPSF4 antibody 15023-1-AP at 1:50 dilution and Rhodamine-labeled goat anti-rabbit IgG (red).