

For Research Use Only

# OSGEP Polyclonal antibody

Catalog Number: 15033-1-AP

1 Publications



## Basic Information

### Catalog Number:

15033-1-AP

### Size:

150ul, Concentration: 400 ug/ml by Nanodrop and 140 ug/ml by Bradford method using BSA as the standard;

### Source:

Rabbit

### Isotype:

IgG

### Immunogen Catalog Number:

AG4308

### GenBank Accession Number:

BC032310

### GeneID (NCBI):

55644

### UNIPROT ID:

Q9NPF4

### Full Name:

O-sialoglycoprotein endopeptidase

### Calculated MW:

36 kDa

### Observed MW:

36 kDa

### Purification Method:

Antigen affinity purification

### Recommended Dilutions:

WB 1:1000-1:4000

IHC 1:50-1:500

## Applications

### Tested Applications:

WB, IHC, ELISA

### Cited Applications:

WB

### Species Specificity:

human, mouse

### Cited Species:

human

**Note-IHC: suggested antigen retrieval with TE buffer pH 9.0; (\*) Alternatively, antigen retrieval may be performed with citrate buffer pH 6.0**

### Positive Controls:

**WB** : PC-3 cells, human heart tissue, Raji cells, mouse colon tissue

**IHC** : human kidney tissue, human heart tissue, human pancreas cancer tissue

## Background Information

OSGEP(O-sialoglycoprotein endopeptidase) is also named as hOSGEP, GCPL1 and belongs to the KAE1 / YgjD family. The deduced 335-amino acid OSGEP protein has a predicted molecular mass of 36.4 kDa. It is a protease whose target is O-linked sialic acid-containing glycoproteins, such as episialin(PMID:10859271). It is involved in the metabolism of glycosylated proteins as a glycoprotein-related chaperon protease(PMID: 20824107).

## Notable Publications

Author	Pubmed ID	Journal	Application
Jin-Tao Wang	35104889	Nucleic Acids Res	WB

## Storage

### Storage:

Store at -20°C. Stable for one year after shipment.

### Storage Buffer:

PBS with 0.02% sodium azide and 50% glycerol pH 7.3.

Aliquoting is unnecessary for -20°C storage

\*\*\* 20ul sizes contain 0.1% BSA

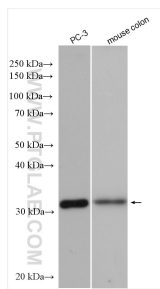
For technical support and original validation data for this product please contact:

T: 1 (888) 4PTGLAB (1-888-478-4522) (toll free in USA), or 1(312) 455-8498 (outside USA)

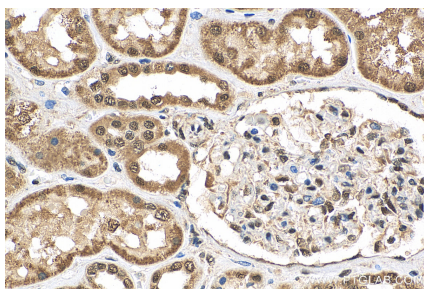
E: [proteintech@ptglab.com](mailto:proteintech@ptglab.com)  
W: [ptglab.com](http://ptglab.com)

This product is exclusively available under Proteintech Group brand and is not available to purchase from any other manufacturer.

## Selected Validation Data



PC-3 cells were subjected to SDS PAGE followed by western blot with 15033-1-AP (OSGEP antibody) at dilution of 1:2000 incubated at room temperature for 1.5 hours.



Immunohistochemical analysis of paraffin-embedded human kidney tissue slide using 15033-1-AP (OSGEP antibody) at dilution of 1:200 (under 40x lens). Heat mediated antigen retrieval with Tris-EDTA buffer (pH 9.0).