

For Research Use Only

CMTM8 Polyclonal antibody

Catalog Number: 15039-1-AP

5 Publications



Basic Information

Catalog Number:

15039-1-AP

Size:

150ul, Concentration: 1000 ug/ml by Nanodrop and 533 ug/ml by Bradford method using BSA as the standard;

Source:

Rabbit

Isotype:

IgG

Immunogen Catalog Number:

AG6776

GenBank Accession Number:

BC041390

GeneID (NCBI):

152189

UNIPROT ID:

Q8IZV2

Full Name:

CKLF-like MARVEL transmembrane domain containing 8

Calculated MW:

20 kDa

Observed MW:

25-28 kDa

Purification Method:

Antigen affinity purification

Recommended Dilutions:

WB 1:500-1:2000

IP 0.5-4.0 ug for 1.0-3.0 mg of total protein lysate

IHC 1:20-1:200

Applications

Tested Applications:

WB, IP, IHC, ELISA

Cited Applications:

WB, IHC

Species Specificity:

human, mouse, rat

Cited Species:

human

Note-IHC: suggested antigen retrieval with TE buffer pH 9.0; (*) Alternatively, antigen retrieval may be performed with citrate buffer pH 6.0

Positive Controls:

WB: mouse liver tissue, mouse pancreas tissue

IP: mouse liver tissue,

IHC: human liver tissue, human pancreas tissue, human pancreas cancer tissue

Background Information

CMTM8, also known as CKLFSF8, is a member of the chemokine-like factor superfamily (CKLFSF). Proteins of this family share similarity with both the chemokine and the transmembrane 4 superfamilies. CMTM8 is an attenuator of EGF-induced signaling (PMID: 16263120). Overexpression of CMTM8 accelerates ligand-induced clearance of EGFR from the cell surface and induces apoptosis via caspase-dependent and -independent pathways (PMID: 17149703). An alternative splice form of CMTM8, CMTM8-v2, arises from a deletion of exon 2. CMTM8-v2 maintains the ability to induce apoptosis (PMID: 17681841).

Notable Publications

Author	Pubmed ID	Journal	Application
Denghui Gao	26503336	Oncol Rep	WB
Meng Yan	33978454	DNA Cell Biol	IHC
Xue Zeng	34978519	Bioengineered	WB

Storage

Storage:

Store at -20°C. Stable for one year after shipment.

Storage Buffer:

PBS with 0.02% sodium azide and 50% glycerol pH 7.3.

Aliquoting is unnecessary for -20°C storage

*** 20ul sizes contain 0.1% BSA

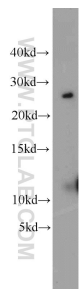
For technical support and original validation data for this product please contact:

T: 1 (888) 4PTGLAB (1-888-478-4522) (toll free in USA), or 1(312) 455-8498 (outside USA)

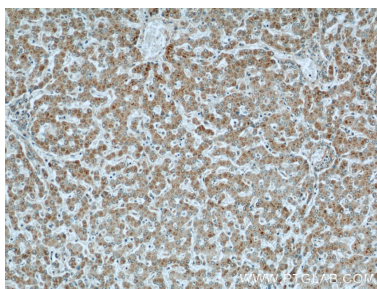
E: proteintech@ptglab.com
W: ptglab.com

This product is exclusively available under Proteintech Group brand and is not available to purchase from any other manufacturer.

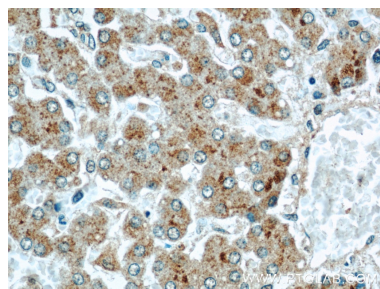
Selected Validation Data



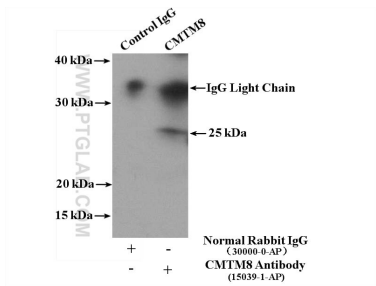
mouse liver tissue were subjected to SDS PAGE followed by western blot with 15039-1-AP (CMTM8 antibody) at dilution of 1:1000 incubated at room temperature for 1.5 hours.



Immunohistochemical analysis of paraffin-embedded human liver using 15039-1-AP (CMTM8 antibody) at dilution of 1:50 (under 10x lens).



Immunohistochemical analysis of paraffin-embedded human liver using 15039-1-AP (CMTM8 antibody) at dilution of 1:50 (under 40x lens).



IP result of anti-CMTM8 (IP:15039-1-AP, 4ug; Detection:15039-1-AP 1:300) with mouse liver tissue lysate 6800ug.