

For Research Use Only

CMTM8 Polyclonal antibody, PBS Only

Catalog Number:15039-1-PBS



Basic Information

Catalog Number:

15039-1-PBS

Size:

100ug , Concentration: 1 mg/ml by Nanodrop;

Source:

Rabbit

Isotype:

IgG

Immunogen Catalog Number:

AG6776

GenBank Accession Number:

BC041390

GeneID (NCBI):

152189

UNIPROT ID:

Q8IZV2

Full Name:

CKLF-like MARVEL transmembrane domain containing 8

Calculated MW:

20 kDa

Observed MW:

25-28 kDa

Purification Method:

Antigen affinity purification

Applications

Tested Applications:

WB, IHC, IP, Indirect ELISA

Species Specificity:

human, mouse

Background Information

CMTM8, also known as CKLFSF8, is a member of the chemokine-like factor superfamily (CKLFSF). Proteins of this family share similarity with both the chemokine and the transmembrane 4 superfamilies. CMTM8 is an attenuator of EGF-induced signaling (PMID: 16263120). Overexpression of CMTM8 accelerates ligand-induced clearance of EGFR from the cell surface and induces apoptosis via caspase-dependent and -independent pathways (PMID: 17149703). An alternative splice form of CMTM8, CMTM8-v2, arises from a deletion of exon 2. CMTM8-v2 maintains the ability to induce apoptosis (PMID: 17681841).

Storage

Storage:

Store at -80°C.

Storage Buffer:

PBS only, pH7.3

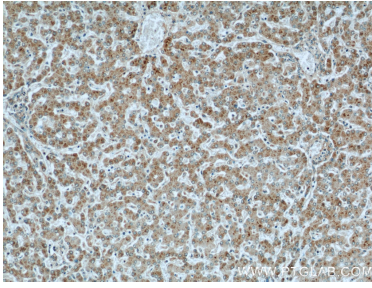
For technical support and original validation data for this product please contact:

T: 1 (888) 4PTGLAB (1-888-478-4522) (toll free in USA), or 1(312) 455-8498 (outside USA)

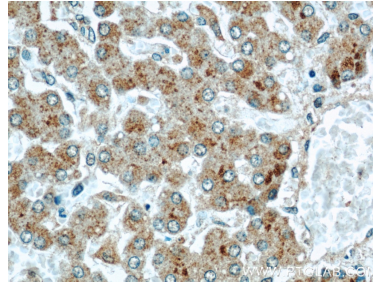
E: proteintech@ptglab.com
W: ptglab.com

This product is exclusively available under Proteintech Group brand and is not available to purchase from any other manufacturer.

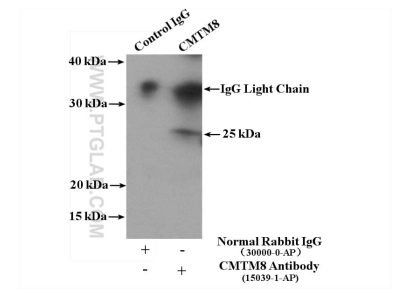
Selected Validation Data



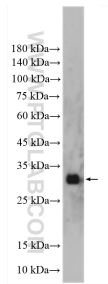
Immunohistochemical analysis of paraffin-embedded human liver using 15039-1-AP (CMTM8 antibody) at dilution of 1:50 (under 10x lens). This data was developed using the same antibody clone with 15039-1-PBS in a different storage buffer formulation.



Immunohistochemical analysis of paraffin-embedded human liver using 15039-1-AP (CMTM8 antibody) at dilution of 1:50 (under 40x lens). This data was developed using the same antibody clone with 15039-1-PBS in a different storage buffer formulation.



IP result of anti-CMTM8 (IP:15039-1-AP, 4ug; Detection:15039-1-AP 1:300) with mouse liver tissue lysate 6800ug. This data was developed using the same antibody clone with 15039-1-PBS in a different storage buffer formulation.



mouse bladder tissue were subjected to SDS PAGE followed by western blot with 15039-1-AP (CMTM8 antibody) at dilution of 1:1000 incubated at room temperature for 1.5 hours. This data was developed using the same antibody clone with 15039-1-PBS in a different storage buffer formulation.