

For Research Use Only

POMP Polyclonal antibody

Catalog Number: 15046-1-AP

Featured Product

2 Publications



Basic Information

Catalog Number:

15046-1-AP

Size:

150ul, Concentration: 350 ug/ml by Nanodrop and 213 ug/ml by Bradford method using BSA as the standard;

Source:

Rabbit

Isotype:

IgG

Immunogen Catalog Number:

AG6987

GenBank Accession Number:

BC003390

GeneID (NCBI):

51371

UNIPROT ID:

Q9Y244

Full Name:

proteasome maturation protein

Calculated MW:

16 kDa

Observed MW:

16 kDa

Purification Method:

Antigen affinity purification

Recommended Dilutions:

WB 1:1000-1:4000

IHC 1:20-1:200

IF/ICC 1:200-1:800

Applications

Tested Applications:

WB, IHC, IF/ICC, ELISA

Cited Applications:

WB

Species Specificity:

human

Cited Species:

human, mouse

Note-IHC: suggested antigen retrieval with TE buffer pH 9.0; (*) Alternatively, antigen retrieval may be performed with citrate buffer pH 6.0

Positive Controls:

WB : HeLa cells, HepG2 cells, L02 cells

IHC : human liver tissue, human skin tissue

IF/ICC : HepG2 cells, HeLa cells

Notable Publications

Author	Pubmed ID	Journal	Application
Barbara A Zieba	28728908	J Dermatol Sci	WB
Yuki Sasaki	35393946	JCI Insight	WB

Storage

Storage:

Store at -20°C. Stable for one year after shipment.

Storage Buffer:

PBS with 0.02% sodium azide and 50% glycerol pH 7.3.

Aliquoting is unnecessary for -20°C storage

*** 20ul sizes contain 0.1% BSA

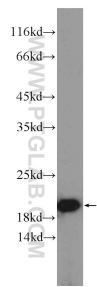
For technical support and original validation data for this product please contact:

T: 1 (888) 4PTGLAB (1-888-478-4522) (toll free in USA), or 1(312) 455-8498 (outside USA)

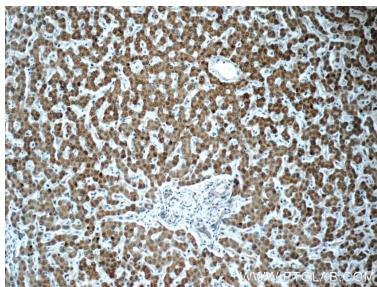
E: proteintech@ptglab.com
W: ptglab.com

This product is exclusively available under Proteintech Group brand and is not available to purchase from any other manufacturer.

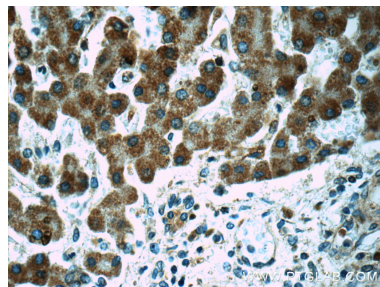
Selected Validation Data



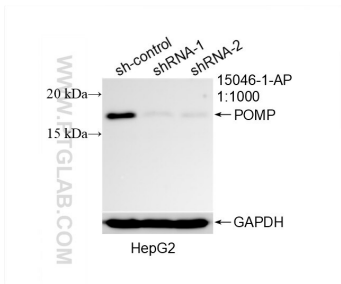
HeLa cells were subjected to SDS PAGE followed by western blot with 15046-1-AP (POMP Antibody) at dilution of 1:2000 incubated at room temperature for 1.5 hours.



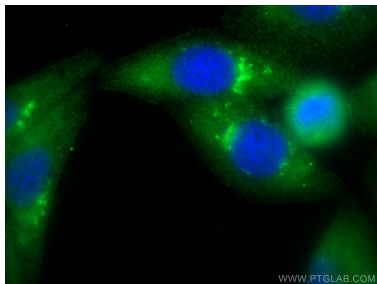
Immunohistochemical analysis of paraffin-embedded human liver tissue slide using 15046-1-AP (POMP Antibody) at dilution of 1:50.



Immunohistochemical analysis of paraffin-embedded human liver tissue slide using 15046-1-AP (POMP Antibody) at dilution of 1:50.



WB result of POMP antibody (15046-1-AP; 1:1000; incubated at room temperature for 1.5 hours) with sh-Control and sh-POMP transfected HepG2 cells.



Immunofluorescent analysis of (-20°C Ethanol) fixed HepG2 cells using POMP antibody (15046-1-AP) at dilution of 1:400 and Multi-rAb Coralite® Plus 488-Goat Anti-Rabbit Recombinant Secondary Antibody (H+L) (RGAR002).