

For Research Use Only

# ARPC2 Polyclonal antibody

Catalog Number: 15058-1-AP

Featured Product

7 Publications



## Basic Information

<b>Catalog Number:</b> 15058-1-AP	<b>GenBank Accession Number:</b> BC000590	<b>Purification Method:</b> Antigen affinity purification
<b>Size:</b> 150ul , Concentration: 350 µg/ml by Nanodrop and 227 µg/ml by Bradford method using BSA as the standard;	<b>GeneID (NCBI):</b> 10109	<b>Recommended Dilutions:</b> WB 1:1000-1:8000 IP 0.5-4.0 ug for 1.0-3.0 mg of total protein lysate IHC 1:50-1:500 IF 1:200-1:800
<b>Source:</b> Rabbit	<b>Full Name:</b> actin related protein 2/3 complex, subunit 2, 34kDa	
<b>Isotype:</b> IgG	<b>Calculated MW:</b> 34 kDa	
<b>Immunogen Catalog Number:</b> AG7041	<b>Observed MW:</b> 34 kDa	

## Applications

**Tested Applications:**  
FC, IF, IHC, IP, WB, ELISA

**Cited Applications:**  
IF, IP, WB

**Species Specificity:**  
human, mouse, rat

**Cited Species:**  
human

**Note-IHC: suggested antigen retrieval with TE buffer pH 9.0; (\*) Alternatively, antigen retrieval may be performed with citrate buffer pH 6.0**

**Positive Controls:**

**WB :** HT-1080 cells, HeLa cells, mouse skeletal muscle tissue, PC-3 cells, 3T3-L1 cells, NIH/3T3 cells, MCF-7 cells, Jurkat cells

**IP :** HeLa cells,

**IHC :** human breast cancer tissue,

**IF :** HeLa cells,

## Background Information

### Notable Publications

Author	Pubmed ID	Journal	Application
Nikki R Paul	26370503	J Cell Biol	WB
Kailiang Zhao	32128961	EMBO Rep	IP
Ping Chen	30720048	Int J Oncol	

## Storage

**Storage:**

Store at -20°C. Stable for one year after shipment.

**Storage Buffer:**

PBS with 0.02% sodium azide and 50% glycerol pH 7.3.

Aliquoting is unnecessary for -20°C storage

\*\*\* 20ul sizes contain 0.1% BSA

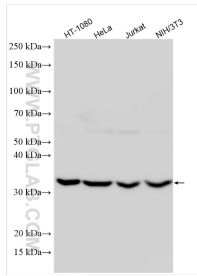
For technical support and original validation data for this product please contact:

T: 1 (888) 4PTGLAB (1-888-478-4522) (toll free in USA), or 1(312) 455-8498 (outside USA)

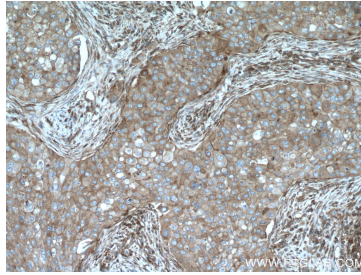
E: [proteintech@ptglab.com](mailto:proteintech@ptglab.com)  
W: [ptglab.com](http://ptglab.com)

This product is exclusively available under Proteintech Group brand and is not available to purchase from any other manufacturer.

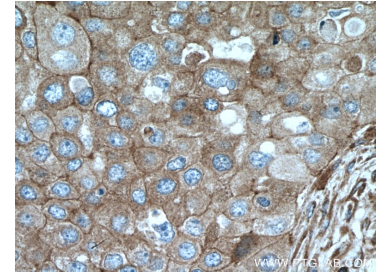
## Selected Validation Data



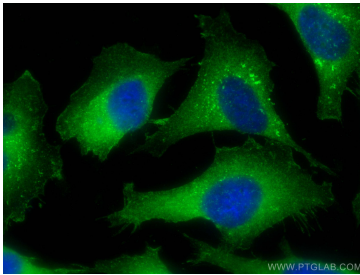
Various lysates were subjected to SDS PAGE followed by western blot with 15058-1-AP (ARPC2 antibody) at dilution of 1:4000 incubated at room temperature for 1.5 hours.



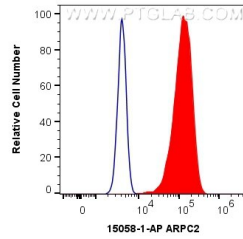
Immunohistochemical analysis of paraffin-embedded human breast cancer tissue slide using 15058-1-AP (ARPC2 antibody) at dilution of 1:200 (under 10x lens. Heat mediated antigen retrieval with Tris-EDTA buffer (pH 9.0).



Immunohistochemical analysis of paraffin-embedded human breast cancer tissue slide using 15058-1-AP (ARPC2 antibody) at dilution of 1:200 (under 40x lens. Heat mediated antigen retrieval with Tris-EDTA buffer (pH 9.0).



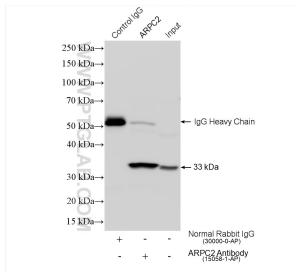
Immunofluorescent analysis of (-20°C Ethanol) fixed HeLa cells using ARPC2 antibody (15058-1-AP) at dilution of 1:400 and CoraLite®488-Conjugated AffiniPure Goat Anti-Rabbit IgG(H+L).



$1 \times 10^6$  HeLa cells were intracellularly stained with 0.4 ug Anti-Human ARPC2 (15058-1-AP) and CoraLite®488-Conjugated AffiniPure Goat Anti-Rabbit IgG(H+L) at dilution 1:1000 (red), or 0.4 ug Isotype Control. Cells were fixed with 4% PFA and permeabilized with Flow Cytometry Perm Buffer (PF00011-C).



MCF7 cells were subjected to SDS PAGE followed by western blot with 15058-1-AP (ARPC2 antibody) at dilution of 1:400 incubated at room temperature for 1.5 hours.



IP result of anti-ARPC2 (IP:15058-1-AP, 4ug; Detection:15058-1-AP 1:6000) with HeLa cells lysate 1200 ug.