

For Research Use Only

GSTT2 Polyclonal antibody

Catalog Number: 15063-1-AP

1 Publications



Basic Information

Catalog Number:

15063-1-AP

Size:

150ul, Concentration: 450 ug/ml by Nanodrop and 333 ug/ml by Bradford method using BSA as the standard;

Source:

Rabbit

Isotype:

IgG

Immunogen Catalog Number:

AG7066

GenBank Accession Number:

BC002415

GeneID (NCBI):

2953

UNIPROT ID:

P0CG29

Full Name:

glutathione S-transferase theta 2

Calculated MW:

27 kDa

Observed MW:

28 kDa

Purification Method:

Antigen affinity purification

Recommended Dilutions:

WB 1:500-1:3000

IHC 1:100-1:400

IF/ICC 1:20-1:200

Applications

Tested Applications:

WB, IHC, IF/ICC, ELISA

Cited Applications:

WB

Species Specificity:

human, mouse, rat

Cited Species:

mouse

Note-IHC: suggested antigen retrieval with TE buffer pH 9.0; (*) Alternatively, antigen retrieval may be performed with citrate buffer pH 6.0

Positive Controls:

WB : rat liver tissue, L02 cells, mouse liver tissue, mouse lung tissue

IHC : human prostate cancer tissue,

IF/ICC : L02 cells,

Notable Publications

Author	Pubmed ID	Journal	Application
Cheng-Niu Wang	32987309	Bioorg Chem	WB

Storage

Storage:

Store at -20°C. Stable for one year after shipment.

Storage Buffer:

PBS with 0.02% sodium azide and 50% glycerol pH 7.3.

Aliquoting is unnecessary for -20°C storage

*** 20ul sizes contain 0.1% BSA

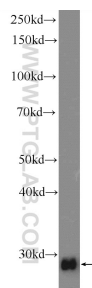
For technical support and original validation data for this product please contact:

T: 1 (888) 4PTGLAB (1-888-478-4522) (toll free in USA), or 1(312) 455-8498 (outside USA)

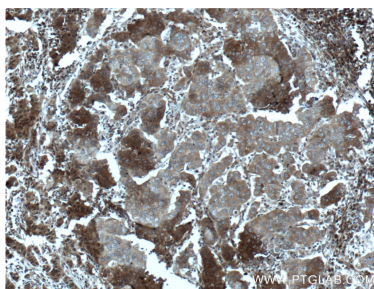
E: proteintech@ptglab.com
W: ptglab.com

This product is exclusively available under Proteintech Group brand and is not available to purchase from any other manufacturer.

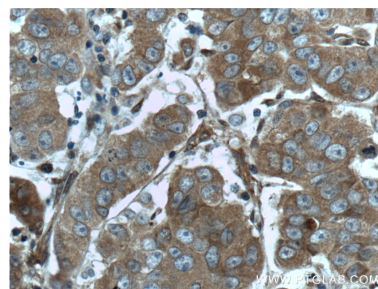
Selected Validation Data



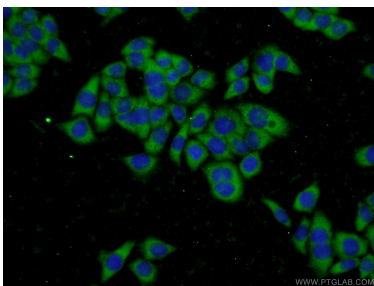
rat liver tissue were subjected to SDS PAGE followed by western blot with 15063-1-AP (GSTT2 Antibody) at dilution of 1:1500 incubated at room temperature for 1.5 hours.



Immunohistochemical analysis of paraffin-embedded human prostate cancer tissue slide using 15063-1-AP (GSTT2 antibody) at dilution of 1:200 (under 10x lens. Heat mediated antigen retrieval with Tris-EDTA buffer (pH 9.0).



Immunohistochemical analysis of paraffin-embedded human prostate cancer tissue slide using 15063-1-AP (GSTT2 antibody) at dilution of 1:200 (under 40x lens. Heat mediated antigen retrieval with Tris-EDTA buffer (pH 9.0).



Immunofluorescent analysis of L02 cells using 15063-1-AP (GSTT2 antibody) at dilution of 1:50 and Alexa Fluor 488-conjugated Goat Anti-Rabbit IgG(H+L).