

For Research Use Only

ANAPC11 Polyclonal antibody, PBS Only

Catalog Number: 15065-1-PBS



Basic Information

Catalog Number: 15065-1-PBS	GenBank Accession Number: BC000607	Purification Method: Antigen affinity purification
Size: 100ug, Concentration: 1 mg/ml by Nanodrop;	GeneID (NCBI): 51529	
Source: Rabbit	UNIPROT ID: Q9NYG5	
Isotype: IgG	Full Name: anaphase promoting complex subunit 11	
Immunogen Catalog Number: AG7069	Calculated MW: 21 kDa, 10 kDa	
	Observed MW: 21 kDa	

Applications

Tested Applications:
WB, Indirect ELISA

Species Specificity:
human, mouse, rat

Background Information

Anaphase-promoting complex subunit 11 (ANAPC11) is a core catalytic subunit of the anaphase-promoting complex/cyclosome (APC/C). ANAPC11 is involved in the ubiquitination and degradation of key cell cycle regulators, including cyclin B and securin, facilitating the transition from metaphase to anaphase during cell division (PMID: 11739784; 18485873). ANAPC11 also mediates the ubiquitination and degradation of the Forkhead transcription factor FOXO3, promoting cell proliferation and lymph node metastasis in urothelial bladder cancer (PMID: 37573356).

Storage

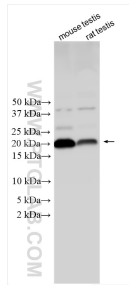
Storage:
Store at -80°C.

Storage Buffer:
PBS only, pH7.3

For technical support and original validation data for this product please contact:
T: 1 (888) 4PTGLAB (1-888-478-4522) (toll free in USA), or 1(312) 455-8498 (outside USA) E: proteintech@ptglab.com
W: ptglab.com

This product is exclusively available under Proteintech Group brand and is not available to purchase from any other manufacturer.

Selected Validation Data



Various lysates were subjected to SDS PAGE followed by western blot with 15065-1-AP (ANAPC11 antibody) at dilution of 1:800 incubated at room temperature for 1.5 hours. This data was developed using the same antibody clone with 15065-1-PBS in a different storage buffer formulation.