

For Research Use Only

METTL3 Polyclonal antibody

Catalog Number: 15073-1-AP

Featured Product

336 Publications



Basic Information

Catalog Number: 15073-1-AP	GenBank Accession Number: BC001650	Purification Method: Antigen affinity purification
Size: 150ul , Concentration: 600 µg/ml by Nanodrop;	GeneID (NCBI): 56339	Recommended Dilutions: WB 1:500-1:2000 IP 0.5-4.0 ug for 1.0-3.0 mg of total protein lysate IHC 1:750-1:3000
Source: Rabbit	Full Name: methyltransferase like 3	
Isotype: IgG	Calculated MW: 64 kDa	
Immunogen Catalog Number: AG7110	Observed MW: 65-70 kDa	

Applications

Tested Applications: IHC, IP, WB, ELISA	Positive Controls:
Cited Applications: ChIP, CoIP, FC, IF, IHC, IP, RIP, WB	WB : HEK-293 cells, HT-1080 cells, HeLa cells, mouse testis tissue, Jurkat cells, NCCIT cells, Neuro-2a cells, HepG2 cells, COS-7 cells, rat testis tissue, A549 cells
Species Specificity: Human, Mouse, Monkey, Rat	IP : HEK-293 cells,
Cited Species: human, goat, chicken, rat, mouse, monkey, zebrafish, pig, drosophila	IHC : human renal cell carcinoma tissue, human lung cancer tissue
Note-IHC: suggested antigen retrieval with TE buffer pH 9.0; (*) Alternatively, antigen retrieval may be performed with citrate buffer pH 6.0	

Background Information

METTL3 is a key S-adenosyl-L-methionine-binding subunit, which is a component of a complex multicomponent enzyme that catalyzes the methylation of internal adenosine residues in eukaryotic mRNA, forming N6-methyladenosine. It contains 2 putative nuclear localization signals and 2 consensus methylation motifs. The calculated molecular weight of METTL3 is 64 kDa, but modified METTL3 is about 65-70 kDa.

Notable Publications

Author	Pubmed ID	Journal	Application
Zhang Zhang	34594034	Nat Methods	WB
Fanpeng Zhao	34593014	Mol Neurodegener	WB,IHC
Brandon J Gheller	33083017	Cell Death Discov	WB

Storage

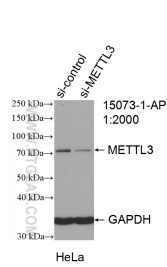
Storage:
Store at -20°C. Stable for one year after shipment.
Storage Buffer:
PBS with 0.02% sodium azide and 50% glycerol pH 7.3.
Aliquoting is unnecessary for -20°C storage

*** 20ul sizes contain 0.1% BSA

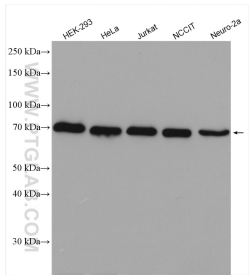
For technical support and original validation data for this product please contact:
T: 1 (888) 4PTGLAB (1-888-478-4522) (toll free in USA), or 1(312) 455-8498 (outside USA)
E: proteintech@ptglab.com
W: ptglab.com

This product is exclusively available under Proteintech Group brand and is not available to purchase from any other manufacturer.

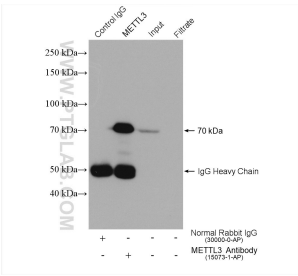
Selected Validation Data



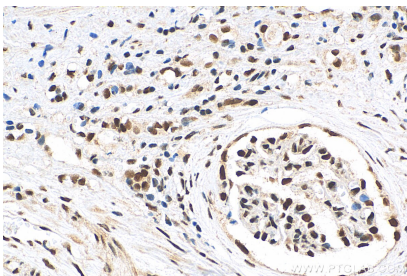
WB result of METTL3 antibody (15073-1-AP; 1:2000; incubated at room temperature for 1.5 hours) with sh-Control and sh-METTL3 transfected HeLa cells.



Various lysates were subjected to SDS PAGE followed by western blot with 15073-1-AP (METTL3 antibody) at dilution of 1:1000 incubated at room temperature for 1.5 hours.



IP result of anti-METTL3(IP:15073-1-AP, 4ug; Detection:15073-1-AP 1:4000) with HEK-293 cells lysate 1800 ug.



Immunohistochemical analysis of paraffin-embedded human renal cell carcinoma tissue slide using 15073-1-AP (METTL3 antibody) at dilution of 1:1500 (under 40x lens). Heat mediated antigen retrieval with Tris-EDTA buffer (pH 9.0).