

For Research Use Only

PI4K2B Polyclonal antibody

Catalog Number: 15074-1-AP

3 Publications



Basic Information

Catalog Number:

15074-1-AP

Size:

150ul, Concentration: 700 ug/ml by Nanodrop and 400 ug/ml by Bradford method using BSA as the standard;

Source:

Rabbit

Isotype:

IgG

Immunogen Catalog Number:

AG7120

GenBank Accession Number:

BC051749

GeneID (NCBI):

55300

UNIPROT ID:

Q8TCG2

Full Name:

phosphatidylinositol 4-kinase type 2 beta

Calculated MW:

55 kDa

Observed MW:

50-54 kDa

Purification Method:

Antigen affinity purification

Recommended Dilutions:

WB 1:500-1:2400

IHC 1:20-1:200

IF/ICC 1:10-1:100

Applications

Tested Applications:

WB, IHC, IF/ICC, ELISA

Cited Applications:

WB, IHC, IF

Species Specificity:

human, mouse, rat

Cited Species:

human

Note-IHC: suggested antigen retrieval with TE buffer pH 9.0; (*) Alternatively, antigen retrieval may be performed with citrate buffer pH 6.0

Positive Controls:

WB : HepG2 cells, mouse kidney tissue

IHC : human liver tissue,

IF/ICC : HepG2 cells,

Notable Publications

Author	Pubmed ID	Journal	Application
Zhengming Wu	35844135	EMBO J	IF
Yani Zhang	37189142	BMC Med Genomics	IHC
Martina Tufano	36781840	Cell Death Dis	WB

Storage

Storage:

Store at -20°C. Stable for one year after shipment.

Storage Buffer:

PBS with 0.02% sodium azide and 50% glycerol pH 7.3.

Aliquoting is unnecessary for -20°C storage

*** 20ul sizes contain 0.1% BSA

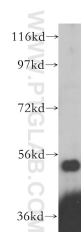
For technical support and original validation data for this product please contact:

T: 1 (888) 4PTGLAB (1-888-478-4522) (toll free in USA), or 1(312) 455-8498 (outside USA)

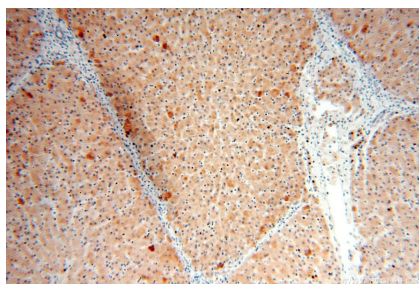
E: proteintech@ptglab.com
W: ptglab.com

This product is exclusively available under Proteintech Group brand and is not available to purchase from any other manufacturer.

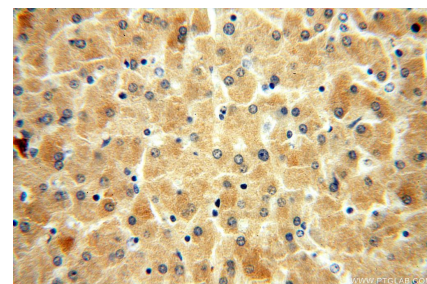
Selected Validation Data



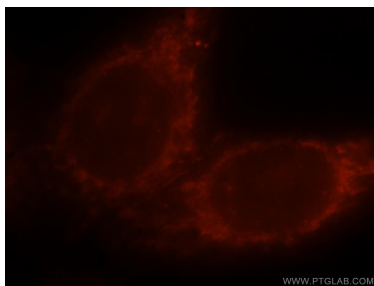
HepG2 cells were subjected to SDS PAGE followed by western blot with 15074-1-AP (PI4K2B antibody) at dilution of 1:400 incubated at room temperature for 1.5 hours.



Immunohistochemical analysis of paraffin-embedded human liver using 15074-1-AP (PI4K2B antibody) at dilution of 1:100 (under 10x lens).



Immunohistochemical analysis of paraffin-embedded human liver using 15074-1-AP (PI4K2B antibody) at dilution of 1:100 (under 40x lens).



Immunofluorescent analysis of HepG2 cells, using PI4K2B antibody 15074-1-AP at 1:25 dilution and Rhodamine-labeled goat anti-rabbit IgG (red).