

For Research Use Only

# SUOX Polyclonal antibody

Catalog Number: 15075-1-AP

4 Publications



## Basic Information

### Catalog Number:

15075-1-AP

### Size:

150ul , Concentration: 1000 ug/ml by Nanodrop and 753 ug/ml by Bradford method using BSA as the standard;

### Source:

Rabbit

### Isotype:

IgG

### Immunogen Catalog Number:

AG7146

### GenBank Accession Number:

BC065193

### GeneID (NCBI):

6821

### UNIPROT ID:

P51687

### Full Name:

sulfite oxidase

### Calculated MW:

60 kDa

### Observed MW:

52 kDa, 60 kDa

### Purification Method:

Antigen affinity purification

### Recommended Dilutions:

WB 1:500-1:3000

IP 0.5-4.0 ug for 1.0-3.0 mg of total protein lysate

IHC 1:50-1:500

IF/ICC 1:10-1:100

## Applications

### Tested Applications:

WB, IHC, IF/ICC, IP, ELISA

### Cited Applications:

WB

### Species Specificity:

human, mouse, rat

### Cited Species:

human, mouse

**Note-IHC: suggested antigen retrieval with TE buffer pH 9.0; (\*) Alternatively, antigen retrieval may be performed with citrate buffer pH 6.0**

### Positive Controls:

WB : human liver tissue, L02 cells, mouse liver tissue

IP : mouse liver tissue,

IHC : human liver tissue,

IF/ICC : Hela cells,

## Background Information

SUOX(sulfite oxidase) catalyzes the oxidation of sulfite to sulfate, the terminal reaction in the oxidative degradation pathway of the sulfur-containing amino acids cysteine and methionine. The enzyme is a dimer of identical subunits and is located in the intermembrane space of mitochondria(PMID:9600976). Defects in SUOX are the cause of isolated sulfite oxidase deficiency (ISOD).

## Notable Publications

Author	Pubmed ID	Journal	Application
Pilar González-García	32975579	Hum Mol Genet	WB
Marta Luna-Sánchez	27856619	EMBO Mol Med	WB
Roman Heather B HB	23350603	Antioxid Redox Signal	WB

## Storage

### Storage:

Store at -20°C. Stable for one year after shipment.

### Storage Buffer:

PBS with 0.02% sodium azide and 50% glycerol pH 7.3.

Aliquoting is unnecessary for -20°C storage

\*\*\* 20ul sizes contain 0.1% BSA

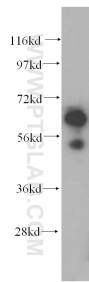
For technical support and original validation data for this product please contact:

T: 1 (888) 4PTGLAB (1-888-478-4522) (toll free in USA), or 1(312) 455-8498 (outside USA)

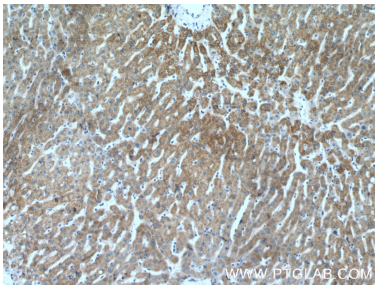
E: [proteintech@ptglab.com](mailto:proteintech@ptglab.com)  
W: [ptglab.com](http://ptglab.com)

This product is exclusively available under Proteintech Group brand and is not available to purchase from any other manufacturer.

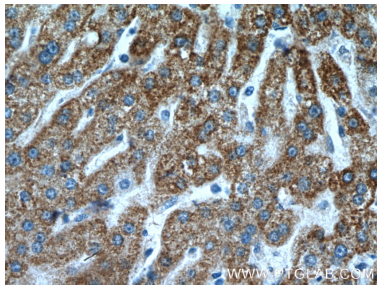
Selected Validation Data



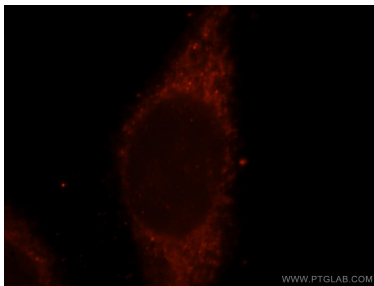
human liver tissue were subjected to SDS PAGE followed by western blot with 15075-1-AP (SUOX antibody) at dilution of 1:1000 incubated at room temperature for 1.5 hours.



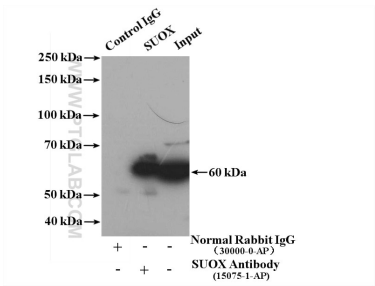
Immunohistochemical analysis of paraffin-embedded human liver tissue slide using 15075-1-AP (SUOX antibody) at dilution of 1:200 (under 10x lens).



Immunohistochemical analysis of paraffin-embedded human liver tissue slide using 15075-1-AP (SUOX antibody) at dilution of 1:200 (under 40x lens).



Immunofluorescent analysis of HeLa cells, using SUOX antibody 15075-1-AP at 1:25 dilution and Rhodamine-labeled goat anti-rabbit IgG (red).



IP result of anti-SUOX (IP:15075-1-AP, 4ug; Detection:15075-1-AP 1:1200) with mouse liver tissue lysate 6000 ug.