

For Research Use Only

# PDAP1 Polyclonal antibody

Catalog Number: 15081-1-AP

4 Publications



## Basic Information

### Catalog Number:

15081-1-AP

### Size:

150ul, Concentration: 1000 ug/ml by Nanodrop and 393 ug/ml by Bradford method using BSA as the standard;

### Source:

Rabbit

### Isotype:

IgG

### Immunogen Catalog Number:

AG7155

### GenBank Accession Number:

BC000684

### GeneID (NCBI):

11333

### UNIPROT ID:

Q13442

### Full Name:

PDGFA associated protein 1

### Calculated MW:

21 kDa

### Observed MW:

28 kDa

### Purification Method:

Antigen affinity purification

### Recommended Dilutions:

WB 1:500-1:1000

IP 0.5-4.0 ug for 1.0-3.0 mg of total protein lysate

IHC 1:50-1:500

IF/ICC 1:200-1:800

## Applications

### Tested Applications:

WB, IHC, IF/ICC, IP, ELISA

### Cited Applications:

WB, IHC, CoIP

### Species Specificity:

human

### Cited Species:

human, mouse

**Note-IHC: suggested antigen retrieval with TE buffer pH 9.0; (\*) Alternatively, antigen retrieval may be performed with citrate buffer pH 6.0**

### Positive Controls:

WB : MCF7 cells, MCF-7 cells

IP : MCF-7 cells,

IHC : human breast cancer tissue,

IF/ICC : MCF-7 cells,

## Notable Publications

Author	Pubmed ID	Journal	Application
Xiao-Xu Zhu	36047966	Cancer Sci	WB
Marimuthu Arivusudar A	23161554	Proteomics Clin Appl	IHC
Takayoshi Shirasaki	39565848	Sci Adv	WB, CoIP

## Storage

### Storage:

Store at -20°C. Stable for one year after shipment.

### Storage Buffer:

PBS with 0.02% sodium azide and 50% glycerol pH 7.3.

Aliquoting is unnecessary for -20°C storage

\*\*\* 20ul sizes contain 0.1% BSA

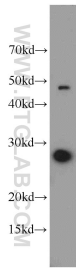
For technical support and original validation data for this product please contact:

T: 1 (888) 4PTGLAB (1-888-478-4522) (toll free in USA), or 1(312) 455-8498 (outside USA)

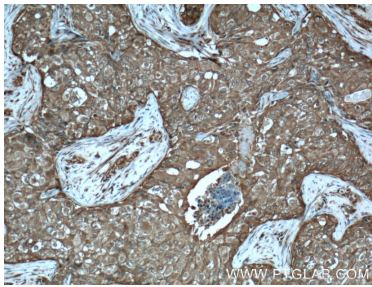
E: [proteintech@ptglab.com](mailto:proteintech@ptglab.com)  
W: [ptglab.com](http://ptglab.com)

This product is exclusively available under Proteintech Group brand and is not available to purchase from any other manufacturer.

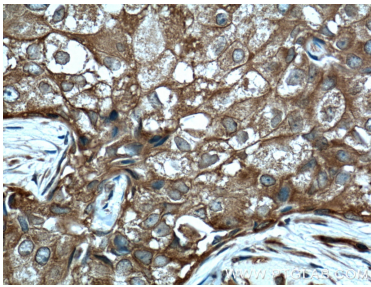
Selected Validation Data



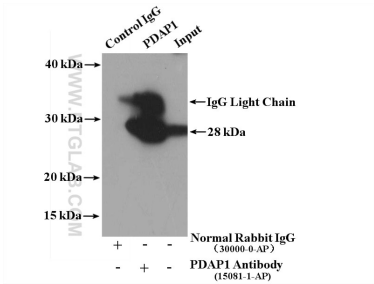
MCF7 cells were subjected to SDS PAGE followed by western blot with 15081-1-AP (PDAP1 antibody) at dilution of 1:800 incubated at room temperature for 1.5 hours.



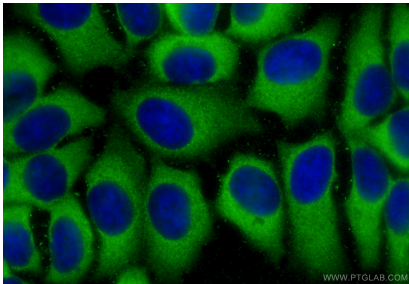
Immunohistochemical analysis of paraffin-embedded human breast cancer tissue slide using 15081-1-AP (PDAP1 Antibody) at dilution of 1:200 (under 10x lens). Heat mediated antigen retrieval with Tris-EDTA buffer (pH 9.0).



Immunohistochemical analysis of paraffin-embedded human breast cancer tissue slide using 15081-1-AP (PDAP1 Antibody) at dilution of 1:200 (under 40x lens). Heat mediated antigen retrieval with Tris-EDTA buffer (pH 9.0).



IP result of anti-PDAP1 (IP:15081-1-AP, 4ug; Detection:15081-1-AP 1:1000) with MCF-7 cells lysate 2400ug.



Immunofluorescent analysis of (-20°C Methanol) fixed MCF-7 cells using PDAP1 antibody (15081-1-AP) at dilution of 1:400 and CoraLite®488-Conjugated Goat Anti-Rabbit IgG(H+L) (SA00013-2).