

For Research Use Only

POLR2H Polyclonal antibody

Catalog Number: 15086-1-AP **3 Publications**



Basic Information

Catalog Number: 15086-1-AP	GenBank Accession Number: BC000739	Purification Method: Antigen affinity purification
Size: 150ul, Concentration: 900 µg/ml by Nanodrop and 407 µg/ml by Bradford method using BSA as the standard;	GeneID (NCBI): 5437	Recommended Dilutions: WB 1:200-1:1000 IP 0.5-4.0 ug for IP and 1:500-1:1000 for WB
Source: Rabbit	Full Name: polymerase (RNA) II (DNA directed) polypeptide H	IHC 1:20-1:200 IF 1:50-1:500
Isotype: IgG	Calculated MW: 17 kDa	
Immunogen Catalog Number: AG7166	Observed MW: 17 kDa	

Applications

Tested Applications:

IF, IHC, IP, WB, ELISA

Cited Applications:

IHC, WB

Species Specificity:

human, mouse, rat

Cited Species:

human, mouse

Note-IHC: suggested antigen retrieval with TE buffer pH 9.0; (*) Alternatively, antigen retrieval may be performed with citrate buffer pH 6.0

Positive Controls:

WB: HL-60 cells, mouse kidney tissue, HeLa cells, MCF-7 cells, mouse liver tissue, rat liver tissue

IP: mouse liver tissue,

IHC: human breast cancer tissue,

IF: HeLa cells,

Background Information

POLR2H, also known as hRPB8, is a 150 amino acid protein, which localizes in nucleolus and is expressed in 228 organ(s), highest expression level in mucosa of transverse colon. POLR2H. POLR2H is a DNA-dependent RNA polymerase catalyzes the transcription of DNA into RNA using the four ribonucleoside triphosphates as substrates. POLR2H is a common component of RNA polymerases I, II and III which synthesize ribosomal RNA precursors, mRNA precursors and many functional non-coding RNAs, and small RNAs, such as 5S rRNA and tRNAs, respectively

Notable Publications

Author	Pubmed ID	Journal	Application
Shutong Fan	30405806	Oncol Lett	IHC
Yuanjun Li	36113479	Mol Cell	WB
Yongpeng Jiang	36443871	Genome Biol	

Storage

Storage:

Store at -20°C. Stable for one year after shipment.

Storage Buffer:

PBS with 0.02% sodium azide and 50% glycerol pH 7.3.

Aliquoting is unnecessary for -20°C storage

***** 20ul sizes contain 0.1% BSA**

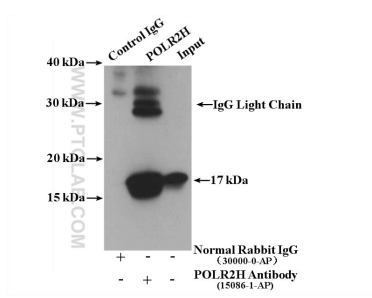
For technical support and original validation data for this product please contact:

T: 1 (888) 4PTGLAB (1-888-478-4522) (toll free in USA), or 1(312) 455-8498 (outside USA)

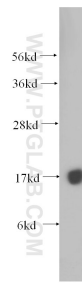
E: proteintech@ptglab.com
W: ptglab.com

This product is exclusively available under Proteintech Group brand and is not available to purchase from any other manufacturer.

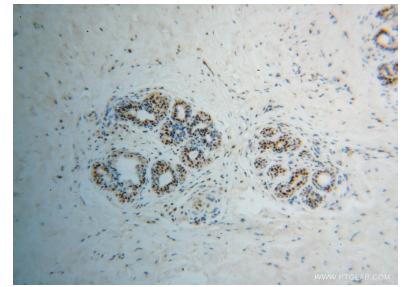
Selected Validation Data



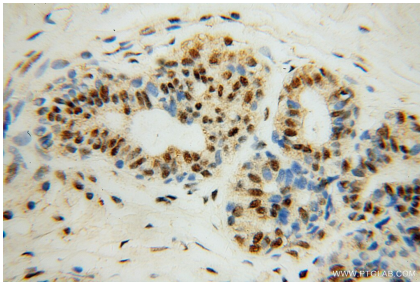
IP result of anti-POLR2H (IP:15086-1-AP, 4 μ g; Detection:15086-1-AP 1:500) with mouse liver tissue lysate 6000 μ g.



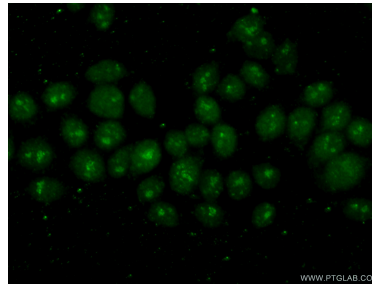
HL-60 cells were subjected to SDS PAGE followed by western blot with 15086-1-AP (POLR2H antibody) at dilution of 1:400 incubated at room temperature for 1.5 hours.



Immunohistochemical analysis of paraffin-embedded human breast cancer using 15086-1-AP (POLR2H antibody) at dilution of 1:100 (under 10x lens).



Immunohistochemical analysis of paraffin-embedded human breast cancer using 15086-1-AP (POLR2H antibody) at dilution of 1:100 (under 40x lens).



Immunofluorescent analysis of (4% PFA) fixed HeLa cells using 15086-1-AP (POLR2H antibody) at dilution of 1:50 and Alexa Fluor 488-conjugated AffiniPure Goat Anti-Rabbit IgG(H+L).