

For Research Use Only

ALDH3A2 Polyclonal antibody

Catalog Number: 15090-1-AP **6 Publications**



Basic Information

Catalog Number: 15090-1-AP	GenBank Accession Number: BC002430	Purification Method: Antigen affinity purification
Size: 150ul , Concentration: 280 µg/ml by Nanodrop and 280 µg/ml by Bradford method using BSA as the standard;	GeneID (NCBI): 224	Recommended Dilutions: WB 1:1000-1:4000 IP 0.5-4.0 ug for 1.0-3.0 mg of total protein lysate IHC 1:50-1:500 IF 1:10-1:100
Source: Rabbit	Full Name: aldehyde dehydrogenase 3 family, member A2	
Isotype: IgG	Calculated MW: 55 kDa	
Immunogen Catalog Number: AG1687	Observed MW: 50-57 kDa	

Applications

Tested Applications: FC, IF, IHC, IP, WB, ELISA	Positive Controls: WB : HEK-293T cells, mouse liver tissue, rat liver tissue IP : HEK-293 cells, IHC : human liver cancer tissue, IF : HeLa cells,
Cited Applications: IHC, WB	
Species Specificity: human, mouse, rat	
Cited Species: human, rat, mouse	
Note-IHC: suggested antigen retrieval with TE buffer pH 9.0; (*) Alternatively, antigen retrieval may be performed with citrate buffer pH 6.0	

Background Information

Notable Publications

Author	Pubmed ID	Journal	Application
Wei Chen	31565850	J Cell Mol Med	IHC
Pamela A Young	30190326	J Biol Chem	WB
Kristian Nzogang Fomo	36313990	Front Med (Lausanne)	

Storage

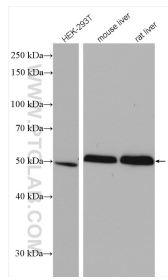
Storage:
Store at -20°C. Stable for one year after shipment.
Storage Buffer:
PBS with 0.02% sodium azide and 50% glycerol pH 7.3.
Aliquoting is unnecessary for -20°C storage

*** 20ul sizes contain 0.1% BSA

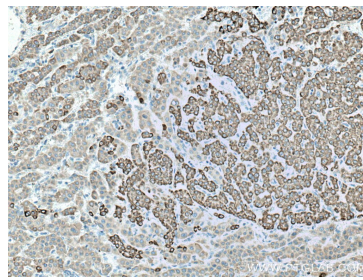
For technical support and original validation data for this product please contact:
T: 1 (888) 4PTGLAB (1-888-478-4522) (toll free in USA), or 1(312) 455-8498 (outside USA)
E: proteintech@ptglab.com
W: ptglab.com

This product is exclusively available under Proteintech Group brand and is not available to purchase from any other manufacturer.

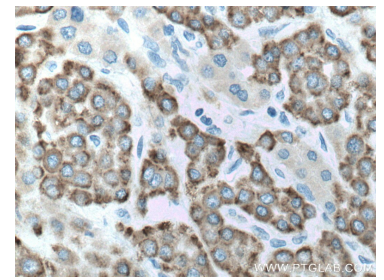
Selected Validation Data



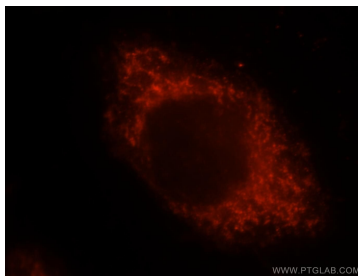
Various lysates were subjected to SDS PAGE followed by western blot with 15090-1-AP (ALDH3A2 antibody) at dilution of 1:2000 incubated at room temperature for 1.5 hours.



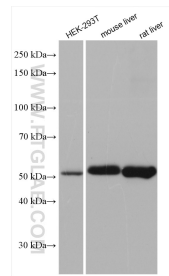
Immunohistochemical analysis of paraffin-embedded human liver cancer tissue slide using 15090-1-AP (ALDH3A2 antibody) at dilution of 1:200 (under 10x lens). Heat mediated antigen retrieval with Tris-EDTA buffer (pH 9.0).



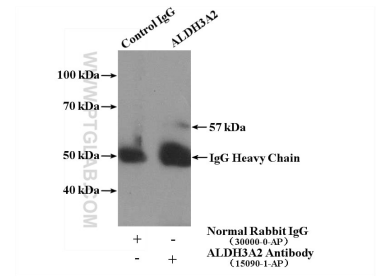
Immunohistochemical analysis of paraffin-embedded human liver cancer tissue slide using 15090-1-AP (ALDH3A2 antibody) at dilution of 1:200 (under 40x lens). Heat mediated antigen retrieval with Tris-EDTA buffer (pH 9.0).



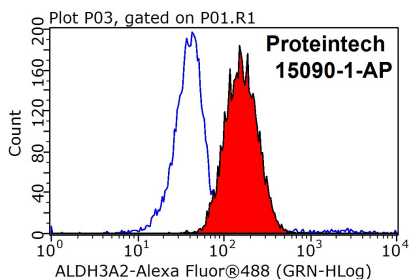
Immunofluorescent analysis of HeLa cells, using ALDH3A2 antibody 15090-1-AP at 1:25 dilution and Rhodamine-labeled goat anti-rabbit IgG (red).



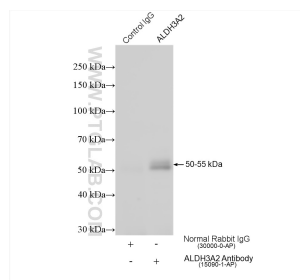
Various lysates were subjected to SDS PAGE followed by western blot with 15090-1-AP (ALDH3A2 antibody) at dilution of 1:5000 incubated at room temperature for 1.5 hours.



IP Result of anti-ALDH3A2 (IP:15090-1-AP, 4ug; Detection:15090-1-AP 1:1000) with HEK-293 cells lysate 3000ug.



1X10⁶ HeLa cells were stained with 0.2ug ALDH3A2 antibody (15090-1-AP, red) and control antibody (blue). Fixed with 90% MeOH blocked with 3% BSA (30 min). Alexa Fluor 488-conjugated AffiniPure Goat Anti-Rabbit IgG(H+L) with dilution 1:1000.



IP result of anti-ALDH3A2 (IP:15090-1-AP, 4ug; Detection:15090-1-AP 1:6000) with HEK-293 cells lysate 680 ug.