

For Research Use Only

# Cadherin-16 Polyclonal antibody

Catalog Number: 15107-1-AP

Featured Product

7 Publications



## Basic Information

<b>Catalog Number:</b> 15107-1-AP	<b>GenBank Accession Number:</b> BC027912	<b>Purification Method:</b> Antigen affinity purification
<b>Size:</b> 150ul , Concentration: 400 µg/ml by Nanodrop and 207 µg/ml by Bradford method using BSA as the standard;	<b>GeneID (NCBI):</b> 1014	<b>Recommended Dilutions:</b> WB 1:2000-1:16000 IHC 1:50-1:500
<b>Source:</b> Rabbit	<b>Full Name:</b> cadherin 16, KSP-cadherin	
<b>Isotype:</b> IgG	<b>Calculated MW:</b> 90 kDa	
<b>Immunogen Catalog Number:</b> AG4343	<b>Observed MW:</b> 130 kDa	

## Applications

### Tested Applications:

IHC, WB, ELISA

### Cited Applications:

IF, WB

### Species Specificity:

human, mouse, rat

### Cited Species:

human, mouse

**Note-IHC: suggested antigen retrieval with TE buffer pH 9.0; (\*) Alternatively, antigen retrieval may be performed with citrate buffer pH 6.0**

### Positive Controls:

**WB :** mouse kidney tissue, human kidney tissue, HEK-293 cells, rat kidney tissue

**IHC :** human kidney tissue, human renal cell carcinoma tissue

## Background Information

Cadherin-16 (CDH16), also known as kidney-specific cadherin (Ksp-cadherin), is a tissue-specific member of the cadherin family of adhesion molecules (PMID: 7615566). It is a glycoprotein expressed by tubular epithelial cells in the kidney. Cadherin-16 expression is down-regulated in renal cell carcinoma, suggesting a role in tumor suppression (PMID: 15886705).

## Notable Publications

Author	Pubmed ID	Journal	Application
Petrina Koumariou	27780871	J Cell Sci	WB,IF
Huzi Xu	35641484	Cell Death Dis	IF
Xiaolin Yang	35350592	Oncol Lett	WB

## Storage

### Storage:

Store at -20°C. Stable for one year after shipment.

### Storage Buffer:

PBS with 0.02% sodium azide and 50% glycerol pH 7.3.

Aliquoting is unnecessary for -20°C storage

\*\*\* 20ul sizes contain 0.1% BSA

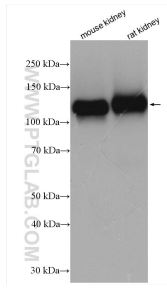
For technical support and original validation data for this product please contact:

T: 1 (888) 4PTGLAB (1-888-478-4522) (toll free in USA), or 1(312) 455-8498 (outside USA)

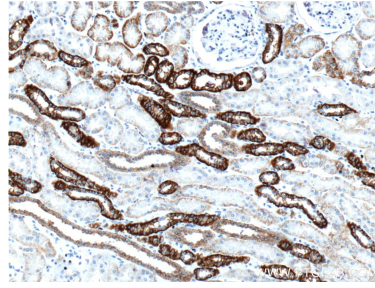
E: [proteintech@ptglab.com](mailto:proteintech@ptglab.com)  
W: [ptglab.com](http://ptglab.com)

This product is exclusively available under Proteintech Group brand and is not available to purchase from any other manufacturer.

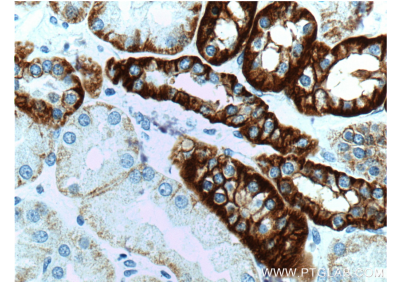
## Selected Validation Data



Various lysates were subjected to SDS PAGE followed by western blot with 15107-1-AP (Cadherin-16 antibody) at dilution of 1:8000 incubated at room temperature for 1.5 hours.



Immunohistochemical analysis of paraffin-embedded human kidney tissue slide using 15107-1-AP (Cadherin-16 antibody at dilution of 1:200 (under 10x lens).



Immunohistochemical analysis of paraffin-embedded human kidney tissue slide using 15107-1-AP (Cadherin-16 antibody at dilution of 1:200 (under 40x lens).