

For Research Use Only

NSDHL Polyclonal antibody

Catalog Number: 15111-1-AP

Featured Product

12 Publications



Basic Information

Catalog Number: 15111-1-AP	GenBank Accession Number: BC000245	Purification Method: Antigen affinity purification
Size: 150ul , Concentration: 393 µg/ml by Nanodrop and 393 µg/ml by Bradford method using BSA as the standard;	GeneID (NCBI): 50814	Recommended Dilutions: WB 1:500-1:3200 IHC 1:20-1:200 IF 1:50-1:500
Source: Rabbit	Full Name: NAD(P) dependent steroid dehydrogenase-like	
Isotype: IgG	Calculated MW: 42 kDa	
Immunogen Catalog Number: AG7097	Observed MW: 42 kDa, 40 kDa	

Applications

Tested Applications: IF, IHC, WB, ELISA	Positive Controls:
Cited Applications: IHC, WB	WB : HeLa cells, human heart tissue, mouse brain tissue
Species Specificity: human, mouse, rat	IHC : human skin cancer tissue, human cervical cancer tissue, human colon tissue, human colon cancer tissue, human lung tissue, human lung cancer tissue, human ovary tissue, human ovary tumor tissue, human stomach tissue, human stomach cancer tissue
Cited Species: human, mouse	IF : HeLa cells,
Note-IHC: suggested antigen retrieval with TE buffer pH 9.0; (*) Alternatively, antigen retrieval may be performed with citrate buffer pH 6.0	

Background Information

NSDHL(Sterol-4-alpha-carboxylate 3-dehydrogenase, decarboxylating) encodes a sterol dehydrogenase or decarboxylase involved in the sequential removal of two C-4 methyl groups in post-squalene cholesterol biosynthesis. Mutations in this gene are associated with human CHILD syndrome (congenital hemidysplasia with ichthyosiform nevus and limb defects), an X-linked, male lethal disorder, as well as the mouse mutations bare patches and striated.(PMID: 14506130).

Notable Publications

Author	Pubmed ID	Journal	Application
Linara Gabitova-Cornell	32976774	Cancer Cell	WB
Linara Gabitova	26344763	Cell Rep	WB, IHC
Weibiao Kang	36381317	Am J Cancer Res	WB

Storage

Storage:
Store at -20°C. Stable for one year after shipment.
Storage Buffer:
PBS with 0.02% sodium azide and 50% glycerol pH 7.3.
Aliquoting is unnecessary for -20°C storage

*** 20ul sizes contain 0.1% BSA

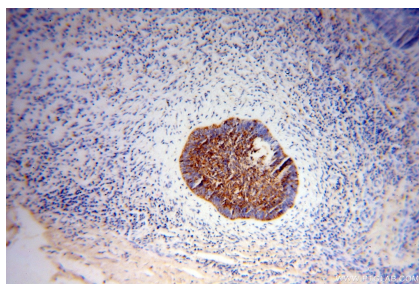
For technical support and original validation data for this product please contact:
T: 1 (888) 4PTGLAB (1-888-478-4522) (toll free in USA), or 1(312) 455-8498 (outside USA)
E: proteintech@ptglab.com
W: ptglab.com

This product is exclusively available under Proteintech Group brand and is not available to purchase from any other manufacturer.

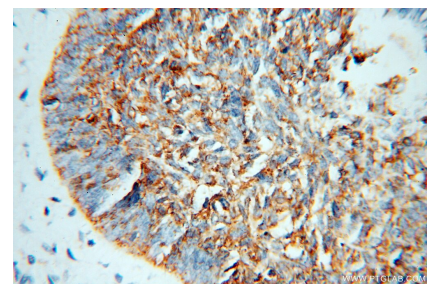
Selected Validation Data



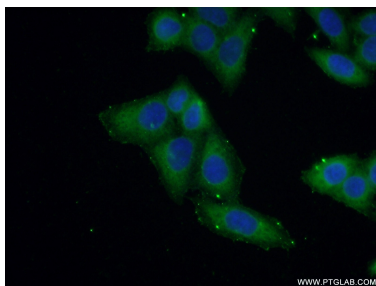
HeLa cells were subjected to SDS PAGE followed by western blot with 15111-1-AP (NSDHL antibody) at dilution of 1:500 incubated at room temperature for 1.5 hours.



Immunohistochemical analysis of paraffin-embedded human skin cancer using 15111-1-AP (NSDHL antibody) at dilution of 1:100 (under 10x lens).



Immunohistochemical analysis of paraffin-embedded human skin cancer using 15111-1-AP (NSDHL antibody) at dilution of 1:100 (under 40x lens).



Immunofluorescent analysis of (-20°C Ethanol) fixed HeLa cells using 15111-1-AP (NSDHL antibody) at dilution of 1:50 and Alexa Fluor 488-conjugated AffiniPure Goat Anti-Rabbit IgG(H+L).