

For Research Use Only

# CAPRIN1 Polyclonal antibody

Catalog Number: 15112-1-AP

Featured Product

80 Publications



## Basic Information

### Catalog Number:

15112-1-AP

### Size:

150ul, Concentration: 600 ug/ml by Nanodrop;

### Source:

Rabbit

### Isotype:

IgG

### Immunogen Catalog Number:

AG7099

### GenBank Accession Number:

BC001731

### GeneID (NCBI):

4076

### UNIPROT ID:

Q14444

### Full Name:

cell cycle associated protein 1

### Calculated MW:

78 kDa

### Observed MW:

116 kDa

### Purification Method:

Antigen affinity purification

### Recommended Dilutions:

WB 1:5000-1:50000

IP 0.5-4.0 ug for 1.0-3.0 mg of total protein lysate

IHC 1:50-1:500

IF/ICC 1:200-1:800

## Applications

### Tested Applications:

WB, IHC, IF/ICC, FC (Intra), IP, ELISA

### Cited Applications:

WB, IHC, IF, IP, CoIP, RIP

### Species Specificity:

human, mouse, rat

### Cited Species:

human, mouse, rat, pig, rabbit, canine, zebrafish

**Note-IHC: suggested antigen retrieval with TE buffer pH 9.0; (\*) Alternatively, antigen retrieval may be performed with citrate buffer pH 6.0**

### Positive Controls:

**WB** : HEK-293 cells, mouse brain tissue, HEK-293T cells, HeLa cells, NIH/3T3 cells, rat brain tissue, Jurkat cells

**IP** : HeLa cells,

**IHC** : human breast cancer tissue, human prostate cancer tissue, human testis tissue, mouse testis tissue

**IF/ICC** : HeLa cells, sodium arsenite treated HeLa cells, HepG2 cells, OC2 cells, cochlear cryosections

## Background Information

CAPRIN1 (Caprin-1) is a cytoplasmic phosphoprotein which may regulate the transport and translation of mRNAs of proteins involved in synaptic plasticity in neurons and cell proliferation and migration in multiple cell types. Its levels, except in the brain, are tightly correlated with cellular proliferation. Suppression of expression of human Caprin-1 resulted in slowing of the proliferation rate, which suggests its essential for normal cellular proliferation.

## Notable Publications

Author	Pubmed ID	Journal	Application
Colin T Sheehan	36183834	J Biol Chem	WB
Silvia De Rubeis	24050404	Neuron	WB, IP
Brian D Freibaum	33502444	J Cell Biol	IF

## Storage

### Storage:

Store at -20°C. Stable for one year after shipment.

### Storage Buffer:

PBS with 0.02% sodium azide and 50% glycerol pH 7.3.

Aliquoting is unnecessary for -20°C storage

\*\*\* 20ul sizes contain 0.1% BSA

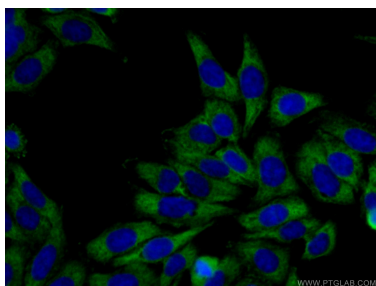
For technical support and original validation data for this product please contact:

T: 1 (888) 4PTGLAB (1-888-478-4522) (toll free in USA), or 1(312) 455-8498 (outside USA)

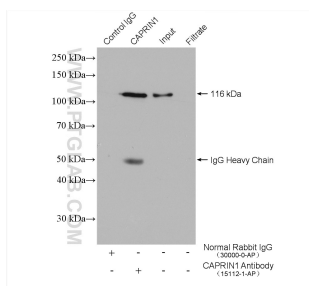
E: [proteintech@ptglab.com](mailto:proteintech@ptglab.com)  
W: [ptglab.com](http://ptglab.com)

This product is exclusively available under Proteintech Group brand and is not available to purchase from any other manufacturer.

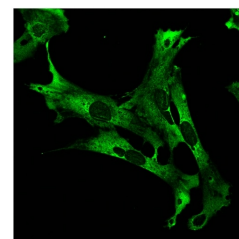
## Selected Validation Data



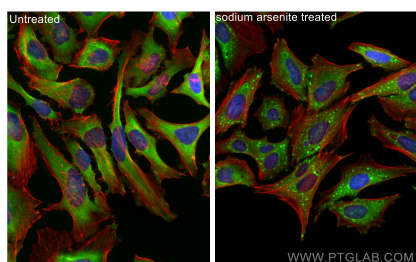
Immunofluorescent analysis of (-20°C Ethanol) fixed HepG2 cells using 15112-1-AP (CAPRIN1 antibody) at dilution of 1:50 and CoraLite488-Conjugated Goat Anti-Rabbit IgG(H+L).



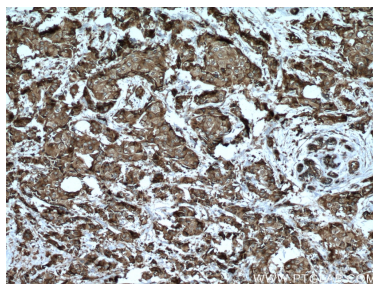
IP result of anti-CAPRIN1 (IP:15112-1-AP, 4ug; Detection:15112-1-AP 1:5000) with HeLa cells lysate 1600 ug.



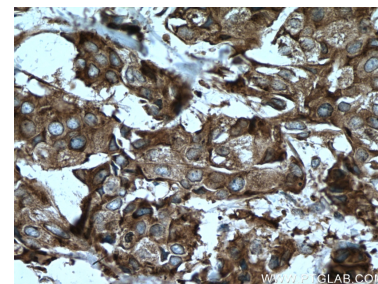
IF result of anti-CAPRIN1 (15112-1-AP, 1:200) with OC2 cells by Dr. Emily Towers.



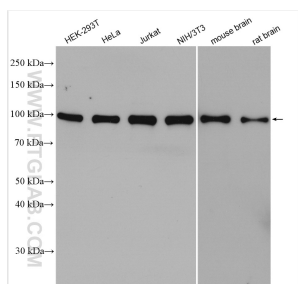
Immunofluorescent analysis of (4% PFA) fixed sodium arsenite treated HeLa cells using CAPRIN1 antibody (15112-1-AP) at dilution of 1:200 and CoraLite488-Conjugated Goat Anti-Rabbit IgG(H+L), CL594-Phalloidin (red).



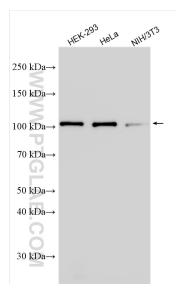
Immunohistochemical analysis of paraffin-embedded human breast cancer tissue slide using 15112-1-AP (CAPRIN1 antibody) at dilution of 1:200 (under 10x lens). Heat mediated antigen retrieval with Tris-EDTA buffer (pH 9.0).



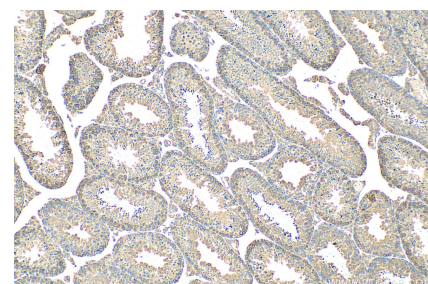
Immunohistochemical analysis of paraffin-embedded human breast cancer tissue slide using 15112-1-AP (CAPRIN1 antibody) at dilution of 1:200 (under 40x lens). Heat mediated antigen retrieval with Tris-EDTA buffer (pH 9.0).



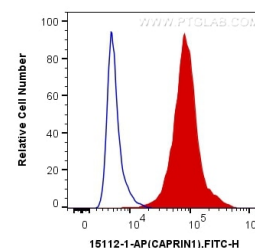
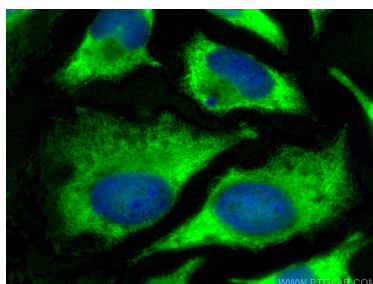
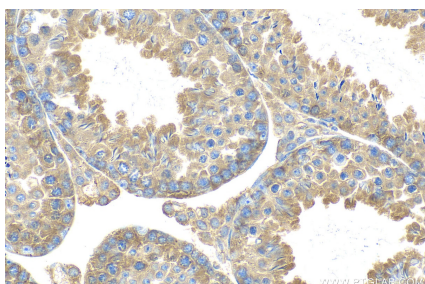
Various lysates were subjected to SDS PAGE followed by western blot with 15112-1-AP (CAPRIN1 antibody) at dilution of 1:10000 incubated at room temperature for 1.5 hours.



Various lysates were subjected to SDS PAGE followed by western blot with 15112-1-AP (CAPRIN1 antibody) at dilution of 1:25000 incubated at room temperature for 1.5 hours.



Immunohistochemical analysis of paraffin-embedded mouse testis tissue slide using 15112-1-AP (CAPRIN1 antibody) at dilution of 1:400 (under 10x lens). Heat mediated antigen retrieval with Tris-EDTA buffer (pH 9.0).



Immunohistochemical analysis of paraffin-embedded mouse testis tissue slide using 15112-1-AP (CAPRIN1 antibody) at dilution of 1:400 (under 40x lens). Heat mediated antigen retrieval with Tris-EDTA buffer (pH 9.0).

Immunofluorescent analysis of (-20°C Methanol) fixed HeLa cells using CAPRIN1 antibody (15112-1-AP) at dilution of 1:400 and CoraLite® 488-Conjugated Goat Anti-Rabbit IgG(H+L).

1X10<sup>6</sup> NIH/3T3 cells were intracellularly stained with 0.2 ug Anti-Human CAPRIN1 (15112-1-AP) and CoraLite® 488-Conjugated Goat Anti-Rabbit IgG(H+L) at dilution 1:1000 (red), or 0.2 ug Control Antibody. Cells were fixed with 4% PFA and permeabilized with Flow Cytometry Perm Buffer (PF00011-C).