

For Research Use Only

HCCS Polyclonal antibody

Catalog Number: 15118-1-AP **3 Publications**



Basic Information

Catalog Number: 15118-1-AP	GenBank Accession Number: BC001691	Purification Method: Antigen affinity purification
Size: 150ul , Concentration: 450 µg/ml by Nanodrop and 693 µg/ml by Bradford method using BSA as the standard;	GeneID (NCBI): 3052	Recommended Dilutions: WB 1:500-1:2400 IP 0.5-4.0 ug for IP and 1:500-1:1000 for WB
Source: Rabbit	Full Name: holocytochrome c synthase (cytochrome c heme-lyase)	IHC 1:100-1:400 IF 1:50-1:500
Isotype: IgG	Calculated MW: 31 kDa	
Immunogen Catalog Number: AG7189	Observed MW: 31 kDa	

Applications

Tested Applications: IF, IHC, IP, WB, ELISA	Positive Controls:
Cited Applications: WB	WB : human heart tissue, HeLa cells, MCF-7 cells
Species Specificity: human, mouse	IP : MCF-7 cells,
Cited Species: human, mouse	IHC : human breast cancer tissue, IF : HeLa cells,

Note-IHC: suggested antigen retrieval with TE buffer pH 9.0; (*) Alternatively, antigen retrieval may be performed with citrate buffer pH 6.0

Background Information

HCCS(Cytochrome c-type heme lyase) links covalently the heme group to the apoprotein of cytochrome C. The covalent attachment of heme by CCHL in the IMS is crucial for translocation of the precursor of cytochrome c and its trapping in the IMS(PMID:15359280).This protein has a calculated molecular mass of about 31 KDa.

Notable Publications

Author	Pubmed ID	Journal	Application
Bin Feng	32999148	Chem Pharm Bull (Tokyo)	WB
Alexandre Janer	27390132	EMBO Mol Med	WB
Elias Adriaenssens	36690850	Nat Cell Biol	WB

Storage

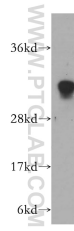
Storage:
Store at -20°C. Stable for one year after shipment.
Storage Buffer:
PBS with 0.02% sodium azide and 50% glycerol pH 7.3.
Aliquoting is unnecessary for -20°C storage

***** 20ul sizes contain 0.1% BSA**

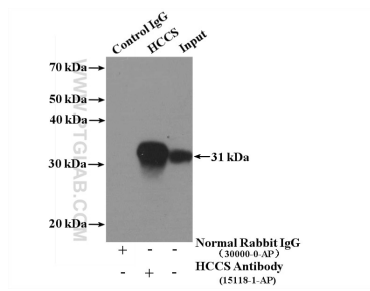
For technical support and original validation data for this product please contact:
T: 1 (888) 4PTGLAB (1-888-478-4522) (toll free in USA), or 1(312) 455-8498 (outside USA) E: proteintech@ptglab.com W: ptglab.com

This product is exclusively available under Proteintech Group brand and is not available to purchase from any other manufacturer.

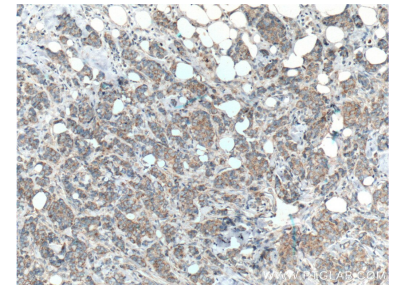
Selected Validation Data



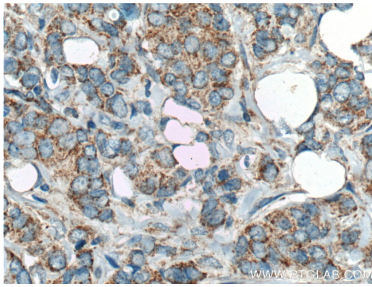
human heart tissue were subjected to SDS PAGE followed by western blot with 15118-1-AP (HCCS antibody) at dilution of 1:500 incubated at room temperature for 1.5 hours.



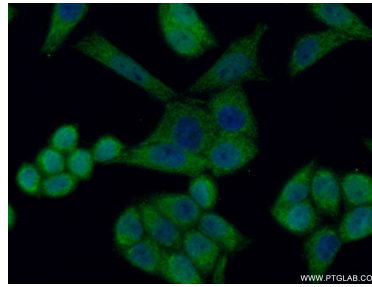
IP Result of anti-HCCS (IP:15118-1-AP, 4ug; Detection:15118-1-AP 1:500) with MCF-7 cells lysate 3200ug.



Immunohistochemical analysis of paraffin-embedded human breast cancer tissue slide using 15118-1-AP (HCCS Antibody) at dilution of 1:200 (under 10x lens). Heat mediated antigen retrieval with Tris-EDTA buffer (pH 9.0).



Immunohistochemical analysis of paraffin-embedded human breast cancer tissue slide using 15118-1-AP (HCCS Antibody) at dilution of 1:200 (under 40x lens). Heat mediated antigen retrieval with Tris-EDTA buffer (pH 9.0).



Immunofluorescent analysis of (4% PFA) fixed HeLa cells using 15118-1-AP (HCCS antibody) at dilution of 1:50 and Alexa Fluor 488-conjugated AffiniPure Goat Anti-Rabbit IgG(H+L).