

For Research Use Only

SCAMP2 Polyclonal antibody

Catalog Number: 15119-1-AP

1 Publications



Basic Information

Catalog Number:

15119-1-AP

Size:

150ul, Concentration: 600 ug/ml by Nanodrop and 253 ug/ml by Bradford method using BSA as the standard;

Source:

Rabbit

Isotype:

IgG

Immunogen Catalog Number:

AG7190

GenBank Accession Number:

BC001376

GeneID (NCBI):

10066

UNIPROT ID:

O15127

Full Name:

secretory carrier membrane protein 2

Calculated MW:

37 kDa

Observed MW:

39 kDa

Purification Method:

Antigen affinity purification

Recommended Dilutions:

WB 1:500-1:3000

IP 0.5-4.0 ug for 1.0-3.0 mg of total protein lysate

IHC 1:20-1:200

IF/ICC 1:50-1:500

Applications

Tested Applications:

WB, IHC, IF/ICC, FC (Intra), IP, ELISA

Cited Applications:

WB

Species Specificity:

human, mouse, rat

Cited Species:

human

Note-IHC: suggested antigen retrieval with TE buffer pH 9.0; (*) Alternatively, antigen retrieval may be performed with citrate buffer pH 6.0

Positive Controls:

WB : HepG2 cells, HeLa cells, human liver tissue, mouse lung tissue

IP : HepG2 cells,

IHC : human pancreas cancer tissue,

IF/ICC : HEK-293 cells,

Background Information

SCAMP2 functions in post-Golgi recycling pathways. It acts as a recycling carrier to the cell surface. It couples Arf6-stimulated PLD activity to exocytosis and links this process to formation of fusion pores. SCAMP2 is marker for secretory vesicles and tobacco BY-2 cells as a model system. The MW of SCAMP2 is 36-39 kDa with modification.

Notable Publications

Author	Pubmed ID	Journal	Application
Feiyu Mao	33493138	Aging (Albany NY)	WB

Storage

Storage:

Store at -20°C. Stable for one year after shipment.

Storage Buffer:

PBS with 0.02% sodium azide and 50% glycerol pH 7.3.

Aliquoting is unnecessary for -20°C storage

*** 20ul sizes contain 0.1% BSA

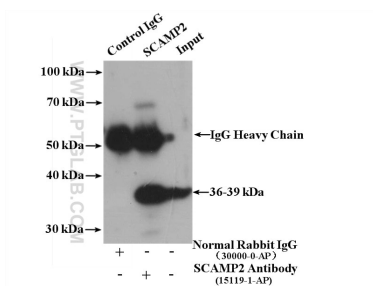
For technical support and original validation data for this product please contact:

T: 1 (888) 4PTGLAB (1-888-478-4522) (toll free in USA), or 1(312) 455-8498 (outside USA)

E: proteintech@ptglab.com
W: ptglab.com

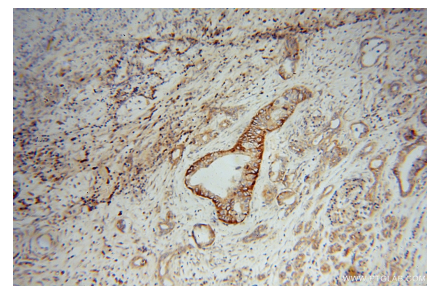
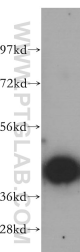
This product is exclusively available under Proteintech Group brand and is not available to purchase from any other manufacturer.

Selected Validation Data

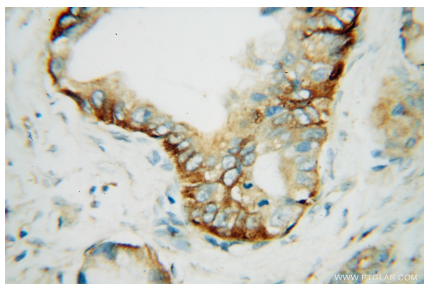


IP result of anti-SCAMP2 (IP:15119-1-AP, 4 μ g; Detection:15119-1-AP 1:500) with HepG2 cells lysate 3300 μ g.

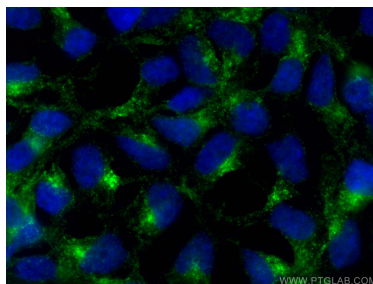
HepG2 cells were subjected to SDS PAGE followed by western blot with 15119-1-AP (SCAMP2 antibody) at dilution of 1:500 incubated at room temperature for 1.5 hours.



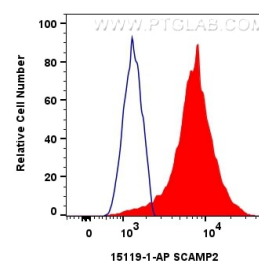
Immunohistochemical analysis of paraffin-embedded human pancreas cancer using 15119-1-AP (SCAMP2 antibody) at dilution of 1:100 (under 10x lens).



Immunohistochemical analysis of paraffin-embedded human pancreas cancer using 15119-1-AP (SCAMP2 antibody) at dilution of 1:100 (under 40x lens).



Immunofluorescent analysis of (4% PFA) fixed HEK-293 cells using SCAMP2 antibody (15119-1-AP) at dilution of 1:200 and CoraLite®488-Conjugated Goat Anti-Rabbit IgG(H+L).



1x10⁶ HEK-293 cells were intracellularly stained with 0.4 μ g SCAMP2 Polyclonal antibody (15119-1-AP) and CoraLite®488-Conjugated Goat Anti-Rabbit IgG(H+L) (SA00013-2)(red), or 0.4 μ g Rabbit IgG control Rabbit PolyAb (30000-0-AP) (blue). Cells were fixed with 4% PFA and permeabilized with Flow Cytometry Perm Buffer (PF00011-C).