

For Research Use Only

METTL9 Polyclonal antibody

Catalog Number: 15120-1-AP

Featured Product

2 Publications



Basic Information

Catalog Number: 15120-1-AP	GenBank Accession Number: BC000195	Purification Method: Antigen affinity purification
Size: 150ul , Concentration: 550 µg/ml by Nanodrop;	GeneID (NCBI): 51108	Recommended Dilutions: WB 1:500-1:2000 IHC 1:50-1:500 IF 1:20-1:200
Source: Rabbit	Full Name: methyltransferase like 9	
Isotype: IgG	Calculated MW: 37 kDa	
Immunogen Catalog Number: AG7191	Observed MW: 40-45 kDa	

Applications

Tested Applications: IF, IHC, WB, ELISA	Positive Controls: WB : HeLa cells, HEK-293 cells IHC : human liver cancer tissue, IF : HepG2 cells,
Cited Applications: IHC, WB	
Species Specificity: human, mouse, rat	
Cited Species: human	

Note-IHC: suggested antigen retrieval with TE buffer pH 9.0; (*) Alternatively, antigen retrieval may be performed with citrate buffer pH 6.0

Background Information

METTL9 is a broad-specificity methyltransferase that mediates the formation of the majority of 1-methylhistidine(1MH) present in mouse and human proteomes.

Notable Publications

Author	Pubmed ID	Journal	Application
Toshifumi Hara	35402738	Biochem Biophys Rep	WB
Fangfang Bi	38017014	Cell Death Discov	WB,IHC

Storage

Storage:
Store at -20°C. Stable for one year after shipment.
Storage Buffer:
PBS with 0.02% sodium azide and 50% glycerol pH 7.3.
Aliquoting is unnecessary for -20°C storage

*** 20ul sizes contain 0.1% BSA

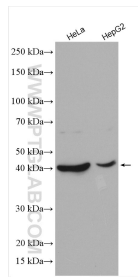
For technical support and original validation data for this product please contact:

T: 1 (888) 4PTGLAB (1-888-478-4522) (toll free in USA), or 1(312) 455-8498 (outside USA)

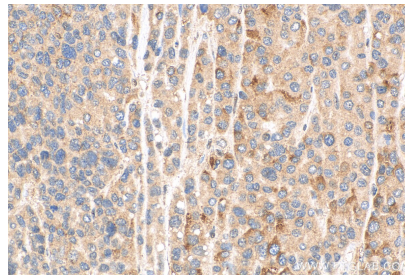
E: proteintech@ptglab.com
W: ptglab.com

This product is exclusively available under Proteintech Group brand and is not available to purchase from any other manufacturer.

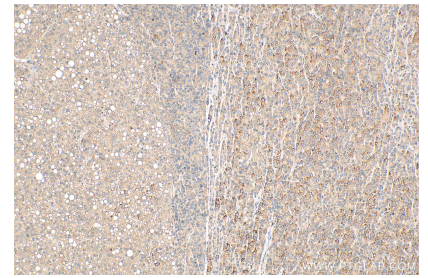
Selected Validation Data



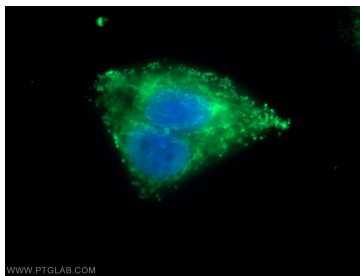
Various lysates were subjected to SDS PAGE followed by western blot with 15120-1-AP (METTL9 antibody) at dilution of 1:1000 incubated at room temperature for 1.5 hours.



Immunohistochemical analysis of paraffin-embedded human liver cancer tissue slide using 15120-1-AP (METTL9 antibody) at dilution of 1:200 (under 40x lens). Heat mediated antigen retrieval with Tris-EDTA buffer (pH 9.0).



Immunohistochemical analysis of paraffin-embedded human liver cancer tissue slide using 15120-1-AP (METTL9 antibody) at dilution of 1:200 (under 10x lens). Heat mediated antigen retrieval with Tris-EDTA buffer (pH 9.0).



Immunofluorescent analysis of HepG2 cells using 15120-1-AP (METTL9 antibody) at dilution of 1:50 and Alexa Fluor 488-conjugated AffiniPure Goat Anti-Rabbit IgG(H+L).