

For Research Use Only

# GP73/GOLPH2 Polyclonal antibody

Catalog Number: 15126-1-AP

Featured Product

15 Publications



## Basic Information

### Catalog Number:

15126-1-AP

### Size:

150ul, Concentration: 1000 ug/ml by Nanodrop;

### Source:

Rabbit

### Isotype:

IgG

### Immunogen Catalog Number:

AG7207

### GenBank Accession Number:

BC001740

### GeneID (NCBI):

51280

### UNIPROT ID:

Q8NBJ4

### Full Name:

golgi membrane protein 1

### Calculated MW:

45 kDa

### Observed MW:

70-75 kDa

### Purification Method:

Antigen affinity purification

### Recommended Dilutions:

WB 1:1000-1:6000

IP 0.5-4.0 ug for 1.0-3.0 mg of total protein lysate

IHC 1:400-1:1600

IF/ICC 1:200-1:800

## Applications

### Tested Applications:

WB, IHC, IF/ICC, IP, ELISA

### Cited Applications:

WB, IHC, IF

### Species Specificity:

human

### Cited Species:

human, mouse

### Positive Controls:

WB : LNCaP cells, HuH-7 cells, MDA-MB-231 cells, HepG2 cells

IP : HeLa cells,

IHC : human stomach cancer tissue, human liver cancer tissue, human stomach tissue

IF/ICC : HeLa cells,

**Note-IHC: suggested antigen retrieval with TE buffer pH 9.0; (\*) Alternatively, antigen retrieval may be performed with citrate buffer pH 6.0**

## Background Information

Golgi phosphoprotein 2 (GOLPH2, also known as GP73 or GOLM1) is a resident Golgi type-II membrane protein. It is predominantly expressed in the epithelial cells of many human tissues. GOLPH2 traffics through endosomes and can be secreted into the circulation. Its expression is upregulated in a number of tumors and GOLPH2 could be a promising serum marker for hepatocellular carcinoma. We got 70-75 kDa in western blotting due to phosphorylation.

## Notable Publications

Author	Pubmed ID	Journal	Application
Yan Lin	36211823	Oxid Med Cell Longev	IHC
Xuewu Zhang	27697522	Biochem Biophys Res Commun	WB,IF
T Wang	24720891	Curr Alzheimer Res	

## Storage

### Storage:

Store at -20°C. Stable for one year after shipment.

### Storage Buffer:

PBS with 0.02% sodium azide and 50% glycerol pH 7.3.

Aliquoting is unnecessary for -20°C storage

\*\*\* 20ul sizes contain 0.1% BSA

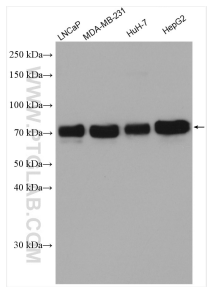
For technical support and original validation data for this product please contact:

T: 1 (888) 4PTGLAB (1-888-478-4522) (toll free in USA), or 1(312) 455-8498 (outside USA)

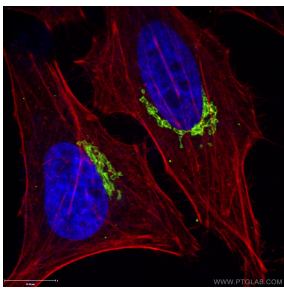
E: [proteintech@ptglab.com](mailto:proteintech@ptglab.com)  
W: [ptglab.com](http://ptglab.com)

This product is exclusively available under Proteintech Group brand and is not available to purchase from any other manufacturer.

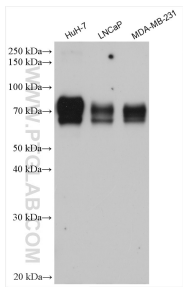
Selected Validation Data



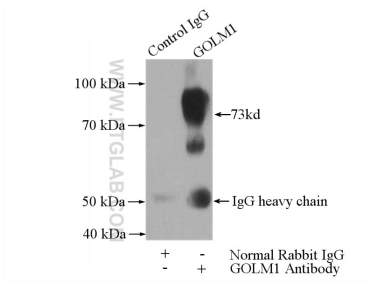
Various lysates were subjected to SDS PAGE followed by western blot with 15126-1-AP (GP73/GOLPH2 antibody) at dilution of 1:4000 incubated at room temperature for 1.5 hours.



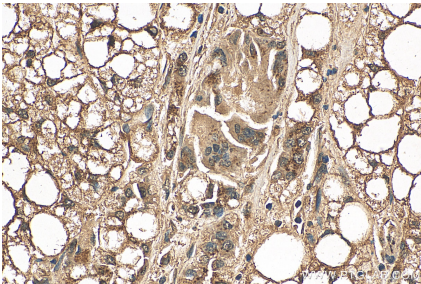
Immunofluorescent analysis of (4% PFA) fixed HeLa cells using 15126-1-AP (GP73/GOLPH2 antibody), at dilution of 1:400 and CoraLite®488-Conjugated AffiniPure Goat Anti-Rabbit IgG(H+L). The cytoskeleton and nuclei were stained with CL594-phalloidin and DAPI, respectively.



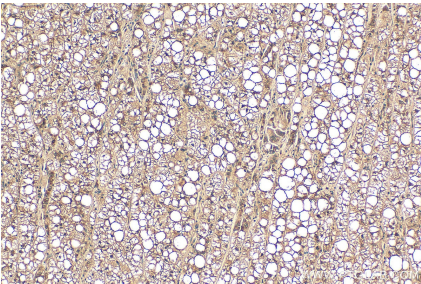
Various lysates were subjected to SDS PAGE followed by western blot with 15126-1-AP (GP73/GOLPH2 antibody) at dilution of 1:20000 incubated at room temperature for 1.5 hours.



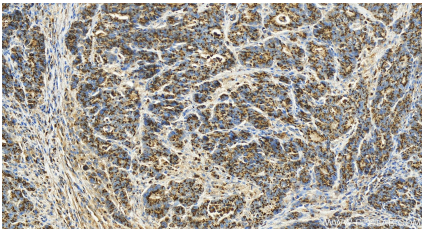
IP result of anti-GP73/GOLPH2 (IP:15126-1-AP, 4ug; Detection:15126-1-AP 1:1000) with HeLa cells lysate 2800ug.



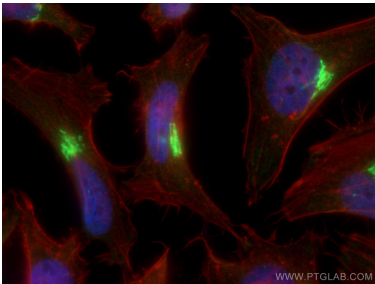
Immunohistochemical analysis of paraffin-embedded human liver cancer tissue slide using 15126-1-AP (GP73/GOLPH2 antibody) at dilution of 1:200 (under 40x lens). Heat mediated antigen retrieval with Tris-EDTA buffer (pH 9.0).



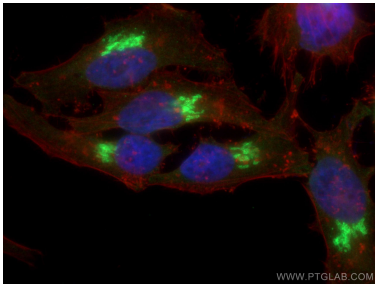
Immunohistochemical analysis of paraffin-embedded human liver cancer tissue slide using 15126-1-AP (GP73/GOLPH2 antibody) at dilution of 1:200 (under 10x lens). Heat mediated antigen retrieval with Tris-EDTA buffer (pH 9.0).



Immunohistochemical analysis of paraffin-embedded human stomach cancer tissue slide using 15126-1-AP (GP73/GOLPH2 antibody) at dilution of 1:800 (under 20x lens). Heat mediated antigen retrieval with Tris-EDTA buffer (pH 9.0).



Immunofluorescent analysis of (4% PFA) fixed HeLa cells using GP73/GOLPH2 antibody (15126-1-AP) at dilution of 1:1800 and CoraLite®488-Conjugated AffiniPure Goat Anti-Rabbit IgG(H+L), CL594-Phalloidin (red).



Immunofluorescent analysis of (4% PFA) fixed HeLa cells using GP73/GOLPH2 antibody (15126-1-AP) at dilution of 1:2000 and CoraLite®488-Conjugated AffiniPure Goat Anti-Rabbit IgG(H+L), CL594-Phalloidin (red).