

For Research Use Only

HSCB Polyclonal antibody

Catalog Number: 15132-1-AP **3 Publications**



Basic Information

Catalog Number: 15132-1-AP	GenBank Accession Number: BC065569	Purification Method: Antigen affinity purification
Size: 150ul , Concentration: 313 µg/ml by Bradford method using BSA as the standard;	GeneID (NCBI): 150274	Recommended Dilutions: WB 1:200-1:1000 IHC 1:20-1:200
Source: Rabbit	Full Name: HscB iron-sulfur cluster co-chaperone homolog (E. coli)	
Isotype: IgG	Calculated MW: 27 kDa	
Immunogen Catalog Number: AG7268	Observed MW: 27-30 kDa	

Applications

Tested Applications: IHC, WB, ELISA	Positive Controls: WB : rat liver tissue, IHC : human colon cancer tissue,
Cited Applications: WB	
Species Specificity: human, rat	
Cited Species: human	
Note-IHC: suggested antigen retrieval with TE buffer pH 9.0; (*) Alternatively, antigen retrieval may be performed with citrate buffer pH 6.0	

Background Information

HSCB, also named as HSC20 and DNAJC20, acts as a co-chaperone in iron-sulfur cluster assembly in mitochondria.

Notable Publications

Author	Pubmed ID	Journal	Application
Mohamed Alalem	36077724	Cancers (Basel)	WB
Xiaojian Shi	38157846	Mol Cell	WB
Yuyang Liu	37917749	Science	WB

Storage

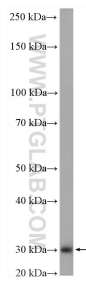
Storage:
Store at -20°C. Stable for one year after shipment.
Storage Buffer:
PBS with 0.02% sodium azide and 50% glycerol pH 7.3.
Aliquoting is unnecessary for -20°C storage

*** 20ul sizes contain 0.1% BSA

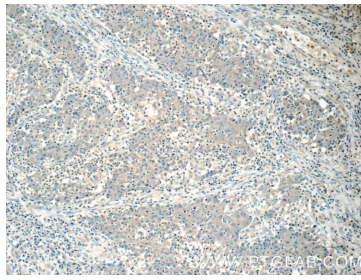
For technical support and original validation data for this product please contact:
T: 1 (888) 4PTGLAB (1-888-478-4522) (toll free in USA), or 1(312) 455-8498 (outside USA)
E: proteintech@ptglab.com
W: ptglab.com

This product is exclusively available under Proteintech Group brand and is not available to purchase from any other manufacturer.

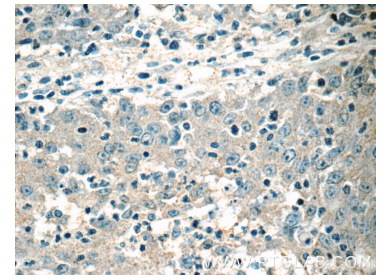
Selected Validation Data



rat liver tissue were subjected to SDS PAGE followed by western blot with 15132-1-AP (HSCB antibody) at dilution of 1:300 incubated at room temperature for 1.5 hours.



Immunohistochemical analysis of paraffin-embedded human colon cancer tissue slide using 15132-1-AP (HSCB Antibody) at dilution of 1:50 (under 10x lens).



Immunohistochemical analysis of paraffin-embedded human colon cancer tissue slide using 15132-1-AP (HSCB Antibody) at dilution of 1:50 (under 40x lens).