

For Research Use Only

NME3 Polyclonal antibody

Catalog Number: 15136-1-AP

Featured Product

1 Publications



Basic Information

Catalog Number:

15136-1-AP

Size:

150ul, Concentration: 350 ug/ml by Nanodrop and 213 ug/ml by Bradford method using BSA as the standard;

Source:

Rabbit

Isotype:

IgG

Immunogen Catalog Number:

AG7284

GenBank Accession Number:

BC000250

GeneID (NCBI):

4832

UNIPROT ID:

Q13232

Full Name:

non-metastatic cells 3, protein expressed in

Calculated MW:

19 kDa

Observed MW:

18 kDa

Purification Method:

Antigen affinity purification

Recommended Dilutions:

WB 1:500-1:2000

IP 0.5-4.0 ug for 1.0-3.0 mg of total protein lysate

IHC 1:50-1:500

IF/ICC 1:200-1:800

Applications

Tested Applications:

WB, IHC, IF/ICC, IP, ELISA

Cited Applications:

WB, IF

Species Specificity:

human, mouse, rat

Cited Species:

human, zebrafish

Note-IHC: suggested antigen retrieval with TE buffer pH 9.0; (*) Alternatively, antigen retrieval may be performed with citrate buffer pH 6.0

Positive Controls:

WB : HEK-293 cells, MCF-7 cells, mouse kidney tissue, K-562 cells

IP : HEK-293 cells,

IHC : human breast cancer tissue,

IF/ICC : HeLa cells, MCF-7 cells

Background Information

NME3 (NME/NM23 Nucleoside Diphosphate Kinase 3), also named as NM23-H3; DR-NM23, is a member of the nucleoside diphosphate kinase (NDPK) family that binds to the mitochondrial outer membrane to stimulate mitochondrial fusion. The depletion of NME3 will cause dysfunction in mitochondrial dynamics. NME3 has been found to facilitate DNA-repair mechanisms binds to several NPHPs, including NEK8, CEP164, and ankyrin repeat and sterile a motif domain-containing 6 (ANKS6).

Notable Publications

| Author | Pubmed ID | Journal | Application |
|-------------|-----------|-------------|-------------|
| Sylvia Hoff | 30111592 | J Biol Chem | IF, WB |

Storage

Storage:

Store at -20°C. Stable for one year after shipment.

Storage Buffer:

PBS with 0.02% sodium azide and 50% glycerol pH 7.3.

Aliquoting is unnecessary for -20°C storage

*** 20ul sizes contain 0.1% BSA

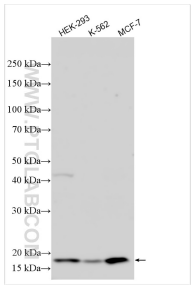
For technical support and original validation data for this product please contact:

T: 1 (888) 4PTGLAB (1-888-478-4522) (toll free in USA), or 1(312) 455-8498 (outside USA)

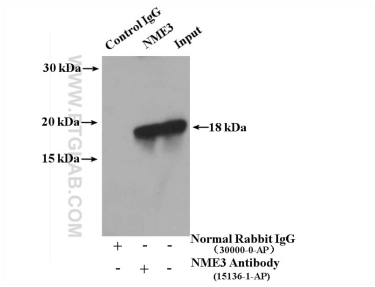
E: proteintech@ptglab.com
W: ptglab.com

This product is exclusively available under Proteintech Group brand and is not available to purchase from any other manufacturer.

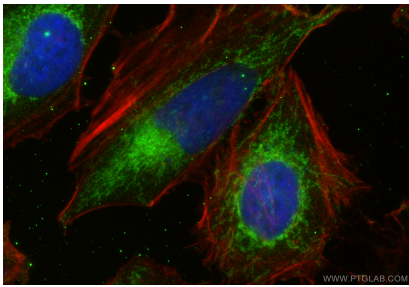
Selected Validation Data



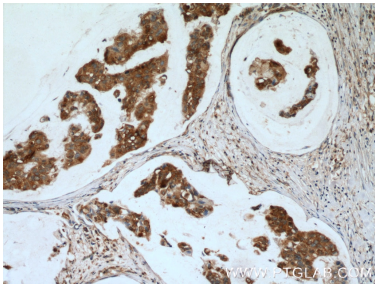
Various lysates were subjected to SDS PAGE followed by western blot with 15136-1-AP (NME3 antibody) at dilution of 1:1000 incubated at room temperature for 1.5 hours.



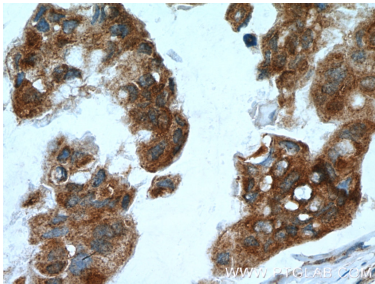
IP result of anti-NME3 (IP:15136-1-AP, 4ug; Detection:15136-1-AP 1:300) with HEK-293 cells lysate 2400 ug.



Immunofluorescent analysis of (4% PFA) fixed HeLa cells using NME3 antibody (15136-1-AP) at dilution of 1:400 and Multi-rAb CoraLite® Plus 488-Goat Anti-Rabbit Recombinant Secondary Antibody (H+L) (RGAR002), CL594-Phalloidin (red).



Immunohistochemical analysis of paraffin-embedded human breast cancer tissue slide using 15136-1-AP (NME3 Antibody) at dilution of 1:200 (under 10x lens). Heat mediated antigen retrieval with Tris-EDTA buffer (pH 9.0).



Immunohistochemical analysis of paraffin-embedded human breast cancer tissue slide using 15136-1-AP (NME3 Antibody) at dilution of 1:200 (under 40x lens). Heat mediated antigen retrieval with Tris-EDTA buffer (pH 9.0).