

For Research Use Only

RPAP1 Polyclonal antibody

Catalog Number: 15138-1-AP

Featured Product

2 Publications



Basic Information

Catalog Number: 15138-1-AP	GenBank Accession Number: BC000246	Purification Method: Antigen affinity purification
Size: 150ul , Concentration: 450 µg/ml by Nanodrop and 667 µg/ml by Bradford method using BSA as the standard;	GeneID (NCBI): 26015	Recommended Dilutions: WB 1:500-1:2000
Source: Rabbit	Full Name: RNA polymerase II associated protein 1	IP 0.5-4.0 ug for IP and 1:500-1:1000 for WB
Isotype: IgG	Calculated MW: 153 kDa	
Immunogen Catalog Number: AG7286	Observed MW: 153 kDa	

Applications

Tested Applications: IP, WB, ELISA	Positive Controls: WB : HEK-293 cells, HeLa cells, mouse brain tissue
Cited Applications: WB	IP : HeLa cells,
Species Specificity: human, mouse, rat	
Cited Species: human, mouse	

Background Information

RNA polymerase II-associated protein 1 (RPAP1) encodes a nuclear 153-kDa protein, and forms an interface between the RNA polymerase II (RNAPII) enzyme and chaperone/scaffolding protein, suggesting that it is required to connect RNA polymerase II to regulators of protein complex formation. RPAP1 is required for interaction of the RNA polymerase II complex with acetylated histone H3 and the subsequent DNA transcription.

Notable Publications

Author	Pubmed ID	Journal	Application
Isabel Pablos	34672947	Cell Rep	WB
Cian J Lynch	29320736	Cell Rep	WB

Storage

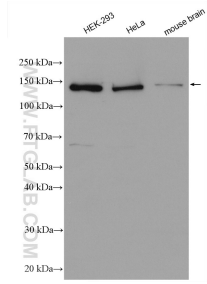
Storage:
Store at -20°C. Stable for one year after shipment.
Storage Buffer:
PBS with 0.02% sodium azide and 50% glycerol pH 7.3.
Aliquoting is unnecessary for -20°C storage

*** 20ul sizes contain 0.1% BSA

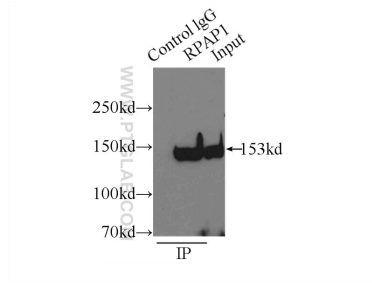
For technical support and original validation data for this product please contact:
T: 1 (888) 4PTGLAB (1-888-478-4522) (toll free in USA), or 1(312) 455-8498 (outside USA)
E: proteintech@ptglab.com
W: ptglab.com

This product is exclusively available under Proteintech Group brand and is not available to purchase from any other manufacturer.

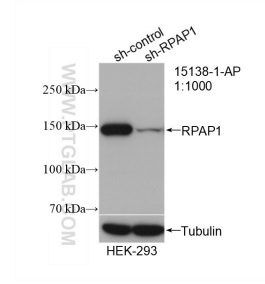
Selected Validation Data



Various lysates were subjected to SDS PAGE followed by western blot with 15138-1-AP (RPAP1 antibody) at dilution of 1:1000 incubated at room temperature for 1.5 hours.



IP Result of anti-RPAP1 (IP:15138-1-AP, 3ug; Detection:15138-1-AP 1:800) with HeLa cells lysate 3000ug.



WB result of RPAP1 antibody (15138-1-AP; 1:1000; incubated at room temperature for 1.5 hours) with sh-Control and sh-RPAP1 transfected HEK-293 cells.