

For Research Use Only

# GLO1 Polyclonal antibody, PBS Only

Catalog Number: 15140-1-PBS

Featured Product



## Basic Information

**Catalog Number:**

15140-1-PBS

**Size:**

100ug, Concentration: 1 mg/ml by Nanodrop;

**Source:**

Rabbit

**Isotype:**

IgG

**Immunogen Catalog Number:**

AG7314

**GenBank Accession Number:**

BC001741

**GeneID (NCBI):**

2739

**UNIPROT ID:**

Q04760

**Full Name:**

glyoxalase I

**Calculated MW:**

21 kDa

**Observed MW:**

21-25 kDa

**Purification Method:**

Antigen affinity purification

## Applications

**Tested Applications:**

WB, IHC, IP, Indirect ELISA

**Species Specificity:**

human, mouse, rat

## Background Information

Glo1 is known to play a role in many diseases including diabetes mellitus, Alzheimer's disease, and cancer. The molecular mass of the dimer was 46 kDa determined by gel permeation chromatography.

## Storage

**Storage:**

Store at -80°C.

**Storage Buffer:**

PBS only, pH7.3

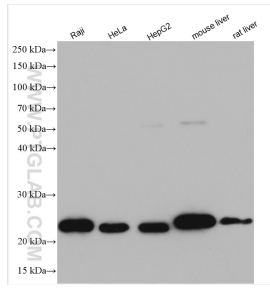
For technical support and original validation data for this product please contact:

T: 1 (888) 4PTGLAB (1-888-478-4522) (toll free in USA), or 1(312) 455-8498 (outside USA)

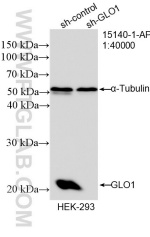
E: [proteintech@ptglab.com](mailto:proteintech@ptglab.com)  
W: [ptglab.com](http://ptglab.com)

This product is exclusively available under Proteintech Group brand and is not available to purchase from any other manufacturer.

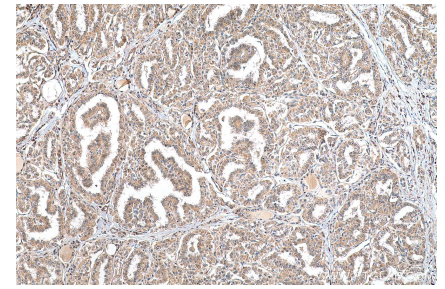
## Selected Validation Data



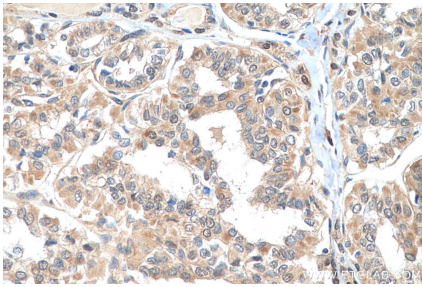
Various lysates were subjected to SDS PAGE followed by western blot with 15140-1-AP (GLO1 antibody) at dilution of 1:5000 incubated at room temperature for 1.5 hours. This data was developed using the same antibody clone with 15140-1-PBS in a different storage buffer formulation.



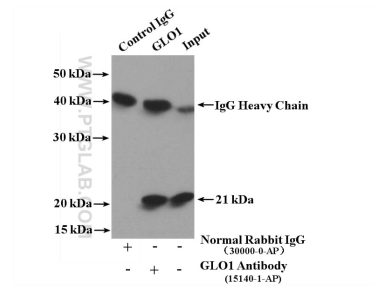
WB result of GLO1 antibody (15140-1-AP; 1:40000; incubated at room temperature for 1.5 hours) with sh-Control and sh-GLO1 transfected HEK-293 cells. This data was developed using the same antibody clone with 15140-1-PBS in a different storage buffer formulation.



Immunohistochemical analysis of paraffin-embedded human thyroid cancer tissue slide using 15140-1-AP (GLO1 antibody) at dilution of 1:8000 (under 10x lens). Heat mediated antigen retrieval with Tris-EDTA buffer (pH 9.0). This data was developed using the same antibody clone with 15140-1-PBS in a different storage buffer formulation.



Immunohistochemical analysis of paraffin-embedded human thyroid cancer tissue slide using 15140-1-AP (GLO1 antibody) at dilution of 1:8000 (under 40x lens). Heat mediated antigen retrieval with Tris-EDTA buffer (pH 9.0). This data was developed using the same antibody clone with 15140-1-PBS in a different storage buffer formulation.



IP result of anti-GLO1 (IP:15140-1-AP, 4ug; Detection:15140-1-AP 1:1000) with HepG2 cells lysate 1000ug. This data was developed using the same antibody clone with 15140-1-PBS in a different storage buffer formulation.