

For Research Use Only

PPIL1 Polyclonal antibody, PBS Only

Catalog Number: 15144-1-PBS



Basic Information

Catalog Number:

15144-1-PBS

Size:

100ug, Concentration: 1 mg/ml by Nanodrop;

Source:

Rabbit

Isotype:

IgG

Immunogen Catalog Number:

AG7436

GenBank Accession Number:

BC003048

GeneID (NCBI):

51645

UNIPROT ID:

Q9Y3C6

Full Name:

peptidylprolyl isomerase (cyclophilin)-like 1

Calculated MW:

18 kDa

Observed MW:

18 kDa

Purification Method:

Antigen affinity purification

Applications

Tested Applications:

WB, IHC, IF/ICC, IP, Indirect ELISA

Species Specificity:

human, mouse, rat

Background Information

Peptidyl-prolyl isomerase (PPIase) catalyzes the interconversion of a specific Pro-imide bond between the cis and trans conformations. PPIL1 (Peptidyl-prolyl cis-trans isomerase-like 1) is up-regulated in human colon cancer cells and an siRNA-mediated knockdown of PPIL1 resulted in a reduced number of viable cell (PMID: 20368803). Expression of PPIL1 was shown to be ubiquitous across all adult tissues (with highest expression in the adrenal gland, testis and heart). PPIL1 is also known to participate in the spliceosome; a complex and dynamic protein and RNA complex responsible for splicing introns from pre-mRNA (PMID: 33220177, 8978786).

Storage

Storage:

Store at -80°C.

Storage Buffer:

PBS only, pH7.3

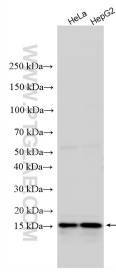
For technical support and original validation data for this product please contact:

T: 1 (888) 4PTGLAB (1-888-478-4522) (toll free in USA), or 1(312) 455-8498 (outside USA)

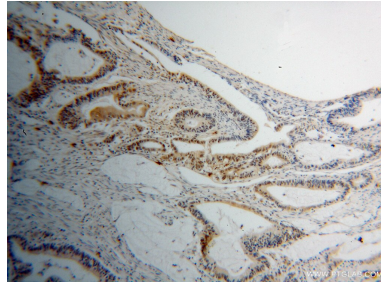
E: proteintech@ptglab.com
W: ptglab.com

This product is exclusively available under Proteintech Group brand and is not available to purchase from any other manufacturer.

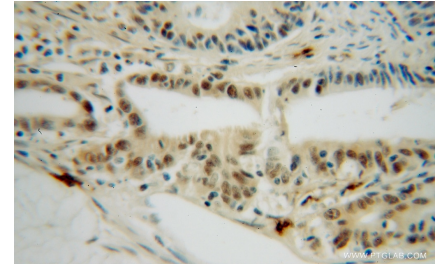
Selected Validation Data



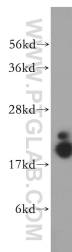
Various lysates were subjected to SDS PAGE followed by western blot with 15144-1-AP (PPIL1 antibody) at dilution of 1:2000 incubated at room temperature for 1.5 hours. This data was developed using the same antibody clone with 15144-1-PBS in a different storage buffer formulation.



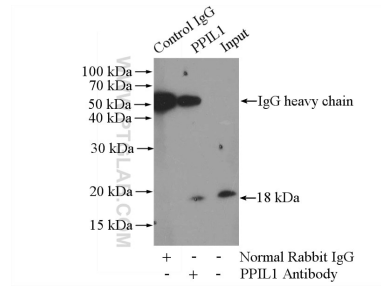
Immunohistochemical analysis of paraffin-embedded human colon cancer using 15144-1-AP (PPIL1 antibody) at dilution of 1:100 (under 10x lens). This data was developed using the same antibody clone with 15144-1-PBS in a different storage buffer formulation.



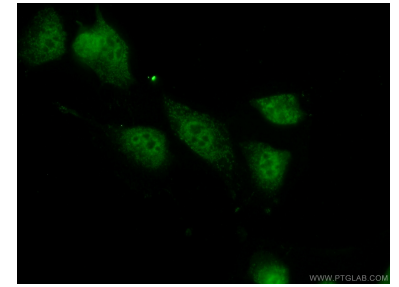
Immunohistochemical analysis of paraffin-embedded human colon cancer using 15144-1-AP (PPIL1 antibody) at dilution of 1:100 (under 40x lens). This data was developed using the same antibody clone with 15144-1-PBS in a different storage buffer formulation.



NIH/3T3 cells were subjected to SDS PAGE followed by western blot with 15144-1-AP (PPIL1 antibody) at dilution of 1:400 incubated at room temperature for 1.5 hours. This data was developed using the same antibody clone with 15144-1-PBS in a different storage buffer formulation.



IP result of anti-PPIL1 (IP:15144-1-AP, 3ug; Detection:15144-1-AP 1:400) with NIH/3T3 cells lysate 1600ug. This data was developed using the same antibody clone with 15144-1-PBS in a different storage buffer formulation.



Immunofluorescent analysis of (10% Formaldehyde) fixed NIH/3T3 cells using 15144-1-AP (PPIL1 antibody) at dilution of 1:50 and Alexa Fluor 488-conjugated AffiniPure Goat Anti-Rabbit IgG(H+L). This data was developed using the same antibody clone with 15144-1-PBS in a different storage buffer formulation.