

For Research Use Only

S100B Polyclonal antibody, PBS Only

Catalog Number: 15146-1-PBS



Basic Information

Catalog Number: 15146-1-PBS	GenBank Accession Number: BC001766	Purification Method: Antigen affinity purification
Size: 100ug, Concentration: 1 mg/ml by Nanodrop;	GeneID (NCBI): 6285	
Source: Rabbit	UNIPROT ID: P04271	
Isotype: IgG	Full Name: S100 calcium binding protein B	
Immunogen Catalog Number: AG7440	Calculated MW: 11 kDa	
	Observed MW: 11 kDa	

Applications

Tested Applications:
WB, IHC, IF/ICC, IF-P, FC (Intra), Indirect ELISA

Species Specificity:
human, mouse, rat

Background Information

S100B is a member of the S100 family of proteins containing 2 EF-hand calcium-binding motifs and has been implicated in the regulation of cellular activities such as metabolism, motility, and proliferation. In the nervous system, S100B is constitutively released by astrocytes into the extracellular space, and at nanomolar concentrations, it can promote neurite outgrowth and protect neurons against oxidative stress. Within the central nervous system (CNS), S100B is thought to be a marker for astroglial activation, linking astrocyte dysfunction to schizophrenia. In addition to astrocytes, S100B is released from many cell types, such as adipocytes, chondrocytes, cardiomyocytes, and lymphocytes. Serum S100B represents a new biomarker for mood disorders.

Storage

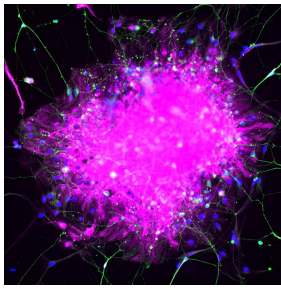
Storage:
Store at -80°C.

Storage Buffer:
PBS only, pH7.3

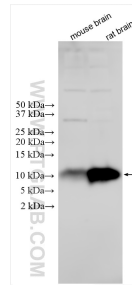
For technical support and original validation data for this product please contact:
T: 1 (888) 4PTGLAB (1-888-478-4522) (toll free in USA), or 1(312) 455-8498 (outside USA) E: proteintech@ptglab.com
W: ptglab.com

This product is exclusively available under Proteintech Group brand and is not available to purchase from any other manufacturer.

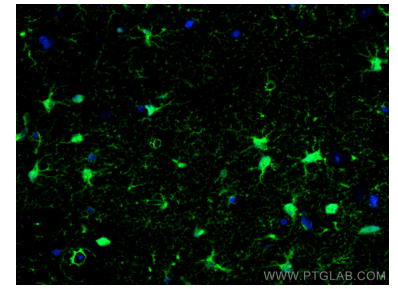
Selected Validation Data



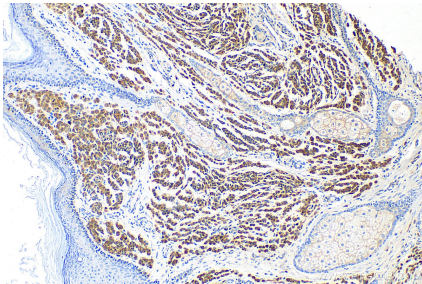
Immunofluorescence analysis of human pluripotent stem cell-derived astrocytes with S100 β (15146-1-AP) at 1/200 (Magenta) and neurons with TUJ1 (66375-1-Ig) at 1:500 (Green). The sample was fixed with 4% Paraformaldehyde and permeabilized with 0.3% Triton X-100. Alexa Fluor 488-conjugated goat anti-mouse IgG (1/500) and Alexa Fluor 594-conjugated goat anti-rabbit IgG (1/500) were used as the secondary antibodies. Nuclei were counterstained with



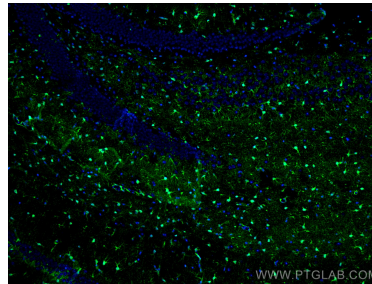
Various lysates were subjected to SDS PAGE followed by western blot with 15146-1-AP (S100B antibody) at dilution of 1:15000 incubated at room temperature for 1.5 hours. This data was developed using the same antibody clone with 15146-1-PBS in a different storage buffer formulation.



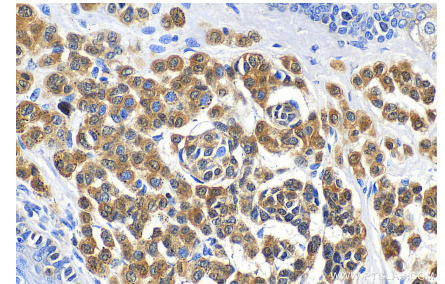
Immunofluorescent analysis of (4% PFA) fixed mouse brain tissue using S100 Beta antibody (15146-1-AP) at dilution of 1:200 and CoraLite $\text{\textcircled{R}}$ 488-Conjugated AffiniPure Goat Anti-Rabbit IgG(H+L). This data was developed using the same antibody clone with 15146-1-PBS in a different storage buffer formulation.



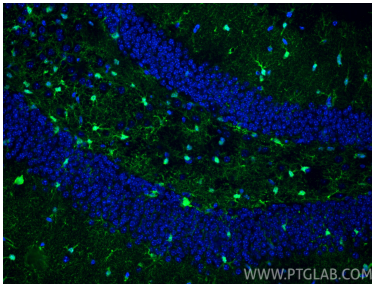
Immunohistochemical analysis of paraffin-embedded human malignant melanoma tissue slide using 15146-1-AP (S100 Beta antibody) at dilution of 1:6000 (under 10x lens). Heat mediated antigen retrieval with Tris-EDTA buffer (pH 9.0). This data was developed using the same antibody clone with 15146-1-PBS in a different storage buffer formulation.



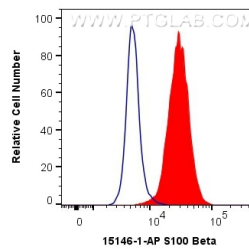
Immunofluorescent analysis of (4% PFA) fixed mouse brain tissue using S100 Beta antibody (15146-1-AP) at dilution of 1:200 and CoraLite $\text{\textcircled{R}}$ 488-Conjugated AffiniPure Goat Anti-Rabbit IgG(H+L). This data was developed using the same antibody clone with 15146-1-PBS in a different storage buffer formulation.



Immunohistochemical analysis of paraffin-embedded human malignant melanoma tissue slide using 15146-1-AP (S100 Beta antibody) at dilution of 1:6000 (under 40x lens). Heat mediated antigen retrieval with Tris-EDTA buffer (pH 9.0). This data was developed using the same antibody clone with 15146-1-PBS in a different storage buffer formulation.



Immunofluorescent analysis of (4% PFA) fixed paraffin-embedded mouse brain tissue using S100B antibody (15146-1-AP) at dilution of 1:200 and CoraLite $\text{\textcircled{R}}$ 488-Conjugated AffiniPure Goat Anti-Rabbit IgG(H+L) (SA00013-2). Heat mediated antigen retrieval with Tris-EDTA buffer (pH 9.0). This data was developed using the same antibody clone with 15146-1-PBS in a different storage buffer formulation.



1X10⁶ A375 cells were intracellularly stained with 0.5 μ g Anti-Human S100 Beta (15146-1-AP) and CoraLite $\text{\textcircled{R}}$ 488-Conjugated AffiniPure Goat Anti-Rabbit IgG(H+L) at dilution 1:1000 (red), or 0.5 μ g Control Antibody. Cells were fixed with 4% PFA and permeabilized with Flow Cytometry Perm Buffer (PF00011-C). This data was developed using the same antibody clone with 15146-1-PBS in a different storage buffer formulation.