

For Research Use Only

CEP68 Polyclonal antibody

Catalog Number: 15147-1-AP

Featured Product

6 Publications



Basic Information

Catalog Number:

15147-1-AP

Size:

150ul, Concentration: 350 µg/ml by Nanodrop and 153 µg/ml by Bradford method using BSA as the standard;

Source:

Rabbit

Isotype:

IgG

Immunogen Catalog Number:

AG7447

GenBank Accession Number:

BC002982

GeneID (NCBI):

23177

Full Name:

centrosomal protein 68kDa

Calculated MW:

81 kDa

Observed MW:

68 kDa

Purification Method:

Antigen affinity purification

Recommended Dilutions:

WB 1:1000-1:4000

Applications

Tested Applications:

WB, ELISA

Cited Applications:

IF, WB

Species Specificity:

human

Cited Species:

human

Positive Controls:

WB: SH-SY5Y cells, HeLa cells, Jurkat cells

Background Information

Notable Publications

Author	Pubmed ID	Journal	Application
Yuqing Xia	30404835	J Cell Sci	WB, IF
Elena Fdez	35721463	iScience	WB, IF
Delowar Hossain	34005155	J Cell Sci	WB, IF

Storage

Storage:

Store at -20°C. Stable for one year after shipment.

Storage Buffer:

PBS with 0.02% sodium azide and 50% glycerol pH 7.3.

Aliquoting is unnecessary for -20°C storage

*** 20ul sizes contain 0.1% BSA

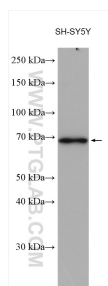
For technical support and original validation data for this product please contact:

T: 1 (888) 4PTGLAB (1-888-478-4522) (toll free in USA), or 1(312) 455-8498 (outside USA)

E: proteintech@ptglab.com
W: ptglab.com

This product is exclusively available under Proteintech Group brand and is not available to purchase from any other manufacturer.

Selected Validation Data



SH-SY5Y cells were subjected to SDS PAGE followed by western blot with 15147-1-AP (CEP68 antibody) at dilution of 1:2000 incubated at room temperature for 1.5 hours.