

For Research Use Only

KCNE1 Polyclonal antibody

Catalog Number: 15150-1-AP

2 Publications



Basic Information

Catalog Number:

15150-1-AP

Size:

150ul, Concentration: 300 ug/ml by Nanodrop and 133 ug/ml by Bradford method using BSA as the standard;

Source:

Rabbit

Isotype:

IgG

Immunogen Catalog Number:

AG3495

GenBank Accession Number:

BC036452

GeneID (NCBI):

3753

UNIPROT ID:

P15382

Full Name:

potassium voltage-gated channel, Isk-related family, member 1

Calculated MW:

15 kDa

Observed MW:

18-25 kDa, 28-35 kDa

Purification Method:

Antigen affinity purification

Recommended Dilutions:

WB 1:500-1:1000

IF 1:20-1:200

Applications

Tested Applications:

WB, IF, ELISA

Cited Applications:

WB

Species Specificity:

human, mouse, rat

Cited Species:

pig, rat

Positive Controls:

WB : mouse heart tissue, mouse testis tissue

IF : mouse heart tissue,

Notable Publications

Author	Pubmed ID	Journal	Application
Po-Cheng Chang	31772612	Cardiovasc Ther	WB
Yankun Lv	25857626	Br J Pharmacol	WB

Storage

Storage:

Store at -20°C. Stable for one year after shipment.

Storage Buffer:

PBS with 0.02% sodium azide and 50% glycerol pH 7.3.

Aliquoting is unnecessary for -20°C storage

*** 20ul sizes contain 0.1% BSA

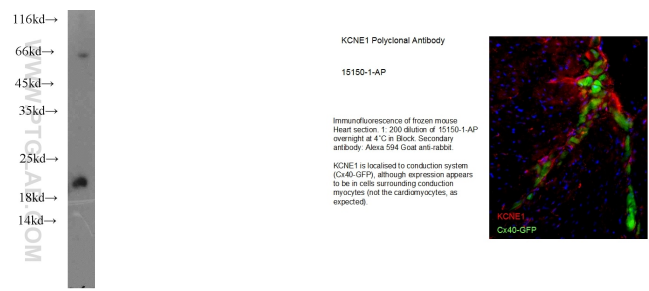
For technical support and original validation data for this product please contact:

T: 1 (888) 4PTGLAB (1-888-478-4522) (toll free in USA), or 1(312) 455-8498 (outside USA)

E: proteintech@ptglab.com
W: ptglab.com

This product is exclusively available under Proteintech Group brand and is not available to purchase from any other manufacturer.

Selected Validation Data



mouse heart tissue were subjected to SDS PAGE followed by western blot with 15150-1-AP (KCNE1 antibody) at dilution of 1:500 incubated at room temperature for 1.5 hours.

IF result of anti-KCNE1 (15150-1-AP) in frozen mouse heart section by Dr Nicola Smart.