

For Research Use Only

# MEN1 Polyclonal antibody

Catalog Number: 15159-1-AP



## Basic Information

<b>Catalog Number:</b> 15159-1-AP	<b>GenBank Accession Number:</b> BC002544	<b>Purification Method:</b> Antigen affinity purification
<b>Size:</b> 150ul , Concentration: 400 µg/ml by Nanodrop and 440 µg/ml by Bradford method using BSA as the standard;	<b>GeneID (NCBI):</b> 4221	<b>Recommended Dilutions:</b> WB 1:500-1:2000 IP 0.5-4.0 ug for IP and 1:500-1:1000 for WB
<b>Source:</b> Rabbit	<b>Full Name:</b> multiple endocrine neoplasia I	<b>IF 1:50-1:500</b>
<b>Isotype:</b> IgG	<b>Calculated MW:</b> 68 kDa	
<b>Immunogen Catalog Number:</b> AG7253	<b>Observed MW:</b> 63-70 kDa	

## Applications

<b>Tested Applications:</b> IF, IP, WB, ELISA	<b>Positive Controls:</b>
<b>Species Specificity:</b> human, Mouse, Rat	<b>WB :</b> HepG2 cells, HeLa cells, Jurkat cells
	<b>IP :</b> HEK-293 cells,
	<b>IF :</b> HeLa cells,

## Background Information

MEN1, also named as Menin or MEAI, is a tumor suppressor protein encoded by the MEN1 gene. Its inactivation has been implicated in tumors of many endocrine tissues. Germline inactivating mutations of MEN1 gene are the main cause of multiple endocrine neoplasia type 1 (MEN1), a syndrome characterized by tumors in the pituitary gland, the parathyroid glands, and the enteropancreatic neuroendocrine tissues. Recent study shows astroglia menin deficiency leads to depressive-like behaviors in mice

## Storage

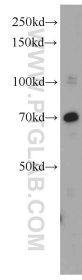
**Storage:**  
Store at -20°C. Stable for one year after shipment.  
**Storage Buffer:**  
PBS with 0.02% sodium azide and 50% glycerol pH 7.3.  
Aliquoting is unnecessary for -20°C storage

\*\*\* 20ul sizes contain 0.1% BSA

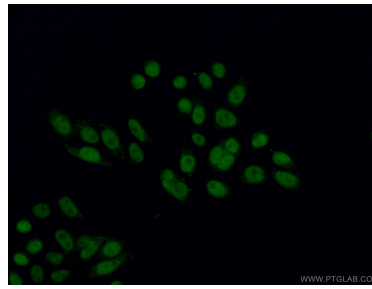
For technical support and original validation data for this product please contact:  
T: 1 (888) 4PTGLAB (1-888-478-4522) (toll free in USA), or 1(312) 455-8498 (outside USA)  
E: proteintech@ptglab.com  
W: ptglab.com

This product is exclusively available under Proteintech Group brand and is not available to purchase from any other manufacturer.

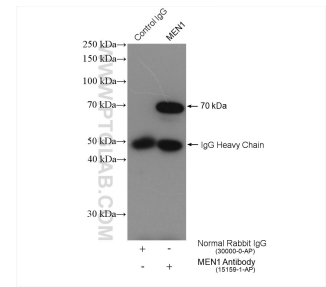
## Selected Validation Data



HepG2 cells were subjected to SDS PAGE followed by western blot with 15159-1-AP (MEN1 antibody) at dilution of 1:500 incubated at room temperature for 1.5 hours.



Immunofluorescent analysis of (4% PFA) fixed HeLa cells using 15159-1-AP (MEN1 antibody) at dilution of 1:50 and CoraLite488-Conjugated AffiniPure Goat Anti-Rabbit IgG(H+L).



IP result of anti-MEN1(IP:15159-1-AP, 4ug; Detection:15159-1-AP 1:500) with HEK-293 cells lysate 1320 ug.