

For Research Use Only

FEM1A Polyclonal antibody

Catalog Number: 15169-1-AP



Basic Information

Catalog Number: 15169-1-AP	GenBank Accession Number: BC004988	Purification Method: Antigen affinity purification
Size: 150ul , Concentration: 133 ug/ml by Bradford method using BSA as the standard;	GeneID (NCBI): 55527	Recommended Dilutions: WB 1:200-1:1000 IHC 1:20-1:200
Source: Rabbit	UNIPROT ID: Q9BSK4	
Isotype: IgG	Full Name: fem-1 homolog a (C. elegans)	
Immunogen Catalog Number: AG7357	Calculated MW: 74 kDa	
	Observed MW: 74 kDa	

Applications

Tested Applications: WB, IHC, ELISA	Positive Controls:
Species Specificity: human	WB : U-937 cells, IHC : human skeletal muscle tissue,

Note-IHC: suggested antigen retrieval with **TE buffer pH 9.0; (*)** Alternatively, antigen retrieval may be performed with **citrate buffer pH 6.0**

Background Information

FEM1A, also named as Protein fem-1 homolog A-A, is a 654 amino acid protein, which belongs to the fem-1 family. FEM1A is highly expressed in adult heart and skeletal muscle. FEM1A is a Probable component of an E3 ubiquitin-protein ligase complex, in which it may act as a substrate recognition subunit. FEM1A may participate in antiinflammatory signaling via its interaction with PTGER4. Furthermore, Fem1a expression is down-regulated in rhabdomyosarcoma cells suggesting that the FEM1A gene may be involved in muscle differentiation or be at least a marker of abnormal differentiation in rhabdomyosarcoma. Knowing that a molecular weight of 76 kDa is predicted for human FEM1A, but phosphorylated FEM1A is 95-100 kDa (PMID: 19406122).

Storage

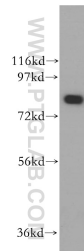
Storage:
Store at -20°C. Stable for one year after shipment.
Storage Buffer:
PBS with 0.02% sodium azide and 50% glycerol pH 7.3.
Aliquoting is unnecessary for -20°C storage

*** 20ul sizes contain 0.1% BSA

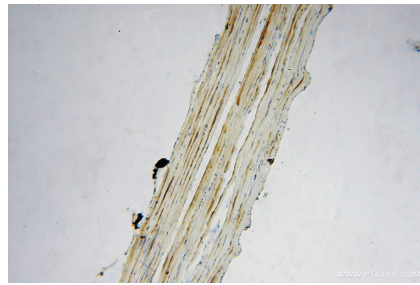
For technical support and original validation data for this product please contact:
T: 1 (888) 4PTGLAB (1-888-478-4522) (toll free in USA), or 1(312) 455-8498 (outside USA)
E: proteintech@ptglab.com
W: ptglab.com

This product is exclusively available under Proteintech Group brand and is not available to purchase from any other manufacturer.

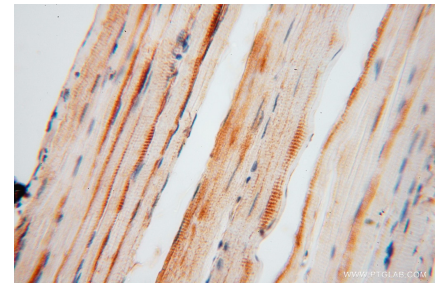
Selected Validation Data



U-937 cells were subjected to SDS PAGE followed by western blot with 15169-1-AP (FEM1A antibody) at dilution of 1:300 incubated at room temperature for 1.5 hours.



Immunohistochemical analysis of paraffin-embedded human skeletal muscle using 15169-1-AP (FEM1A antibody) at dilution of 1:50 (under 10x lens).



Immunohistochemical analysis of paraffin-embedded human skeletal muscle using 15169-1-AP (FEM1A antibody) at dilution of 1:50 (under 40x lens).