

For Research Use Only

# CRAT Polyclonal antibody

Catalog Number: 15170-1-AP

Featured Product

12 Publications



## Basic Information

### Catalog Number:

15170-1-AP

### Size:

150ul, Concentration: 350 ug/ml by Nanodrop;

### Source:

Rabbit

### Isotype:

IgG

### Immunogen Catalog Number:

AG7422

### GenBank Accession Number:

BC000723

### GeneID (NCBI):

1384

### UNIPROT ID:

P43155

### Full Name:

carnitine acetyltransferase

### Calculated MW:

71 kDa

### Observed MW:

62-68 kDa

### Purification Method:

Antigen affinity purification

### Recommended Dilutions:

WB 1:800-1:8000

IP 0.5-4.0 ug for 1.0-3.0 mg of total protein lysate

IHC 1:250-1:1000

## Applications

### Tested Applications:

WB, IHC, IP, ELISA

### Cited Applications:

WB

### Species Specificity:

human, mouse, rat

### Cited Species:

human, mouse, rat, sheep, goat

**Note-IHC: suggested antigen retrieval with TE buffer pH 9.0; (\*) Alternatively, antigen retrieval may be performed with citrate buffer pH 6.0**

### Positive Controls:

**WB**: mouse skeletal muscle tissue, mouse heart tissue, rat skeletal muscle, rat heart tissue

**IP**: mouse skeletal muscle tissue,

**IHC**: mouse brain tissue, mouse liver tissue

## Background Information

CRAT, also named as CAT1, belongs to the carnitine/choline acetyltransferase family. It is specific for short chain fatty acids. CRAT seems to affect the flux through the pyruvate dehydrogenase complex. It may be involved as well in the transport of acetyl-CoA into mitochondria. Carnitine palmitoyltransferase (CPT) deficiencies are common disorders of mitochondrial fatty acid oxidation. The CPT system is made up of two separate proteins located in the outer (CPT1) and inner (CPT2) mitochondrial membranes. CRAT is an active forms for carnitine acetyltransferase. This antibody can bind the close sequences genes.

## Notable Publications

Author	Pubmed ID	Journal	Application
Joongyu D Song	33035493	Cell Metab	WB
Xutong Sun	32554303	Redox Biol	WB
Guoyu Yu	29535221	Cancer Res	

## Storage

### Storage:

Store at -20°C. Stable for one year after shipment.

### Storage Buffer:

PBS with 0.02% sodium azide and 50% glycerol pH 7.3.

Aliquoting is unnecessary for -20°C storage

\*\*\* 20ul sizes contain 0.1% BSA

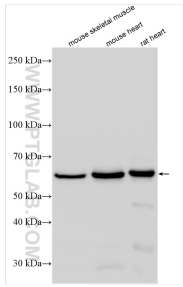
For technical support and original validation data for this product please contact:

T: 1 (888) 4PTGLAB (1-888-478-4522) (toll free in USA), or 1(312) 455-8498 (outside USA)

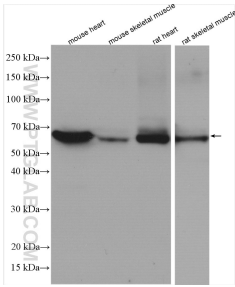
E: [proteintech@ptglab.com](mailto:proteintech@ptglab.com)  
W: [ptglab.com](http://ptglab.com)

This product is exclusively available under Proteintech Group brand and is not available to purchase from any other manufacturer.

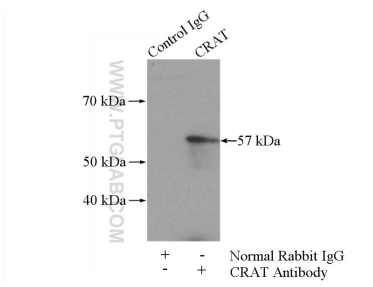
Selected Validation Data



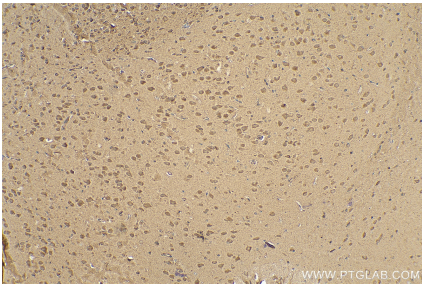
Various lysates were subjected to SDS PAGE followed by western blot with 15170-1-AP (CRAT antibody) at dilution of 1:8000 incubated at room temperature for 1.5 hours.



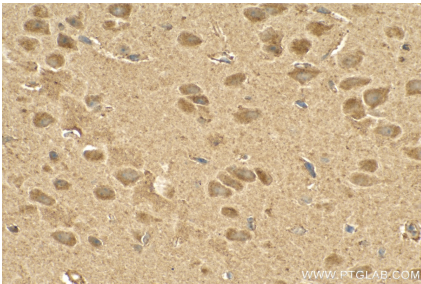
Various lysates were subjected to SDS PAGE followed by western blot with 15170-1-AP (CRAT antibody) at dilution of 1:800 incubated at room temperature for 1.5 hours.



IP result of anti-CRAT (IP:15170-1-AP, 4ug; Detection:15170-1-AP 1:300) with mouse skeletal muscle tissue lysate 3600ug.



Immunohistochemical analysis of paraffin-embedded mouse brain tissue slide using 15170-1-AP (CRAT antibody) at dilution of 1:500 (under 10x lens). Heat mediated antigen retrieval with Tris-EDTA buffer (pH 9.0).



Immunohistochemical analysis of paraffin-embedded mouse brain tissue slide using 15170-1-AP (CRAT antibody) at dilution of 1:500 (under 40x lens). Heat mediated antigen retrieval with Tris-EDTA buffer (pH 9.0).