

PRL3 Polyclonal antibody

Catalog Number: 15186-1-AP

2 Publications

Basic Information

Catalog Number: 15186-1-AP	GenBank Accession Number: BC003105	Purification Method: Antigen affinity purification
Size: 150ul, Concentration: 450 µg/ml by Nanodrop;	GeneID (NCBI): 11156	Recommended Dilutions: WB 1:1000-1:4000 IHC 1:250-1:1000
Source: Rabbit	Full Name: protein tyrosine phosphatase type IVA, member 3	
Isotype: IgG	Calculated MW: 20 kDa	
Immunogen Catalog Number: AG7249	Observed MW: 25 kDa	

Applications

Tested Applications: IHC, WB, ELISA	Positive Controls:
Cited Applications: IF, IHC	WB : mouse heart tissue, rat heart tissue
Species Specificity: human, mouse, rat	IHC : human colon cancer tissue, human oesophagus cancer tissue, human heart tissue
Cited Species: human	
Note-IHC: suggested antigen retrieval with TE buffer pH 9.0; (*) Alternatively, antigen retrieval may be performed with citrate buffer pH 6.0	

Background Information

Phosphatase of regenerating liver-3 (PRL-3; also known as PTP4A3), encodes a 22-kDa protein that represents a novel class of a superfamily of protein tyrosine phosphatases (PTPs) that are ubiquitously expressed in various tumors. PRL3 was associated with primary tumor growth, tumor reoccurrence, and therapy resistance in many human cancers. This protein was also suggested as a marker to predict the relapse of gastric cancer and invasive breast cancer. (PMID: 22469786, PMID: 30157875)

Notable Publications

Author	Pubmed ID	Journal	Application
Shifan Ren	27222233	Reprod Sci	IHC
Jianbiao Zhou	37032358	Mol Cancer	IF

Storage

Storage:
Store at -20°C. Stable for one year after shipment.

Storage Buffer:
PBS with 0.02% sodium azide and 50% glycerol pH 7.3.

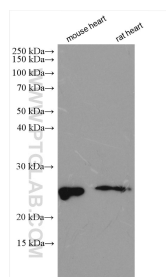
Aliquoting is unnecessary for -20°C storage

*** 20ul sizes contain 0.1% BSA

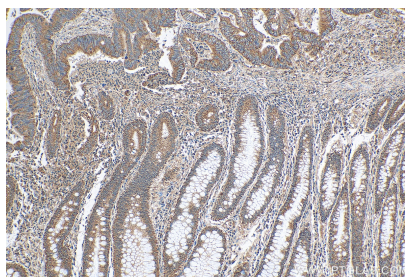
For technical support and original validation data for this product please contact:
 T: 1 (888) 4PTGLAB (1-888-478-4522) (toll free in USA), or 1(312) 455-8498 (outside USA)
 E: proteintech@ptglab.com
 W: ptglab.com

This product is exclusively available under Proteintech Group brand and is not available to purchase from any other manufacturer.

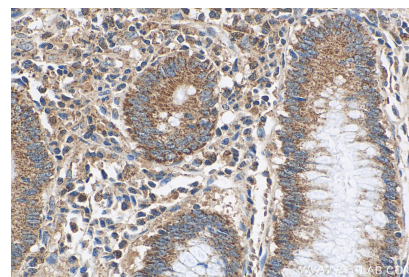
Selected Validation Data



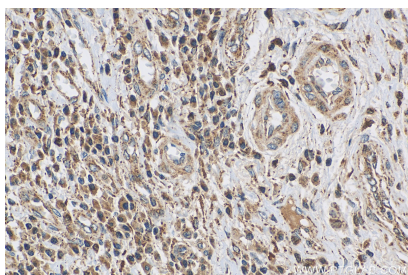
Various lysates were subjected to SDS PAGE followed by western blot with 15186-1-AP (PRL3 antibody) at dilution of 1:2000 incubated at room temperature for 1.5 hours.



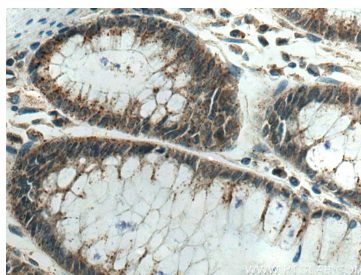
Immunohistochemical analysis of paraffin-embedded human colon cancer tissue slide using 15186-1-AP (PRL3 antibody) at dilution of 1:500 (under 10x lens). Heat mediated antigen retrieval with Tris-EDTA buffer (pH 9.0).



Immunohistochemical analysis of paraffin-embedded human colon cancer tissue slide using 15186-1-AP (PRL3 antibody) at dilution of 1:500 (under 40x lens). Heat mediated antigen retrieval with Tris-EDTA buffer (pH 9.0).



Immunohistochemical analysis of paraffin-embedded human oesophagus cancer tissue slide using 15186-1-AP (PRL3 antibody) at dilution of 1:500 (under 40x lens). Heat mediated antigen retrieval with Tris-EDTA buffer (pH 9.0).



Immunohistochemical analysis of paraffin-embedded human colon cancer tissue slide using 15186-1-AP (PRL3 antibody) at dilution of 1:200 (under 40x lens). Heat mediated antigen retrieval with Tris-EDTA buffer (pH 9.0).