

For Research Use Only

RBPMS Polyclonal antibody

Catalog Number: 15187-1-AP **20 Publications**



Basic Information

Catalog Number: 15187-1-AP	GenBank Accession Number: BC003608	Purification Method: Antigen affinity purification
Size: 150ul , Concentration: 600 µg/ml by Nanodrop;	GeneID (NCBI): 11030	Recommended Dilutions: WB 1:5000-1:50000 IP 0.5-4.0 ug for 1.0-3.0 mg of total protein lysate IHC 1:20-1:200 IF 1:50-1:500
Source: Rabbit	UNIPROT ID: Q93062	
Isotype: IgG	Full Name: RNA binding protein with multiple splicing	
Immunogen Catalog Number: AG7256	Calculated MW: 22 kDa	
	Observed MW: 28-30 kDa	

Applications

Tested Applications:
WB, IP, IF, FC, IHC, ELISA

Cited Applications:
WB, IP, IF, IHC, CoIP

Species Specificity:
human, mouse

Cited Species:
human, rat, mouse

Note-IHC: suggested antigen retrieval with TE buffer pH 9.0; (*) Alternatively, antigen retrieval may be performed with citrate buffer pH 6.0

Positive Controls:

WB: HepG2 cells, mouse kidney tissue, mouse liver tissue, mouse colon tissue, mouse heart tissue

IP: mouse heart tissue,

IHC: human ovary tumor tissue,

IF: HepG2 cells,

Background Information

RBPMS is a member of the RNA recognition motif family of RNA-binding proteins. It has a single, putative RNA recognition motif in its N-terminus.

Notable Publications

Author	Pubmed ID	Journal	Application
Zong-Yi Zhan	36204863	Neural Regen Res	IHC
Pin Lyu	34788628	Cell Rep	IF
Minzhen Li	36423381	Biochem Biophys Res Commun	WB

Storage

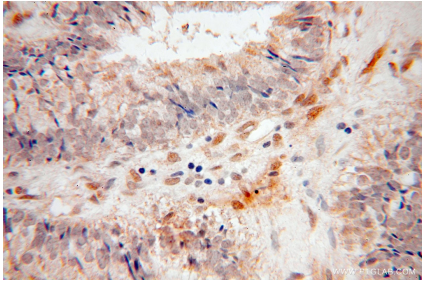
Storage:
Store at -20°C. Stable for one year after shipment.
Storage Buffer:
PBS with 0.02% sodium azide and 50% glycerol pH 7.3.
Aliquoting is unnecessary for -20°C storage

*** 20ul sizes contain 0.1% BSA

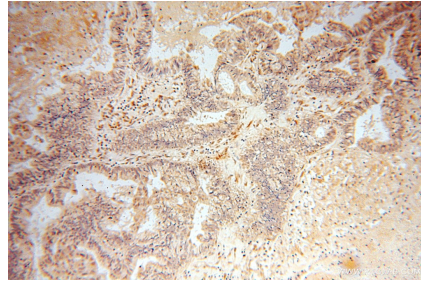
For technical support and original validation data for this product please contact:
T: 1 (888) 4PTGLAB (1-888-478-4522) (toll free in USA), or 1(312) 455-8498 (outside USA)
E: proteintech@ptglab.com
W: ptglab.com

This product is exclusively available under Proteintech Group brand and is not available to purchase from any other manufacturer.

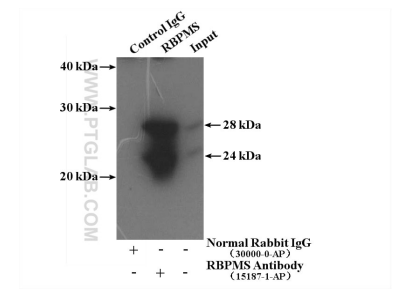
Selected Validation Data



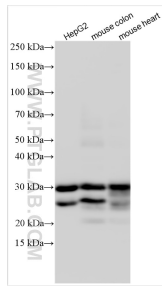
Immunohistochemical analysis of paraffin-embedded human ovary tumor using 15187-1-AP (RBPMS antibody) at dilution of 1:50 (under 40x lens).



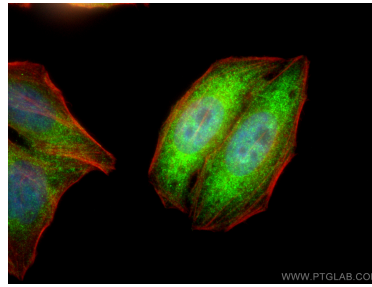
Immunohistochemical analysis of paraffin-embedded human ovary tumor using 15187-1-AP (RBPMS antibody) at dilution of 1:50 (under 10x lens).



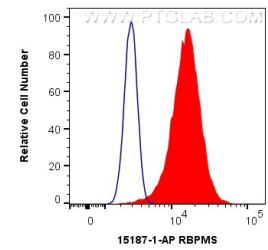
IP result of anti-RBPMS (IP:15187-1-AP, 4ug; Detection:15187-1-AP 1:400) with mouse heart tissue lysate 4000ug.



Various lysates were subjected to SDS PAGE followed by western blot with 15187-1-AP (RBPMS antibody) at dilution of 1:10000 incubated at room temperature for 1.5 hours.



Immunofluorescent analysis of (4% PFA) fixed HepG2 cells using RBPMS antibody (15187-1-AP) at dilution of 1:200 and CoraLite@488-Conjugated AffiniPure Goat Anti-Rabbit IgG(H+L), CL594-phalloidin (red).



1×10^6 HeLa cells were intracellularly stained with 0.4 ug Anti-Human RBPMS (15187-1-AP) (red), or 0.4 ug Isotype Control. Cells were fixed with 4% PFA and permeabilized with Flow Cytometry Perm Buffer (PF00011-C).