

For Research Use Only

GFPT2 Polyclonal antibody

Catalog Number: 15189-1-AP

1 Publications



Basic Information

Catalog Number:

15189-1-AP

Size:

150ul , Concentration: 400 µg/ml by Nanodrop and 233 µg/ml by Bradford method using BSA as the standard;

Source:

Rabbit

Isotype:

IgG

Immunogen Catalog Number:

AG7275

GenBank Accession Number:

BC000012

GeneID (NCBI):

9945

Full Name:

glutamine-fructose-6-phosphate transaminase 2

Calculated MW:

77 kDa

Observed MW:

75-77 kDa

Purification Method:

Antigen affinity purification

Recommended Dilutions:

WB 1:200-1:500

IP 0.5-4.0 ug for IP and 1:200-1:1000 for WB

Applications

Tested Applications:

IP, WB, ELISA

Cited Applications:

WB

Species Specificity:

human

Cited Species:

human

Positive Controls:

WB : HT1080 cells,

IP : HT-1080 cells,

Background Information

Notable Publications

Author	Pubmed ID	Journal	Application
Yuan-Li Ai	37460805	Cell Res	WB

Storage

Storage:

Store at -20°C. Stable for one year after shipment.

Storage Buffer:

PBS with 0.02% sodium azide and 50% glycerol pH 7.3.

Aliquoting is unnecessary for -20°C storage

*** 20ul sizes contain 0.1% BSA

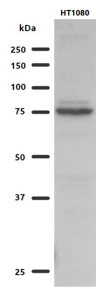
For technical support and original validation data for this product please contact:

T: 1 (888) 4PTGLAB (1-888-478-4522) (toll free in USA), or 1(312) 455-8498 (outside USA)

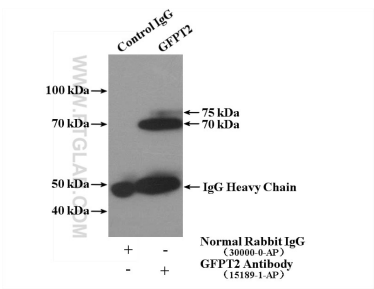
E: proteintech@ptglab.com
W: ptglab.com

This product is exclusively available under Proteintech Group brand and is not available to purchase from any other manufacturer.

Selected Validation Data



WB result of GFPT2 antibody (15189-1-AP) with HT1080 cells.



IP Result of anti-GFPT2 (IP:15189-1-AP, 4ug; Detection:15189-1-AP 1:300) with HT-1080 cells lysate 2400ug.