

For Research Use Only

MRPL37 Polyclonal antibody

Catalog Number: 15190-1-AP **10 Publications**



Basic Information

Catalog Number: 15190-1-AP	GenBank Accession Number: BC000041	Purification Method: Antigen affinity purification
Size: 150ul , Concentration: 373 µg/ml by Nanodrop;	GeneID (NCBI): 51253	Recommended Dilutions: WB 1:500-1:1000 IHC 1:50-1:500
Source: Rabbit	UNIPROT ID: Q9BZE1	
Isotype: IgG	Full Name: mitochondrial ribosomal protein L37	
Immunogen Catalog Number: AG7276	Calculated MW: 48 kDa	
	Observed MW: 48 kDa	

Applications

Tested Applications:
WB, IHC, ELISA

Cited Applications:
WB, IHC

Species Specificity:
human, mouse, rat

Cited Species:
human, mouse

Note-IHC: suggested antigen retrieval with TE buffer pH 9.0; (*) Alternatively, antigen retrieval may be performed with citrate buffer pH 6.0

Positive Controls:

WB : mouse liver tissue, human heart tissue, mouse ovary tissue, mouse uterus tissue

IHC : human lymphoma tissue,

Notable Publications

Author	Pubmed ID	Journal	Application
Christopher B Jackson	30358850	Hum Mol Genet	WB
Nicola Ferreira	31721250	EMBO J	WB
Tara R Richman	34096683	Aging Cell	WB

Storage

Storage:

Store at -20°C. Stable for one year after shipment.

Storage Buffer:

PBS with 0.02% sodium azide and 50% glycerol pH 7.3.

Aliquoting is unnecessary for -20°C storage

***** 20ul sizes contain 0.1% BSA**

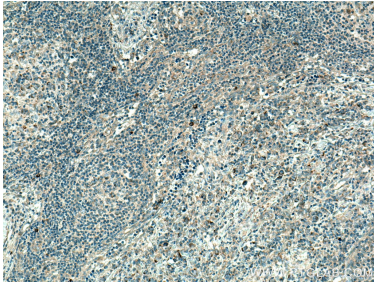
For technical support and original validation data for this product please contact:

T: 1 (888) 4PTGLAB (1-888-478-4522) (toll free in USA), or 1(312) 455-8498 (outside USA)

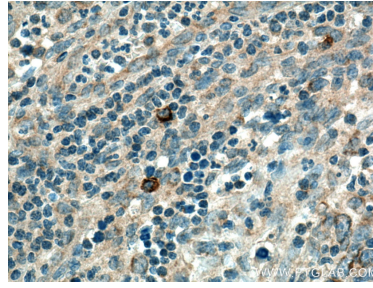
E: proteintech@ptglab.com
W: ptglab.com

This product is exclusively available under Proteintech Group brand and is not available to purchase from any other manufacturer.

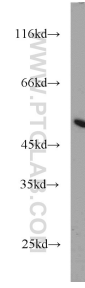
Selected Validation Data



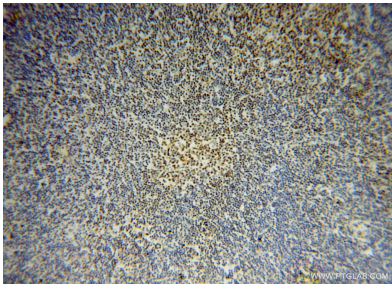
Immunohistochemical analysis of paraffin-embedded human lymphoma tissue slide using 15190-1-AP (MRPL37 antibody) at dilution of 1:200 (under 10x lens). Heat mediated antigen retrieval with Tris-EDTA buffer (pH 9.0).



Immunohistochemical analysis of paraffin-embedded human lymphoma tissue slide using 15190-1-AP (MRPL37 antibody) at dilution of 1:200 (under 40x lens). Heat mediated antigen retrieval with Tris-EDTA buffer (pH 9.0).



mouse liver tissue were subjected to SDS PAGE followed by western blot with 15190-1-AP (MRPL37 antibody) at dilution of 1:1000 incubated at room temperature for 1.5 hours.



Immunohistochemical analysis of paraffin-embedded human lymphoma using 15190-1-AP (MRPL37 antibody) at dilution of 1:50 (under 10x lens).