

For Research Use Only

# TFCP2 Polyclonal antibody

Catalog Number: 15203-1-AP

Featured Product

8 Publications



## Basic Information

### Catalog Number:

15203-1-AP

### Size:

150ul, Concentration: 300 ug/ml by Nanodrop and 267 ug/ml by Bradford method using BSA as the standard;

### Source:

Rabbit

### Isotype:

IgG

### Immunogen Catalog Number:

AG7353

### GenBank Accession Number:

BC003634

### GeneID (NCBI):

7024

### UNIPROT ID:

Q12800

### Full Name:

transcription factor CP2

### Calculated MW:

57 kDa

### Observed MW:

66 kDa

### Purification Method:

Antigen affinity purification

### Recommended Dilutions:

WB 1:500-1:1000

IP 0.5-4.0 ug for 1.0-3.0 mg of total protein lysate

## Applications

### Tested Applications:

WB, IP, ELISA

### Cited Applications:

WB, IHC, IF, IP

### Species Specificity:

human, mouse, rat

### Cited Species:

human, mouse

### Positive Controls:

WB : mouse spleen tissue, rat spleen tissue, rat brain tissue, mouse kidney tissue, K-562 cells

IP : mouse spleen tissue,

## Background Information

TFCP2, also named as SAA3 enhancer factor and transcription factor LSF, is a 502 amino acid protein, which belongs to the grh/CP2 family. TFCP2 is expressed in brain, ovary, kidney, thymus, spleen, liver, adrenal, heart and lung. TFCP2 binds a variety of cellular and viral promoters including fibrinogen, alpha-globin, SV40 and HIV-1 promoters. The calculated molecular weight of TFCP2 is 57 kDa. Similar levels of TFCP2 migrating at 64-66 kDa were evident in all three samples. (PMID: 7828600)

## Notable Publications

Author	Pubmed ID	Journal	Application
Dexiang Zhang	34804919	Front Oncol	WB,IHC
Hongkun Cai	35193647	J Exp Clin Cancer Res	WB,IF
Jiawei Zhou	28182010	Cell Death Dis	WB

## Storage

### Storage:

Store at -20°C. Stable for one year after shipment.

### Storage Buffer:

PBS with 0.02% sodium azide and 50% glycerol pH 7.3.

Aliquoting is unnecessary for -20°C storage

\*\*\* 20ul sizes contain 0.1% BSA

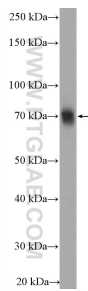
For technical support and original validation data for this product please contact:

T: 1 (888) 4PTGLAB (1-888-478-4522) (toll free in USA), or 1(312) 455-8498 (outside USA)

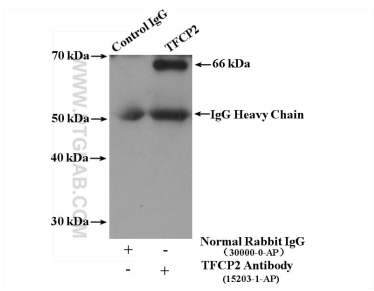
E: [proteintech@ptglab.com](mailto:proteintech@ptglab.com)  
W: [ptglab.com](http://ptglab.com)

This product is exclusively available under Proteintech Group brand and is not available to purchase from any other manufacturer.

Selected Validation Data



mouse spleen tissue were subjected to SDS PAGE followed by western blot with 15203-1-AP (TFCP2 antibody) at dilution of 1:600 incubated at room temperature for 1.5 hours.



IP result of anti-TFCP2 (IP:15203-1-AP, 4ug; Detection:15203-1-AP 1:500) with mouse spleen tissue lysate 4000 ug.