

For Research Use Only

CRACR2A Polyclonal antibody

Catalog Number: 15206-1-AP

Featured Product

5 Publications



Basic Information

Catalog Number: 15206-1-AP	GenBank Accession Number: BC004524	Purification Method: Antigen affinity purification
Size: 150ul, Concentration: 700 µg/ml by Nanodrop and 400 µg/ml by Bradford method using BSA as the standard;	GeneID (NCBI): 84766	Recommended Dilutions: WB 1:500-1:1000 IP 0.5-4.0 ug for IP and 1:500-1:1000 for WB
Source: Rabbit	Full Name: EF-hand calcium binding domain 4B	IHC 1:200-1:800 IF 1:50-1:500
Isotype: IgG	Calculated MW: 46 kDa	
Immunogen Catalog Number: AG7358	Observed MW: 46 kDa, 80-90 kDa	

Applications

Tested Applications: IF, IHC, IP, WB, ELISA	Positive Controls:
Cited Applications: IF, IP, WB	WB: Jurkat cells, HeLa cells, Daudi cells
Species Specificity: human	IP: Jurkat cells,
Cited Species: human, mouse	IHC: human tonsillitis tissue, IF: HEK-293 cells,

Note-IHC: suggested antigen retrieval with TE buffer pH 9.0; (*) Alternatively, antigen retrieval may be performed with citrate buffer pH 6.0

Background Information

CRACR2A (also called CRAC regulator 2A, EFCAB4B) is a cytoplasmic Ca²⁺ sensor predominantly expressed in lymphocytes. It has two isoforms: a long isoform of CRACR2A-a around 80-90 kDa and a short isoform of CRACR2A-c around 46 kDa. CRACR2A-c is involved in the regulation of Ca²⁺-NFAT signaling. CRACR2A-a exists in a GTP- and Golgi membrane-bound form in resting T cells, while it is present in subsynaptic vesicles that translocated from the Golgi region to the immunological synapse after ligation of TCRs. This antibody recognizes both of CRACR2A-c and CRACR2A-a.

Notable Publications

Author	Pubmed ID	Journal	Application
Katarina T Miteva	31092558	J Cell Biol	WB,IF
Jin Seok Woo	29987160	J Immunol	WB
Lucia Pedicini	33603063	Sci Rep	IP,IF,WB

Storage

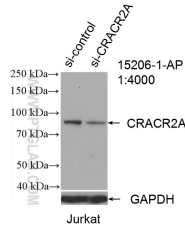
Storage:
Store at -20°C. Stable for one year after shipment.
Storage Buffer:
PBS with 0.02% sodium azide and 50% glycerol pH 7.3.
Aliquoting is unnecessary for -20°C storage

*** 20ul sizes contain 0.1% BSA

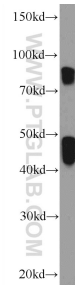
For technical support and original validation data for this product please contact:
T: 1 (888) 4PTGLAB (1-888-478-4522) (toll free in USA), or 1(312) 455-8498 (outside USA) E: proteintech@ptglab.com W: ptglab.com

This product is exclusively available under Proteintech Group brand and is not available to purchase from any other manufacturer.

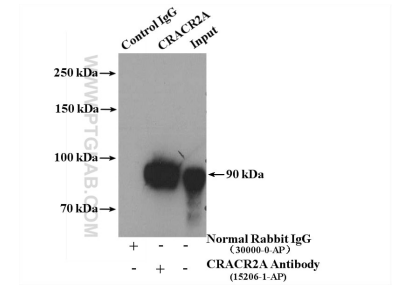
Selected Validation Data



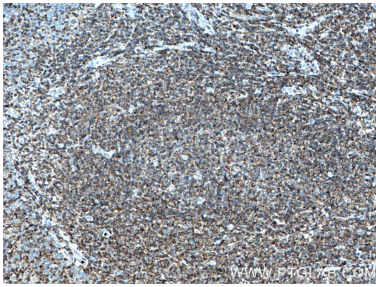
WB result of CRACR2A antibody (15206-1-AP; 1:4000; incubated at room temperature for 1.5 hours) with sh-Control and sh-CRACR2A transfected Jurkat cells.



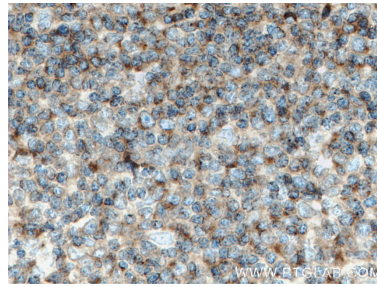
Jurkat cells were subjected to SDS PAGE followed by western blot with 15206-1-AP (CRACR2A antibody at dilution of 1:600 incubated at room temperature for 1.5 hours.



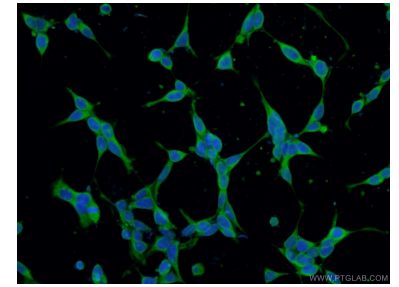
IP Result of anti-CRACR2A (IP:15206-1-AP, 4ug; Detection:15206-1-AP 1:500) with Jurkat cells lysate 3200ug.



Immunohistochemical analysis of paraffin-embedded human tonsillitis tissue slide using 15206-1-AP (CRACR2A antibody) at dilution of 1:400 (under 10x lens. Heat mediated antigen retrieval with Tris-EDTA buffer (pH 9.0).



Immunohistochemical analysis of paraffin-embedded human tonsillitis tissue slide using 15206-1-AP (CRACR2A antibody) at dilution of 1:400 (under 40x lens. Heat mediated antigen retrieval with Tris-EDTA buffer (pH 9.0).



Immunofluorescent analysis of (-20°C Ethanol) fixed HEK-293 cells using 15206-1-AP (CRACR2A antibody) at dilution of 1:50 and Alexa Fluor 488-Conjugated AffiniPure Goat Anti-Rabbit IgG(H+L).