

For Research Use Only

THG1L Polyclonal antibody

Catalog Number: 15208-1-AP **1 Publications**



Basic Information

| | | |
|--|---|--|
| Catalog Number: 15208-1-AP | GenBank Accession Number: BC001852 | Purification Method: Antigen affinity purification |
| Size: 150ul , Concentration: 350 µg/ml by Nanodrop and 213 µg/ml by Bradford method using BSA as the standard; | GeneID (NCBI): 54974 | Recommended Dilutions: WB 1:500-1:1000 IHC 1:20-1:200 |
| Source: Rabbit | Full Name: tRNA-histidine guanylyltransferase 1-like (<i>S. cerevisiae</i>) | |
| Isotype: IgG | Calculated MW: 35 kDa | |
| Immunogen Catalog Number: AG7361 | Observed MW: 30 kDa | |

Applications

| | |
|--|--|
| Tested Applications: IHC, WB, ELISA | Positive Controls: WB : K-562 cells, IHC : human endometrial cancer tissue, |
| Cited Applications: IP, WB | |
| Species Specificity: human, mouse, rat | |
| Cited Species: human | |

Note-IHC: suggested antigen retrieval with TE buffer pH 9.0; (*) Alternatively, antigen retrieval may be performed with citrate buffer pH 6.0

Background Information

Notable Publications

| Author | Pubmed ID | Journal | Application |
|-----------------|-----------|----------------------|-------------|
| Una Bhreathnach | 28115289 | Biochim Biophys Acta | WB,IP |

Storage

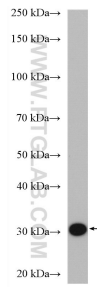
Storage:
Store at -20°C. Stable for one year after shipment.
Storage Buffer:
PBS with 0.02% sodium azide and 50% glycerol pH 7.3.
Aliquoting is unnecessary for -20°C storage

*** 20ul sizes contain 0.1% BSA

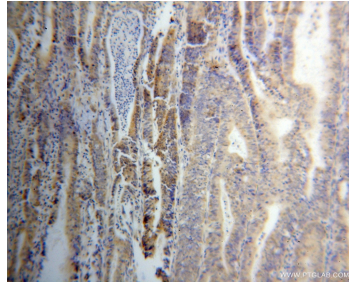
For technical support and original validation data for this product please contact:
T: 1 (888) 4PTGLAB (1-888-478-4522) (toll free in USA), or 1(312) 455-8498 (outside USA) E: proteintech@ptglab.com W: ptglab.com

This product is exclusively available under Proteintech Group brand and is not available to purchase from any other manufacturer.

Selected Validation Data



K-562 cells were subjected to SDS PAGE followed by western blot with 15208-1-AP (THG1L antibody) at dilution of 1:500 incubated at room temperature for 1.5 hours.



Immunohistochemical analysis of paraffin-embedded human endometrial cancer using 15208-1-AP (THG1L antibody) at dilution of 1:100 (under 10x lens).